



# WATERMARK

## CAPE

2,560 Square Feet • 4 Bedrooms • 2.5 Baths • 2-Car Garage



TRADITIONAL



TRANSITIONAL



FLORIDA VERNACULAR

Renderings shown are examples - see sales office for range of finishes and configurations for the homes in this community.

**398 Watermark Drive, Cocoa, FL 32927 • (321) 346-9498**

© 2025 Landsea Homes US Corporation. LANDSEA® and LIVE IN YOUR ELEMENT™ are federally registered trademarks of Landsea. Plans, terms, pricing, square footage, product information, features, promotions, amenities and community/neighborhood information are subject to change without notice or obligation. Square footage is approximate. Floor plans and site map are for representational purposes only, subject to change and not to scale. Renderings are artist's conceptions. Home(s) shown may not represent actual homesite(s) for sale. Model(s) do(es) not display racial preference. Please see the actual purchase agreement for additional information, disclosures and disclaimers relating to your home and its features. Individual energy costs and savings may vary. Landsea Homes does not guarantee any specific level of energy costs or savings. All rights reserved and strictly enforced. This is not an offering where prohibited by law. No information contained herein shall be deemed to constitute a representation or warranty of any kind. Please consult a Landsea Homes sales representative for details. CGC #1507971. This is a co-marketing piece with Landsea Homes. Landsea Mortgage is a division of NFM, Inc. NFM, Inc. - NMLS #2893. NFM, Inc. is an Equal Housing Lender. NFM, Inc. dba Landsea Mortgage has a financial relationship with the homebuilder Landsea Homes and you may choose not to use NFM, Inc. dba Landsea Mortgage as your lender in connection with the purchase of a Landsea home. You are entitled to shop around for the best lender/real estate company for you. This is not a credit decision or a commitment to lend. Landsea Mortgage cannot predict where rates will be in the future. Make sure you understand the features associated with the loan program you choose and that it meets your unique financial needs. For full agency and state licensing information, please visit [www.nfm lending.com/licensing](http://www.nfm lending.com/licensing). NFM, Inc.'s NMLS #2893 ([www.nmlsconsumeraccess.org](http://www.nmlsconsumeraccess.org)). NFM, Inc. is not affiliated with, or an agent or division of, a governmental agency or depository institution. Landsea Mortgage powered by NFM Tempe branch is located at 58 S. River Drive, Suite 330, Tempe, AZ 85288. Branch NMLS #1490627. Branch licensing information: AZ 0121417. NFM, Inc. dba NFM Lending. NFM, Inc. is licensed by AZ #0934973; (dba NFM Consultants, Inc.). Copyright © 2025. 🏠

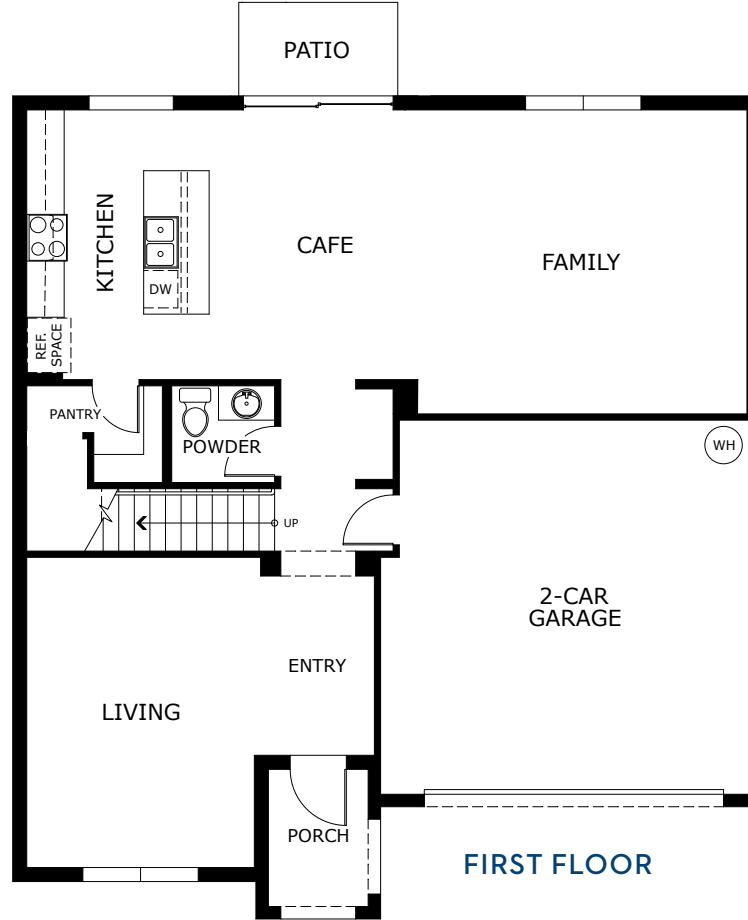
**LANDSEA®**  
**HOMES**  
*Live in your element™*



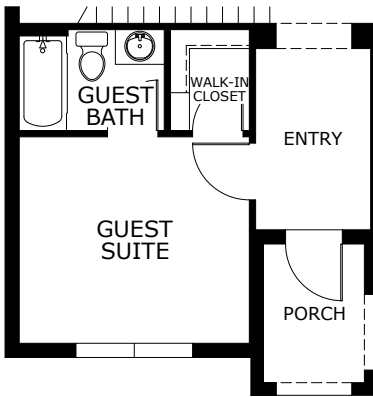
# WATERMARK

## CAPE

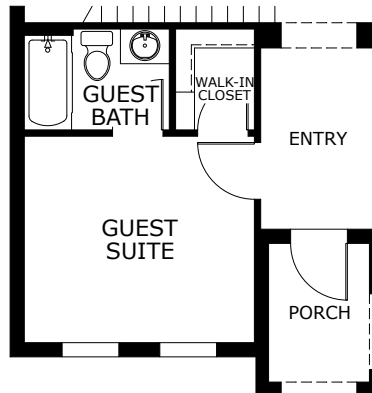
2,560 Square Feet • 4 Bedrooms • 2.5 Baths • 2-Car Garage



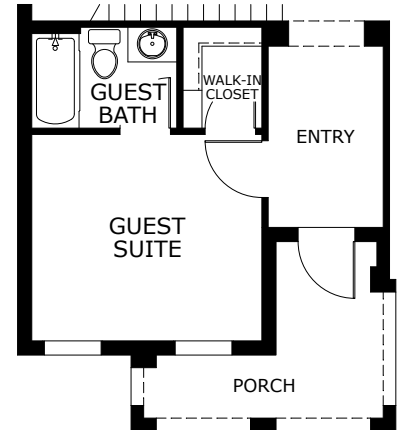
**FIRST FLOOR**



**OPTIONAL  
GUEST SUITE AND FULL BATH  
AT TRADITIONAL**



**OPTIONAL  
GUEST SUITE AND FULL BATH  
AT TRANSITIONAL**



**OPTIONAL  
GUEST SUITE AND FULL BATH  
AT FLORIDA VERNACULAR**

Renderings shown are examples - see sales office for range of finishes and configurations for the homes in this community.

398 Watermark Drive, Cocoa, FL 32927 • (321) 346-9498

© 2025 Landsea Homes US Corporation. LANDSEA® and LIVE IN YOUR ELEMENT™ are federally registered trademarks of Landsea. Plans, terms, pricing, square footage, product information, features, promotions, amenities and community/neighborhood information are subject to change without notice or obligation. Square footage is approximate. Floor plans and site map are for representational purposes only, subject to change and not to scale. Renderings are artist's conceptions. Home(s) shown may not represent actual homesite(s) for sale. Model(s) do(es) not display racial preference. Please see the actual purchase agreement for additional information, disclosures and disclaimers relating to your home and its features. Individual energy costs and savings may vary. Landsea Homes does not guarantee any specific level of energy costs or savings. All rights reserved and strictly enforced. This is not an offering where prohibited by law. No information contained herein shall be deemed to constitute a representation or warranty of any kind. Please consult a Landsea Homes sales representative for details. CGC #1507971. This is a co-marketing piece with Landsea Homes. Landsea Mortgage is a division of NFM, Inc. NFM, Inc. - NMLS #2893. NFM, Inc. is an Equal Housing Lender. NFM, Inc. dba Landsea Mortgage has a financial relationship with the homebuilder Landsea Homes and you may choose not to use NFM, Inc. dba Landsea Mortgage as your lender in connection with the purchase of a Landsea home. You are entitled to shop around for the best lender/real estate company for you. This is not a credit decision or a commitment to lend. Landsea Mortgage cannot predict where rates will be in the future. Make sure you understand the features associated with the loan program you choose and that it meets your unique financial needs. For full agency and state licensing information, please visit [www.nfm lending.com/licensing](http://www.nfm lending.com/licensing). NFM, Inc.'s NMLS #2893 ([www.nmlsconsumeraccess.org](http://www.nmlsconsumeraccess.org)). NFM, Inc. is not affiliated with, or an agent or division of, a governmental agency or depository institution. Landsea Mortgage powered by NFM Tempe branch is located at 58 S. River Drive, Suite 330, Tempe, AZ 85288. Branch NMLS #1490627. Branch licensing information: AZ 0121417. NFM, Inc. dba NFM Lending. NFM, Inc. is licensed by AZ #0934973; (dba NFM Consultants, Inc.). Copyright © 2025. 🏠

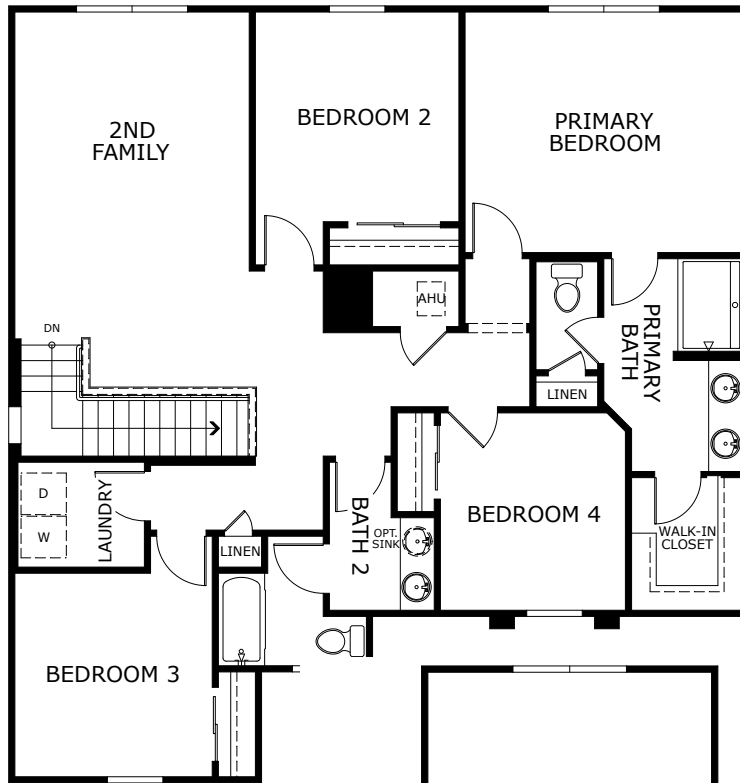
**LANDSEA®  
HOMES**  
*Live in your element™*



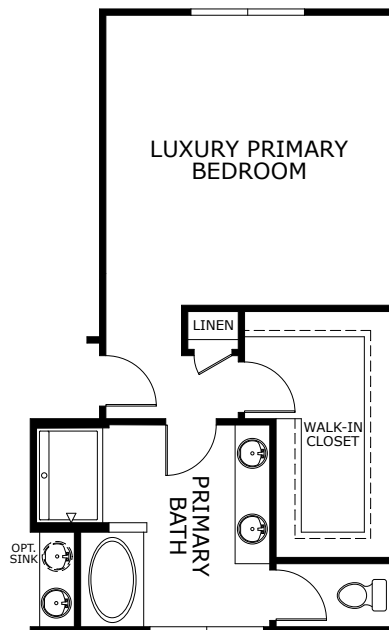
# WATERMARK

## CAPE

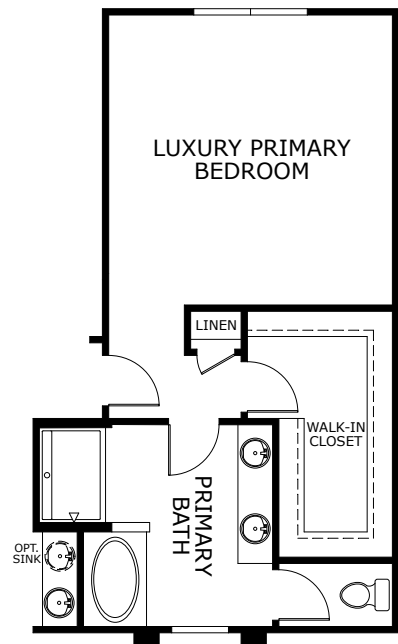
2,560 Square Feet • 4 Bedrooms • 2.5 Baths • 2-Car Garage



SECOND FLOOR



OPTIONAL  
LUXURY PRIMARY SUITE  
AT FLORIDA VERNACULAR



OPTIONAL  
LUXURY PRIMARY SUITE  
AT TRADITIONAL AND  
TRANSITIONAL

Renderings shown are examples - see sales office for range of finishes and configurations for the homes in this community.

398 Watermark Drive, Cocoa, FL 32927 • (321) 346-9498

© 2025 Landsea Homes US Corporation. LANDSEA® and LIVE IN YOUR ELEMENT™ are federally registered trademarks of Landsea. Plans, terms, pricing, square footage, product information, features, promotions, amenities and community/neighborhood information are subject to change without notice or obligation. Square footage is approximate. Floor plans and site map are for representational purposes only, subject to change and not to scale. Renderings are artist's conceptions. Home(s) shown may not represent actual homesite(s) for sale. Model(s) do(es) not display racial preference. Please see the actual purchase agreement for additional information, disclosures and disclaimers relating to your home and its features. Individual energy costs and savings may vary. Landsea Homes does not guarantee any specific level of energy costs or savings. All rights reserved and strictly enforced. This is not an offering where prohibited by law. No information contained herein shall be deemed to constitute a representation or warranty of any kind. Please consult a Landsea Homes sales representative for details. CGC #1507971. This is a co-marketing piece with Landsea Homes. Landsea Mortgage is a division of NFM, Inc. NFM, Inc. - NMLS #2893. NFM, Inc. is an Equal Housing Lender. NFM, Inc. dba Landsea Mortgage has a financial relationship with the homebuilder Landsea Homes and you may choose not to use NFM, Inc. dba Landsea Mortgage as your lender in connection with the purchase of a Landsea home. You are entitled to shop around for the best lender/real estate company for you. This is not a credit decision or a commitment to lend. Landsea Mortgage cannot predict where rates will be in the future. Make sure you understand the features associated with the loan program you choose and that it meets your unique financial needs. For full agency and state licensing information, please visit [www.nfm lending.com/licensing](http://www.nfm lending.com/licensing). NFM, Inc.'s NMLS #2893 ([www.nmlsconsumeraccess.org](http://www.nmlsconsumeraccess.org)). NFM, Inc. is not affiliated with, or an agent or division of, a governmental agency or depository institution. Landsea Mortgage powered by NFM Tempe branch is located at 58 S. River Drive, Suite 330, Tempe, AZ 85288. Branch NMLS #1490627. Branch licensing information: AZ 0121417. NFM, Inc. dba NFM Lending. NFM, Inc. is licensed by AZ #0934973; (dba NFM Consultants, Inc.). Copyright © 2025.

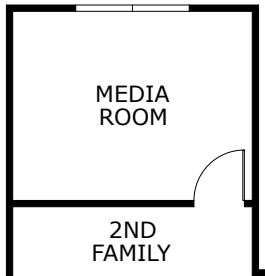
**LANDSEA**  
HOMES  
*Live in your element™*



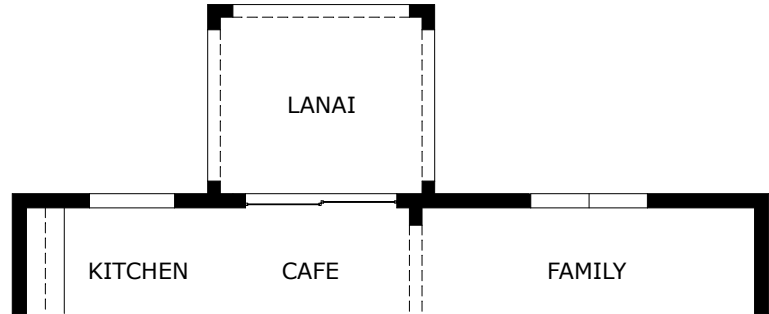
# WATERMARK

## CAPE

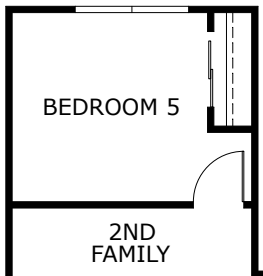
2,560 Square Feet • 4 Bedrooms • 2.5 Baths • 2-Car Garage



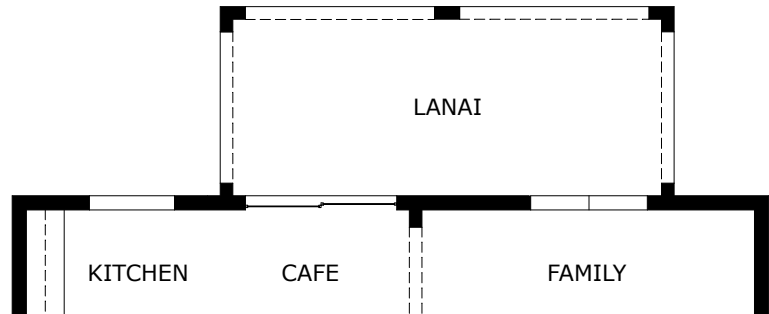
OPTIONAL  
MEDIA ROOM



OPTIONAL  
COVERED LANAI



OPTIONAL  
5TH BEDROOM  
AND 2ND FAMILY



OPTIONAL  
EXTENDED COVERED LANAI

Renderings shown are examples - see sales office for range of finishes and configurations for the homes in this community.

398 Watermark Drive, Cocoa, FL 32927 • (321) 346-9498

© 2025 Landsea Homes US Corporation. LANDSEA® and LIVE IN YOUR ELEMENT™ are federally registered trademarks of Landsea. Plans, terms, pricing, square footage, product information, features, promotions, amenities and community/neighborhood information are subject to change without notice or obligation. Square footage is approximate. Floor plans and site map are for representational purposes only, subject to change and not to scale. Renderings are artist's conceptions. Home(s) shown may not represent actual homesite(s) for sale. Model(s) do(es) not display racial preference. Please see the actual purchase agreement for additional information, disclosures and disclaimers relating to your home and its features. Individual energy costs and savings may vary. Landsea Homes does not guarantee any specific level of energy costs or savings. All rights reserved and strictly enforced. This is not an offering where prohibited by law. No information contained herein shall be deemed to constitute a representation or warranty of any kind. Please consult a Landsea Homes sales representative for details. CGC #1507971. This is a co-marketing piece with Landsea Homes. Landsea Mortgage is a division of NFM, Inc. NFM, Inc. - NMLS #2893. NFM, Inc. is an Equal Housing Lender. NFM, Inc. dba Landsea Mortgage has a financial relationship with the homebuilder Landsea Homes and you may choose not to use NFM, Inc. dba Landsea Mortgage as your lender in connection with the purchase of a Landsea home. You are entitled to shop around for the best lender/real estate company for you. This is not a credit decision or a commitment to lend. Landsea Mortgage cannot predict where rates will be in the future. Make sure you understand the features associated with the loan program you choose and that it meets your unique financial needs. For full agency and state licensing information, please visit [www.nfm lending.com/licensing](http://www.nfm lending.com/licensing). NFM, Inc.'s NMLS #2893 ([www.nmlsconsumeraccess.org](http://www.nmlsconsumeraccess.org)). NFM, Inc. is not affiliated with, or an agent or division of, a governmental agency or depository institution. Landsea Mortgage powered by NFM Tempe branch is located at 58 S. River Drive, Suite 330, Tempe, AZ 85288. Branch NMLS #1490627. Branch licensing information: AZ 0121417. NFM, Inc. dba NFM Lending. NFM, Inc. is licensed by AZ #0934973; (dba NFM Consultants, Inc.). Copyright © 2025. 🏠

**LANDSEA®**  
**HOMES**  
*Live in your element™*