

Massey Meadows

Concept 2796

2,796 Square Feet • 4 Bedrooms • 3 Baths • 2-Car Garage



ELEVATION C - STONE



ELEVATION A - STONE



ELEVATION B - STONE

722 Winecup Way, Midlothian, TX 76065 • (817) 752-4525

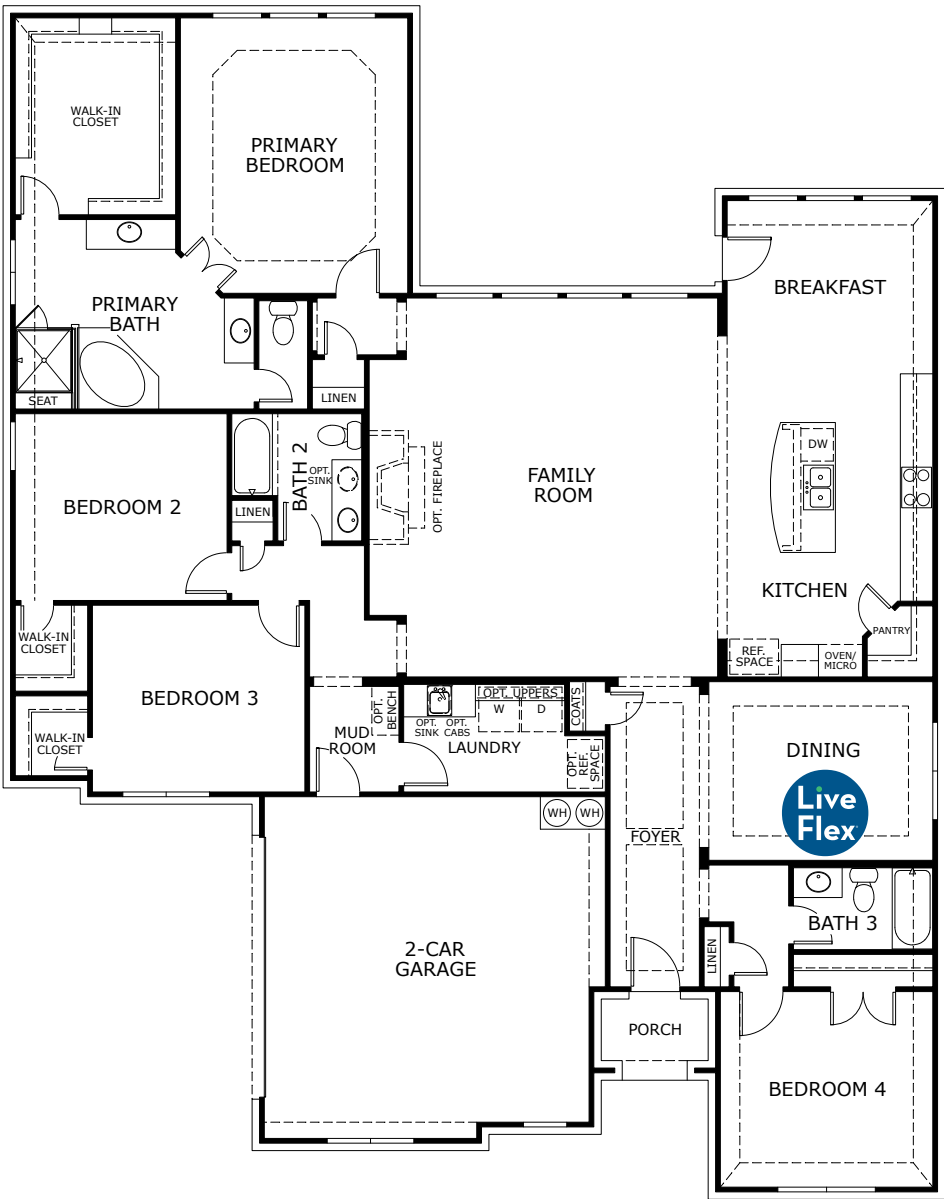
© 2025 Landsea Homes US Corporation. LANDSEA® and LIVE IN YOUR ELEMENT™ are federally registered trademarks of Landsea. Plans, terms, pricing, square footage, product information, features, promotions, amenities and community/neighborhood information are subject to change without notice or obligation. Square footage is approximate. Floor plans, renderings and site maps are for representational purposes only, subject to change and not to scale. Homes shown do not represent actual homesites. Please see the actual purchase agreement for additional information, disclosures and disclaimers relating to your home and its features. Individual energy costs and savings may vary. Landsea Homes does not guarantee any specific level of energy costs or savings. All rights reserved and strictly enforced. This is not an offering where prohibited by law. No information contained herein shall be deemed to constitute a representation or warranty of any kind. Please consult a Landsea Homes sales representative for details. 🏠

LANDSEA®
HOMES
Live in your element™

Massey Meadows

Concept 2796

2,796 Square Feet • 4 Bedrooms • 3 Baths • 2-Car Garage



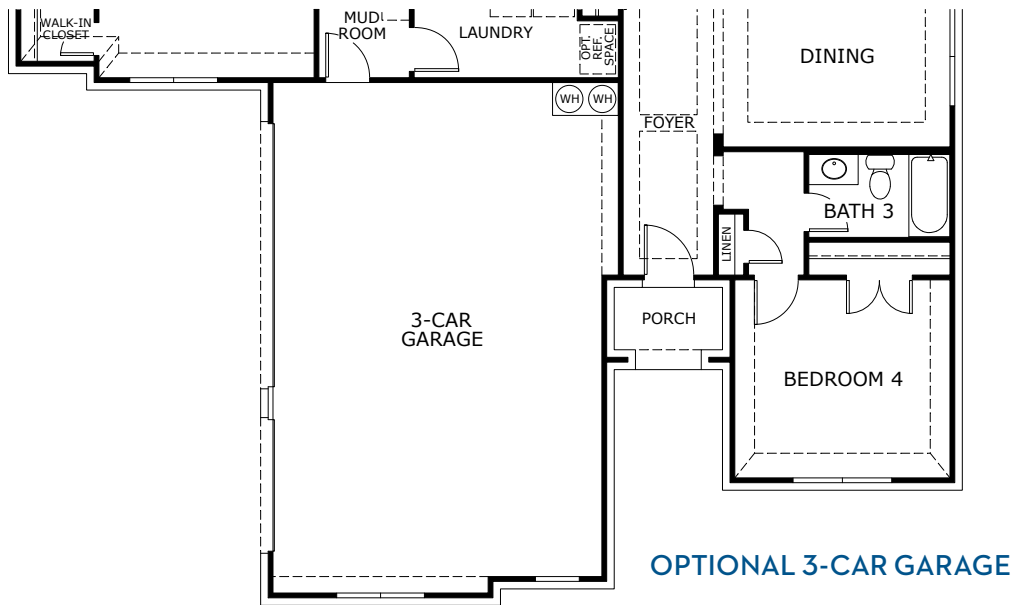
722 Winecup Way, Midlothian, TX 76065 • (817) 752-4525

© 2025 Landsea Homes US Corporation. LANDSEA® and LIVE IN YOUR ELEMENT™ are federally registered trademarks of Landsea. Plans, terms, pricing, square footage, product information, features, promotions, amenities and community/neighborhood information are subject to change without notice or obligation. Square footage is approximate. Floor plans, renderings and site maps are for representational purposes only, subject to change and not to scale. Homes shown do not represent actual homesites. Please see the actual purchase agreement for additional information, disclosures and disclaimers relating to your home and its features. Individual energy costs and savings may vary. Landsea Homes does not guarantee any specific level of energy costs or savings. All rights reserved and strictly enforced. This is not an offering where prohibited by law. No information contained herein shall be deemed to constitute a representation or warranty of any kind. Please consult a Landsea Homes sales representative for details. 🏠

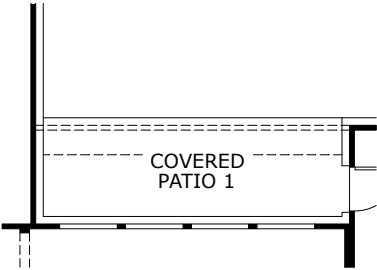
LANDSEA®
HOMES
Live in your element™

Concept 2796

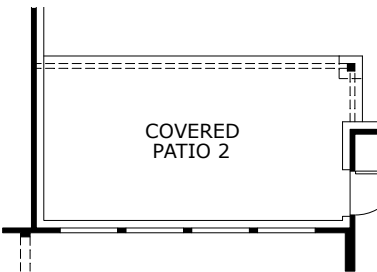
2,796 Square Feet • 4 Bedrooms • 3 Baths • 2-Car Garage



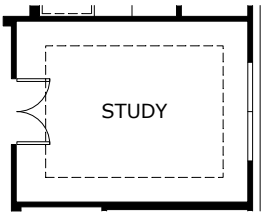
OPTIONAL 3-CAR GARAGE



OPTIONAL
COVERED PATIO 1



OPTIONAL
COVERED PATIO 2



OPTIONAL STUDY
I/O DINING ROOM

722 Winecup Way, Midlothian, TX 76065 • (817) 752-4525

© 2025 Landsea Homes US Corporation. LANDSEA® and LIVE IN YOUR ELEMENT™ are federally registered trademarks of Landsea. Plans, terms, pricing, square footage, product information, features, promotions, amenities and community/neighborhood information are subject to change without notice or obligation. Square footage is approximate. Floor plans, renderings and site maps are for representational purposes only, subject to change and not to scale. Homes shown do not represent actual homesites. Please see the actual purchase agreement for additional information, disclosures and disclaimers relating to your home and its features. Individual energy costs and savings may vary. Landsea Homes does not guarantee any specific level of energy costs or savings. All rights reserved and strictly enforced. This is not an offering where prohibited by law. No information contained herein shall be deemed to constitute a representation or warranty of any kind. Please consult a Landsea Homes sales representative for details. 🏠

LANDSEA®
HOMES
Live in your element™