

Harvest

At CITRUS PARK

MIRABELLA

3,227 – 3,428 Sq. Ft.

5 Bedrooms + Loft + Study

4 Baths

3-Car Split Garage

LiveGen™ Suite Option



SPANISH ELEVATION



FARMHOUSE ELEVATION



DESERT PRAIRIE ELEVATION



MID-CENTURY MODERN ELEVATION

18006 W. Larkspur Drive, Goodyear, AZ 85338 • (623) 748-0219

© 2025 Landsea Homes US Corporation. LANDSEA®, LIVE IN YOUR ELEMENT™ and LIVEFLEX® are federally registered trademarks of Landsea. Bedroom(s) marked with LiveFlex® are eligible for the LiveFlex® optional program for an additional cost. You may select one (1) bedroom marked with LiveFlex® for the program and pick your preferred package of options for that room. Plans, terms, pricing, square footage, product information, features, promotions, LiveFlex® options, amenities and community/neighborhood information are subject to change without notice or obligation. Square footage is approximate. Renderings are artist's conceptions. Homes shown may not reflect actual homesites. Site map is for illustrative purposes only and not to scale. Please see the actual purchase agreement for additional information, disclosures and disclaimers relating to your home, its features and your LiveFlex® options. Individual energy costs and savings may vary. Landsea Homes does not guarantee any specific level of energy costs or savings. All rights reserved and strictly enforced. This is not an offering where prohibited by law. No information contained herein shall be deemed to constitute a representation or warranty of any kind. Please consult a Landsea Homes sales representative for details. Arizona Broker #BR531087000. LIC #C0688244000. ROC #257091. ROC #295355. ROC #324050. ROC #275051.12/23. Landsea Mortgage is a division of NFM, Inc. dba NFM Lending, NFM NMLS #2893. This is a co-marketing piece with Landsea Homes US Corporation ("Seller"). Landsea Mortgage has a financial relationship with Landsea Homes, and you may choose not to use Landsea Mortgage in connection with the purchase of a Landsea Homes Property. You are entitled to shop around for the best lender/real estate company for you. Landsea Mortgage is an equal housing lender. For full agency and state licensing information, please visit www.nfmlending.com/licensing. NFM, Inc.'s NMLS #2893 (www.nmlsconsumeraccess.org). NFM, Inc. is not affiliated with, or an agent or division of, a governmental agency or depository institution. Copyright © 2025

LANDSEA®
HOMES
Live in your element™



3,227 – 3,428 Sq. Ft.

5 Bedrooms + Loft + Study

4 Baths

3-Car Split Garage

LiveGen™ Suite Option

[illegible]

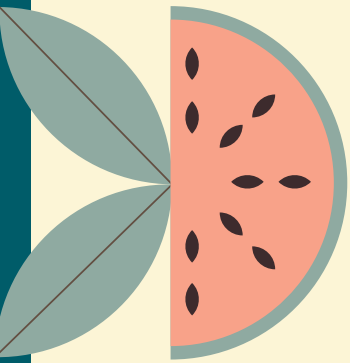
The floor plan for the second level includes the following rooms and features:

- BEDROOM 4**: Located in the top left corner.
- PRIMARY BATH**: Located in the top center, featuring a bathtub and two sinks.
- PRIMARY BEDROOM**: Located in the top right corner.
- BATH 3**: Located in the middle left, featuring a bathtub and two sinks.
- LAUNDRY**: Located in the center, featuring a washer/dryer area and a linen closet.
- WALK-IN CLOSET**: Located in the center, adjacent to the laundry room.
- LOFT**: A large open area in the center, accessible via a staircase labeled "UP" and "DOWN".
- BEDROOM 3**: Located in the bottom left corner.
- BATH 2**: Located in the bottom right, featuring a bathtub and two sinks.
- BEDROOM 2**: Located in the bottom right corner.

18006 W. Larkspur Drive, Goodyear, AZ 85338 • (623) 748-0219

© 2025 Landsea Homes US Corporation. LANDSEA®, LIVE IN YOUR ELEMENT™ and LIVEFLEX® are federally registered trademarks of Landsea. Bedroom(s) marked with LiveFlex® are eligible for the LiveFlex® optional program for an additional cost. You may select one (1) bedroom marked with LiveFlex® for the program and pick your preferred package of options for that room. Plans, terms, pricing, square footage, product information, features, promotions, LiveFlex® options, amenities and community/neighborhood information are subject to change without notice or obligation. Square footage is approximate. Renderings are artist's conceptions. Homes shown may not reflect actual homesites. Site map is for illustrative purposes only and not to scale. Please see the actual purchase agreement for additional information, disclosures and disclaimers relating to your home, its features and your LiveFlex® options. Individual energy costs and savings may vary. Landsea Homes does not guarantee any specific level of energy costs or savings. All rights reserved and strictly enforced. This is not an offering where prohibited by law. No information contained herein shall be deemed to constitute a representation or warranty of any kind. Please consult a Landsea Homes sales representative for details. Arizona Broker #BR531087000. LIC #C0688244000. ROC #257091. ROC #295355. ROC #324050. ROC #275051.12/23. Landsea Mortgage is a division of NFM, Inc. dba NFM Lending, NFM NMLS #2893. This is a co-marketing piece with Landsea Homes US Corporation ("Seller"). Landsea Mortgage has a financial relationship with Landsea Homes, and you may choose not to use Landsea Mortgage in connection with the purchase of a Landsea Homes Property. You are entitled to shop around for the best lender/real estate company for you. Landsea Mortgage is an equal housing lender. For full agency and state licensing information, please visit www.nfmlending.com/licensing. NFM, Inc.'s NMLS #2893 (www.nmlsconsumeraccess.org). NFM, Inc. is not affiliated with, or an agent or division of, a governmental agency or depository institution. Copyright © 2025.

LINDSEA®
HOMES
Live in your element™



Harvest

At CITRUS PARK

MIRABELLA

3,227 – 3,428 Sq. Ft.

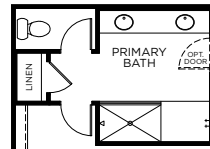
5 Bedrooms + Loft + Study

4 Baths

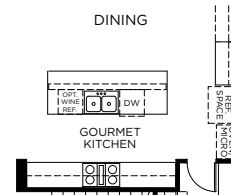
3-Car Split Garage

LiveGen™ Suite Option

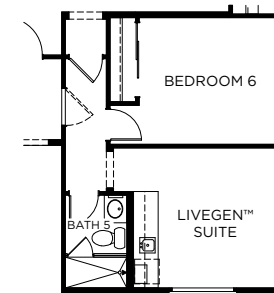
OPTIONAL FEATURES



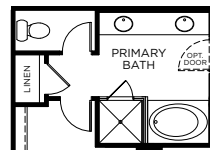
Optional Walk-In Shower
at Primary Bath



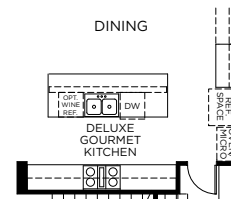
Optional
Gourmet Kitchen



Optional LiveGen™
Suite in Lieu of Study
and 1-Car Garage



Optional Tub and Shower
at Primary Bath



Optional Deluxe
Gourmet Kitchen

18006 W. Larkspur Drive, Goodyear, AZ 85338 • (623) 748-0219

© 2025 Landsea Homes US Corporation. LANDSEA®, LIVE IN YOUR ELEMENT™ and LIVEFLEX® are federally registered trademarks of Landsea. Bedroom(s) marked with LiveFlex® are eligible for the LiveFlex® optional program for an additional cost. You may select one (1) bedroom marked with LiveFlex® for the program and pick your preferred package of options for that room. Plans, terms, pricing, square footage, product information, features, promotions, LiveFlex® options, amenities and community/neighborhood information are subject to change without notice or obligation. Square footage is approximate. Renderings are artist's conceptions. Homes shown may not reflect actual homesites. Site map is for illustrative purposes only and not to scale. Please see the actual purchase agreement for additional information, disclosures and disclaimers relating to your home, its features and your LiveFlex® options. Individual energy costs and savings may vary. Landsea Homes does not guarantee any specific level of energy costs or savings. All rights reserved and strictly enforced. This is not an offering where prohibited by law. No information contained herein shall be deemed to constitute a representation or warranty of any kind. Please consult a Landsea Homes sales representative for details. Arizona Broker #BR531087000. LIC #C0688244000. ROC #257091. ROC #295355. ROC #324050. ROC #275051.12/23. Landsea Mortgage is a division of NFM, Inc. dba NFM Lending, NFM NMLS #2893. This is a co-marketing piece with Landsea Homes US Corporation ("Seller"). Landsea Mortgage has a financial relationship with Landsea Homes, and you may choose not to use Landsea Mortgage in connection with the purchase of a Landsea Homes Property. You are entitled to shop around for the best lender/real estate company for you. Landsea Mortgage is an equal housing lender. For full agency and state licensing information, please visit www.nfmlending.com/licensing. NFM, Inc.'s NMLS #2893 (www.nmlsconsumeraccess.org). NFM, Inc. is not affiliated with, or an agent or division of, a governmental agency or depository institution. Copyright © 2025.

LANDSEA®
HOMES
Live in your element™