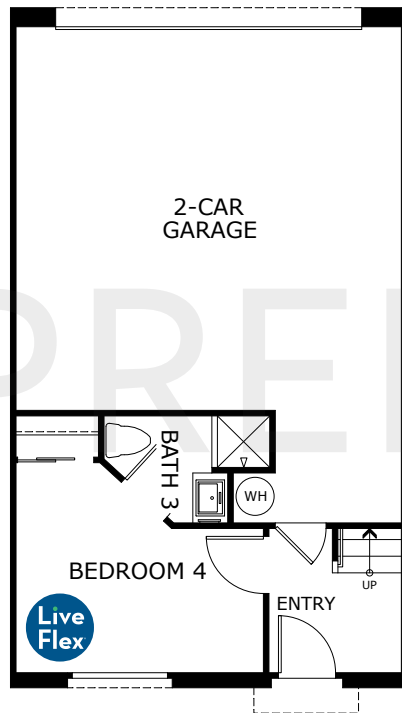


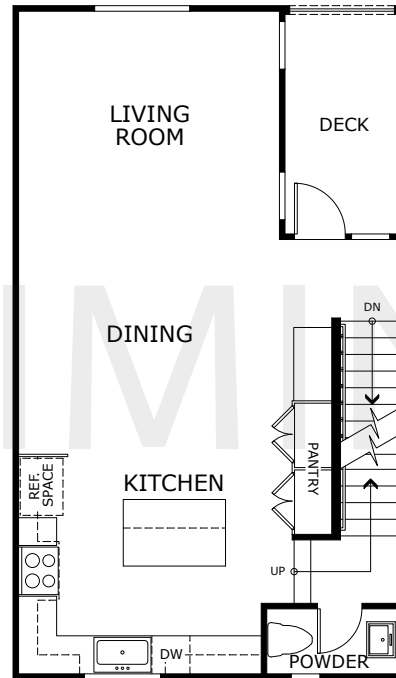


# PLAN 7

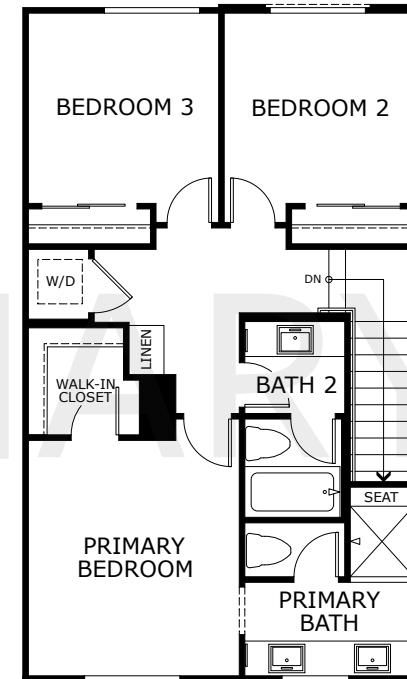
4 Bedrooms / 3.5 Bathrooms  
1,629 Sq. Ft.



FIRST FLOOR



SECOND FLOOR



THIRD FLOOR

Edinger Ave. and Gothard St., Huntington Beach, CA 92647 | [www.landseahomes.com/southern-california/essex/](http://www.landseahomes.com/southern-california/essex/) • [www.landseahomes.com/southern-california/gage/](http://www.landseahomes.com/southern-california/gage/)

© 2025 Landsea Homes US Corporation. LANDSEA®, LIVE IN YOUR ELEMENT™ and LIVEFLEX™ are federally registered trademarks of Landsea. Bedroom(s) marked with LiveFlex™ are eligible for the LiveFlex optional program for an additional cost. You may select one (1) bedroom marked with LiveFlex for the program and pick your preferred package of options for that room. Plans, terms, pricing, square footage, product information, features, promotions, LiveFlex options, amenities and community/neighborhood information are subject to change without notice or obligation. Square footage is approximate. Home(s) shown may not represent actual homesite(s) for sale. Model(s) do(es) not display racial preference. Please see the actual purchase agreement for additional information, disclosures and disclaimers relating to your home, its features and your LiveFlex options. Individual energy costs and savings may vary. Landsea Homes does not guarantee any specific level of energy costs or savings. All rights reserved and strictly enforced. This is not an offering where prohibited by law. No information contained herein shall be deemed to constitute a representation or warranty of any kind. Please consult a Landsea Homes sales representative for details. Landsea Real Estate California, Inc. CA DRE license #02030520. 🏠

