

KODEE

Plan 3550 | Sage Collection

Two-Story

Approx. 2,435 Sq. Ft.

3 Bedrooms + Game Room + Office

2.5 Baths



ELEVATION A



ELEVATION B



ELEVATION C



ELEVATION F




PRELIMINARY

FREEDOM

242 Sycamore Pines Kyle, TX 78640

LANDSEA
HOMES
Live in your element™

© 2024 Landsea Homes US Corporation. LANDSEA®, LIVEFLEX® and LIVE IN YOUR ELEMENT™ are federally registered trademarks of Landsea. Bedroom(s) marked with LiveFlex are eligible for the LiveFlex optional program for an additional cost. You may select one (1) bedroom marked with LiveFlex for the program and pick your preferred package of options for that room. Plans, pricing, product information, features, LiveFlex options, amenities and community/neighborhood information are subject to change without notice or obligation. Photographs, renderings, virtual tours and floor plans are for representational purposes only and may not reflect the exact features or dimensions of your home or LiveFlex options. Square footage is approximate. Models do not display racial preference. Homes shown do not represent actual homesites. LiveFlex program and some features or options shown may not be offered in your community. Please see the actual purchase agreement for additional information, disclosures and disclaimers relating to your home, its features and your LiveFlex options. Individual energy costs and savings may vary. Landsea Homes does not guarantee any specific level of energy costs or savings. All rights reserved and strictly enforced. This is not an offering where prohibited by law. No information contained herein shall be deemed to constitute a representation or warranty of any kind. Please consult a Landsea Homes sales representative for details. 

KODEE

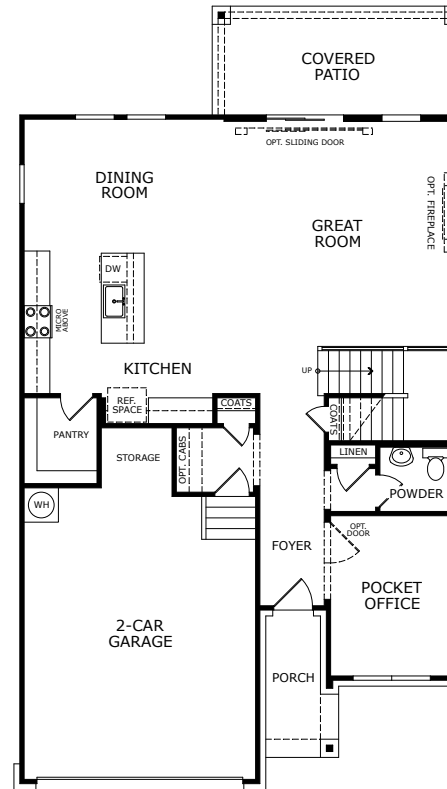
Plan 3550 | Sage Collection

Two-Story

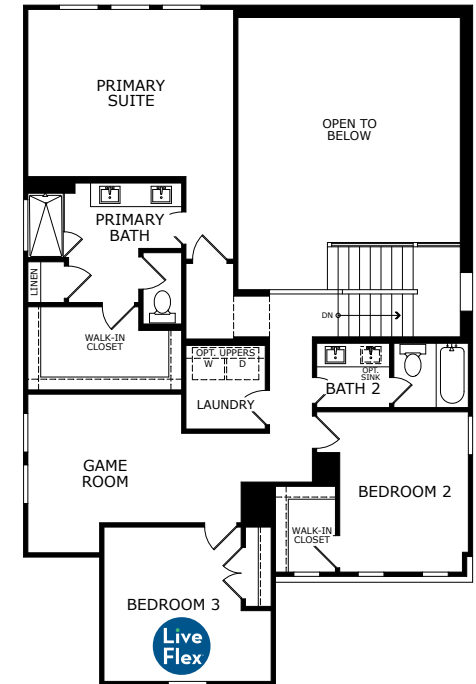
Approx. 2,435 Sq. Ft.

3 Bedrooms + Game Room + Office

2.5 Baths



FIRST FLOOR



SECOND FLOOR

FREEDOM

242 Sycamore Pines Kyle, TX 78640

LANDSEA
HOMES
Live in your element™

© 2024 Landsea Homes US Corporation. LANDSEA®, LIVEFLEX™ and LIVE IN YOUR ELEMENT™ are federally registered trademarks of Landsea. Bedroom(s) marked with LiveFlex are eligible for the LiveFlex optional program for an additional cost. You may select one (1) bedroom marked with LiveFlex for the program and pick your preferred package of options for that room. Plans, pricing, product information, features, LiveFlex options, amenities and community/neighborhood information are subject to change without notice or obligation. Photographs, renderings, virtual tours and floor plans are for representational purposes only and may not reflect the exact features or dimensions of your home or LiveFlex options. Square footage is approximate. Models do not display racial preference. Homes shown do not represent actual homesites. LiveFlex program and some features or options shown may not be offered in your community. Please see the actual purchase agreement for additional information, disclosures and disclaimers relating to your home, its features and your LiveFlex options. Individual energy costs and savings may vary. Landsea Homes does not guarantee any specific level of energy costs or savings. All rights reserved and strictly enforced. This is not an offering where prohibited by law. No information contained herein shall be deemed to constitute a representation or warranty of any kind. Please consult a Landsea Homes sales representative for details.

KODEE

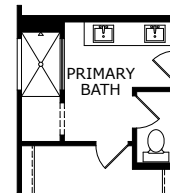
Plan 3550 | Sage Collection

Two-Story

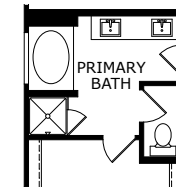
Approx. 2,347 Sq. Ft.

3 Bedrooms + Game Room + Office

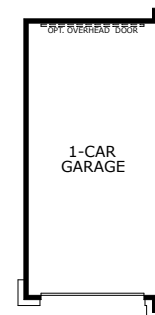
2.5 Baths



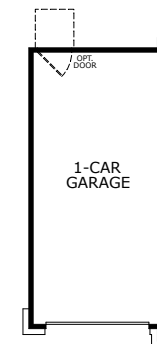
OPTIONAL
WALK IN SHOWER
AT PRIMARY BATH



OPTIONAL
TUB & SHOWER
AT PRIMARY BATH



OPTIONAL
3RD CAR GARAGE W/OPT
OVERHEAD DOOR



OPTIONAL
3RD CAR GARAGE W/OPT
PEDESTRIAN DOOR



OPTIONAL
5' GARAGE EXT.




PRELIMINARY

FREEDOM

242 Sycamore Pines Kyle, TX 78640

LANDSEA
HOMES
Live in your element™

© 2024 Landsea Homes US Corporation. LANDSEA®, LIVEFLEX™ and LIVE IN YOUR ELEMENT™ are federally registered trademarks of Landsea. Bedroom(s) marked with LiveFlex are eligible for the LiveFlex optional program for an additional cost. You may select one (1) bedroom marked with LiveFlex for the program and pick your preferred package of options for that room. Plans, pricing, product information, features, LiveFlex options, amenities and community/neighborhood information are subject to change without notice or obligation. Photographs, renderings, virtual tours and floor plans are for representational purposes only and may not reflect the exact features or dimensions of your home or LiveFlex options. Square footage is approximate. Models do not display racial preference. Homes shown do not represent actual homesites. LiveFlex program and some features or options shown may not be offered in your community. Please see the actual purchase agreement for additional information, disclosures and disclaimers relating to your home, its features and your LiveFlex options. Individual energy costs and savings may vary. Landsea Homes does not guarantee any specific level of energy costs or savings. All rights reserved and strictly enforced. This is not an offering where prohibited by law. No information contained herein shall be deemed to constitute a representation or warranty of any kind. Please consult a Landsea Homes sales representative for details. 

KODEE

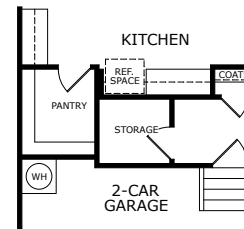
Plan 3550 | Sage Collection

Two-Story

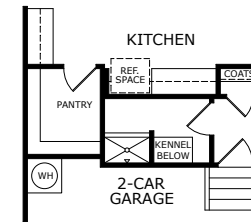
Approx. 2,347 Sq. Ft.

3 Bedrooms + Game Room + Office

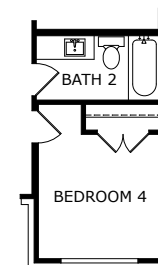
2.5 Baths



OPTIONAL
STORAGE



OPTIONAL
PET WASH



OPTIONAL
BEDROOM 4



OPTIONAL
BEDROOM 5



FREEDOM

242 Sycamore Pines Kyle, TX 78640

LANDSEA
HOMES
Live in your element™

© 2024 Landsea Homes US Corporation. LANDSEA®, LIVEFLEX® and LIVE IN YOUR ELEMENT™ are federally registered trademarks of Landsea. Bedroom(s) marked with LiveFlex are eligible for the LiveFlex optional program for an additional cost. You may select one (1) bedroom marked with LiveFlex for the program and pick your preferred package of options for that room. Plans, pricing, product information, features, LiveFlex options, amenities and community/neighborhood information are subject to change without notice or obligation. Photographs, renderings, virtual tours and floor plans are for representational purposes only and may not reflect the exact features or dimensions of your home or LiveFlex options. Square footage is approximate. Models do not display racial preference. Homes shown do not represent actual homesites. LiveFlex program and some features or options shown may not be offered in your community. Please see the actual purchase agreement for additional information, disclosures and disclaimers relating to your home, its features and your LiveFlex options. Individual energy costs and savings may vary. Landsea Homes does not guarantee any specific level of energy costs or savings. All rights reserved and strictly enforced. This is not an offering where prohibited by law. No information contained herein shall be deemed to constitute a representation or warranty of any kind. Please consult a Landsea Homes sales representative for details.