

St. Johns Preserve

SEAGRASS

Approx. 2,610 Sq. Ft. • 5 Bedrooms + Loft + Office • 3.5 Bathrooms • 2-Car Garage



MODERN EUROPEAN ELEVATION



MODERN FARMHOUSE ELEVATION



TRANSITIONAL ELEVATION



TRADITIONAL ELEVATION



FRENCH COUNTRY ELEVATION

2442 PINWHERRY ST., PALM BAY, FL 32907 • (321) 218-4144

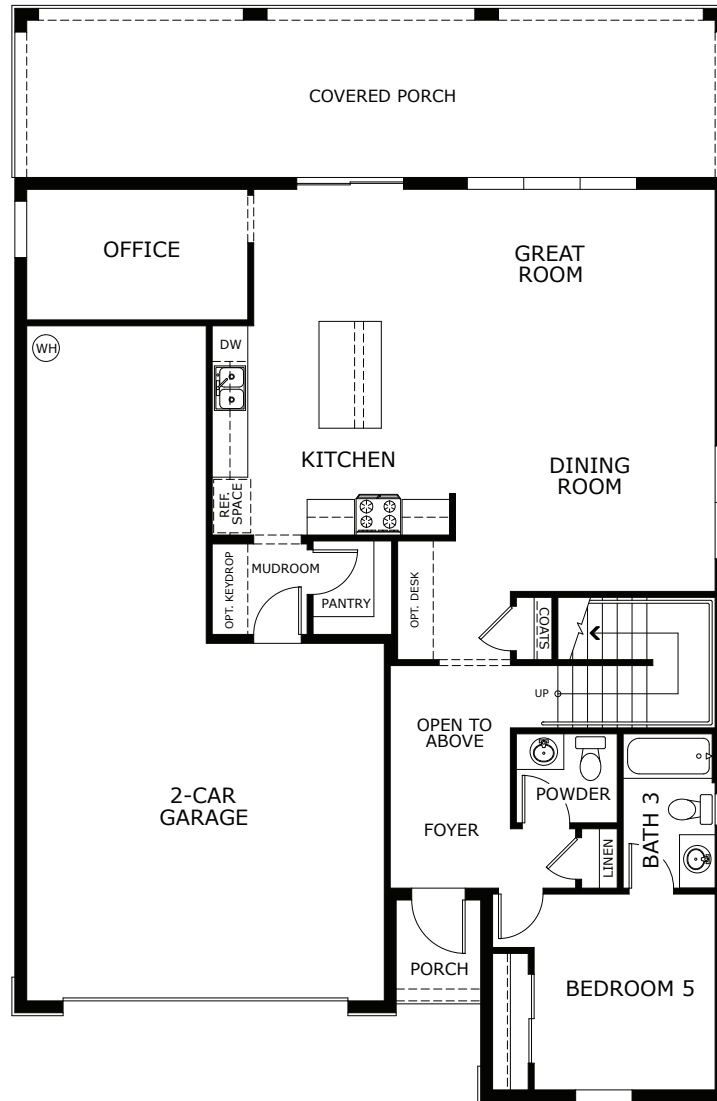
© 2025 Landsea Homes US Corporation. LANDSEA® and LIVE IN YOUR ELEMENT™ are federally registered trademarks of Landsea. Plans, pricing, availability, product information, square footage, amenities and community/neighborhood information are subject to change without notice or obligation. Floor plans are for representational purposes only and may not reflect the exact features or dimensions of your home. Renderings are artist's conceptions. Home(s) shown may not represent actual homesite(s) for sale. Model(s) do(es) not display racial preference. Square footage is approximate. Some features and options shown may not be offered in your community. Please see the signed purchase agreement for additional information, disclosures and disclaimers relating to your home. All rights reserved and strictly enforced. This is not an offering where prohibited by law. No information contained herein shall be deemed to constitute a representation or warranty of any kind. Please consult a Landsea Homes sales representative for details. CGC #1507971. Landsea Mortgage is a division of NFM, Inc. NFM, Inc. - NMLS #2893. NFM, Inc. is an equal housing lender. NFM, Inc. dba Landsea Mortgage has a financial relationship with the homebuilder Landsea Homes, and you may choose not to use NFM, Inc. dba Landsea Mortgage as your lender in connection with the purchase of a Landsea home. You are entitled to shop around for the best lender/real estate company for you. This is not a credit decision or a commitment to lend. Landsea Mortgage cannot predict where rates will be in the future. Make sure you understand the features associated with the loan program you choose and that it meets your unique financial needs. For full agency and state licensing information, please visit www.nfmending.com/licensing. NFM, Inc.'s NMLS #2893 (www.nmlsconsumeraccess.org). NFM, Inc. is not affiliated with, or an agent or division of, a governmental agency or depository institution. Landsea Mortgage powered by NFM Tempe branch is located at 850 West Elliot Road, Suite 101, Tempe, AZ 85284. Branch NMLS #1490627. Branch licensing information: AZ 0121417. NFM, Inc. dba NFM Lending. NFM, Inc. is licensed by AZ #0934973; FL #MLD174 and #MLD795 (dba NFM Consultants, Inc.) Copyright © 2025.

LANDSEA[®]
HOMES
Live in your element™

St. Johns Preserve

SEAGRASS

Approx. 2,610 Sq. Ft. • 5 Bedrooms + Loft + Office • 3.5 Bathrooms • 2-Car Garage



FIRST FLOOR

2442 PINWHERRY ST., PALM BAY, FL 32907 • (321) 218-4144

© 2025 Landsea Homes US Corporation. LANDSEA® and LIVE IN YOUR ELEMENT™ are federally registered trademarks of Landsea. Plans, pricing, availability, product information, square footage, amenities and community/neighborhood information are subject to change without notice or obligation. Floor plans are for representational purposes only and may not reflect the exact features or dimensions of your home. Renderings are artist's conceptions. Home(s) shown may not represent actual homesite(s) for sale. Model(s) do(es) not display racial preference. Square footage is approximate. Some features and options shown may not be offered in your community. Please see the signed purchase agreement for additional information, disclosures and disclaimers relating to your home. All rights reserved and strictly enforced. This is not an offering where prohibited by law. No information contained herein shall be deemed to constitute a representation or warranty of any kind. Please consult a Landsea Homes sales representative for details. CGC #1507971. Landsea Mortgage is a division of NFM, Inc. NFM, Inc. - NMLS #2893. NFM, Inc. is an equal housing lender. NFM, Inc. dba Landsea Mortgage has a financial relationship with the homebuilder Landsea Homes, and you may choose not to use NFM, Inc. dba Landsea Mortgage as your lender in connection with the purchase of a Landsea home. You are entitled to shop around for the best lender/real estate company for you. This is not a credit decision or a commitment to lend. Landsea Mortgage cannot predict where rates will be in the future. Make sure you understand the features associated with the loan program you choose and that it meets your unique financial needs. For full agency and state licensing information, please visit www.nfm lending.com/licensing. NFM, Inc.'s NMLS #2893 (www.nmlsconsumeraccess.org). NFM, Inc. is not affiliated with, or an agent or division of, a governmental agency or depository institution. Landsea Mortgage powered by NFM Tempe branch is located at 850 West Elliot Road, Suite 101, Tempe, AZ 85284. Branch NMLS #1490627. Branch licensing information: AZ 0121417. NFM, Inc. dba NFM Lending. NFM, Inc. is licensed by AZ #0934973; FL #MLD174 and #MLD795 (dba NFM Consultants, Inc.) Copyright © 2025.

LANDSEA[®]
HOMES
Live in your element™

St. Johns Preserve

SEAGRASS

Approx. 2,610 Sq. Ft. • 5 Bedrooms + Loft + Office • 3.5 Bathrooms • 2-Car Garage



SECOND FLOOR

2442 PINWHERRY ST., PALM BAY, FL 32907 • (321) 218-4144

© 2025 Landsea Homes US Corporation. LANDSEA® and LIVE IN YOUR ELEMENT™ are federally registered trademarks of Landsea. Plans, pricing, availability, product information, square footage, amenities and community/neighborhood information are subject to change without notice or obligation. Floor plans are for representational purposes only and may not reflect the exact features or dimensions of your home. Renderings are artist's conceptions. Home(s) shown may not represent actual homesite(s) for sale. Model(s) do(es) not display racial preference. Square footage is approximate. Some features and options shown may not be offered in your community. Please see the signed purchase agreement for additional information, disclosures and disclaimers relating to your home. All rights reserved and strictly enforced. This is not an offering where prohibited by law. No information contained herein shall be deemed to constitute a representation or warranty of any kind. Please consult a Landsea Homes sales representative for details. CGC #1507971. Landsea Mortgage is a division of NFM, Inc. NFM, Inc. - NMLS #2893. NFM, Inc. is an equal housing lender. NFM, Inc. dba Landsea Mortgage has a financial relationship with the homebuilder Landsea Homes, and you may choose not to use NFM, Inc. dba Landsea Mortgage as your lender in connection with the purchase of a Landsea home. You are entitled to shop around for the best lender/real estate company for you. This is not a credit decision or a commitment to lend. Landsea Mortgage cannot predict where rates will be in the future. Make sure you understand the features associated with the loan program you choose and that it meets your unique financial needs. For full agency and state licensing information, please visit www.nfm lending.com/licensing. NFM, Inc.'s NMLS #2893 (www.nmlsconsumeraccess.org). NFM, Inc. is not affiliated with, or an agent or division of, a governmental agency or depository institution. Landsea Mortgage powered by NFM Tempe branch is located at 850 West Elliot Road, Suite 101, Tempe, AZ 85284. Branch NMLS #1490627. Branch licensing information: AZ 0121417. NFM, Inc. dba NFM Lending. NFM, Inc. is licensed by AZ #0934973; FL #MLD174 and #MLD795 (dba NFM Consultants, Inc.) Copyright © 2025.

LANDSEA[®]
HOMES
Live in your element™