

# The Meadows

## Concept 3382

3,382 Square Feet • 4 Bedrooms • 3 Baths • 2-Car Garage



FRONT ELEVATION D W/ STONE

### ELEVATION D - STONE



FRONT ELEVATION A



FRONT ELEVATION B



FRONT ELEVATION C



FRONT ELEVATION D

### ELEVATION A

### ELEVATION B

### ELEVATION C

### ELEVATION D



FRONT ELEVATION A - STONE



FRONT ELEVATION B - STONE



FRONT ELEVATION C - STONE

### ELEVATION A - STONE

### ELEVATION B - STONE

### ELEVATION C - STONE

170 Meadow Lane, Gunter, TX 75058 • (817) 823-7915

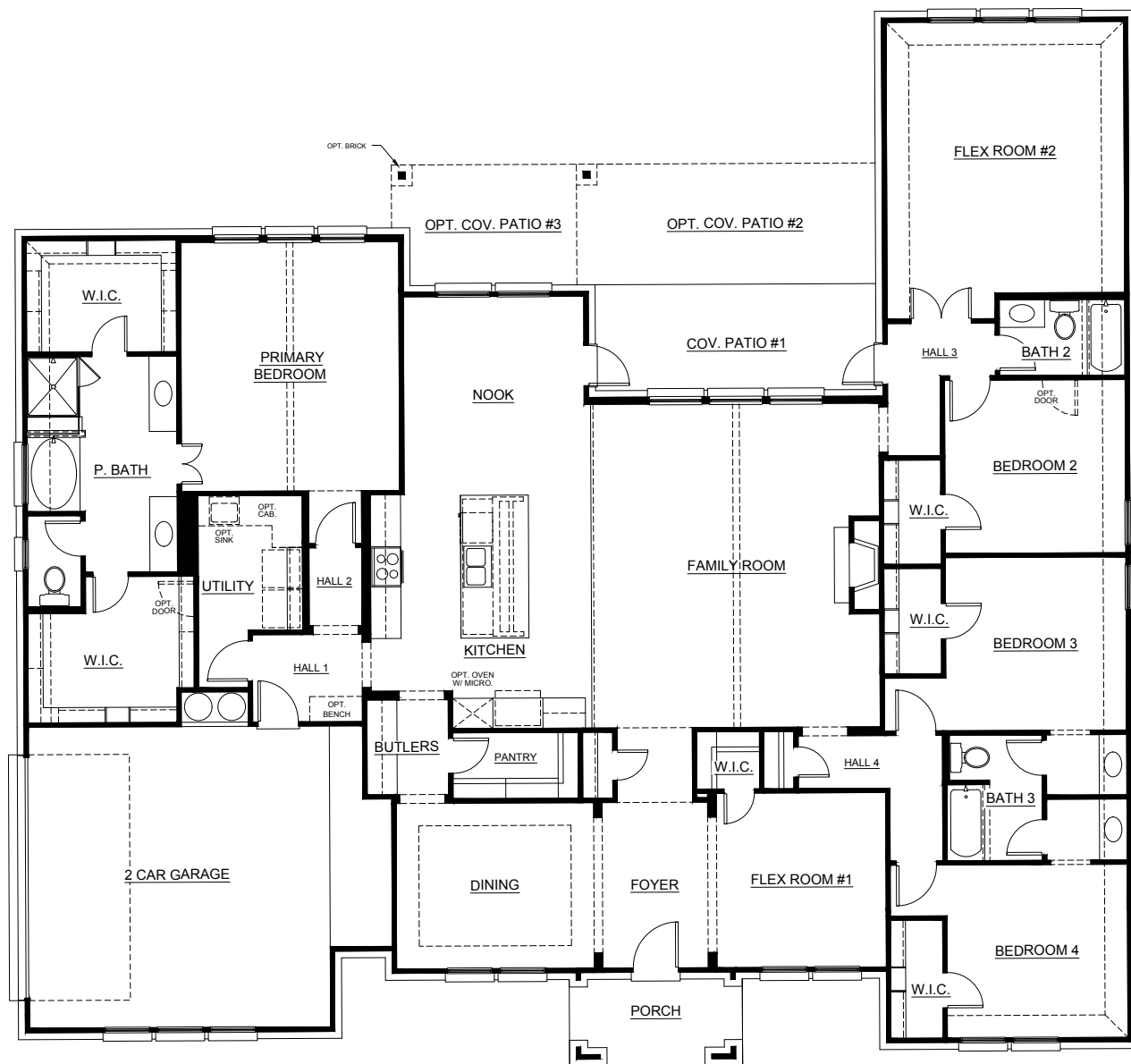
© 2025 Landsea Homes US Corporation. LANDSEA® and LIVE IN YOUR ELEMENT™ are federally registered trademarks of Landsea. Plans, terms, pricing, square footage, product information, features, promotions, amenities and community/neighborhood information are subject to change without notice or obligation. Square footage is approximate. Floor plans, renderings and site maps are for representational purposes only, subject to change and not to scale. Homes shown do not represent actual homesites. Please see the actual purchase agreement for additional information, disclosures and disclaimers relating to your home and its features. Individual energy costs and savings may vary. Landsea Homes does not guarantee any specific level of energy costs or savings. All rights reserved and strictly enforced. This is not an offering where prohibited by law. No information contained herein shall be deemed to constitute a representation or warranty of any kind. Please consult a Landsea Homes sales representative for details. 🏠

**LANDSEA®**  
**HOMES**  
*Live in your element™*

# The Meadows

## Concept 3382

3,382 Square Feet • 4 Bedrooms • 3 Baths • 2-Car Garage



170 Meadow Lane, Gunter, TX 75058 • (817) 823-7915

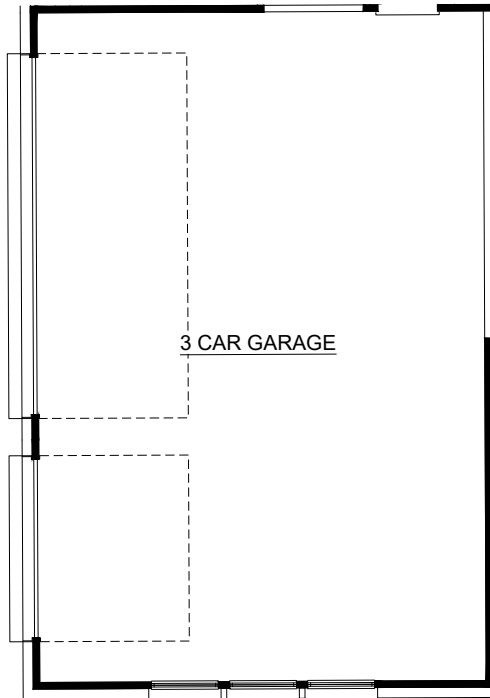
© 2025 Landsea Homes US Corporation. LANDSEA® and LIVE IN YOUR ELEMENT™ are federally registered trademarks of Landsea. Plans, terms, pricing, square footage, product information, features, promotions, amenities and community/neighborhood information are subject to change without notice or obligation. Square footage is approximate. Floor plans, renderings and site maps are for representational purposes only, subject to change and not to scale. Homes shown do not represent actual homesites. Please see the actual purchase agreement for additional information, disclosures and disclaimers relating to your home and its features. Individual energy costs and savings may vary. Landsea Homes does not guarantee any specific level of energy costs or savings. All rights reserved and strictly enforced. This is not an offering where prohibited by law. No information contained herein shall be deemed to constitute a representation or warranty of any kind. Please consult a Landsea Homes sales representative for details. 🏠

**LANDSEA**®  
**HOMES**  
*Live in your element™*

# The Meadows

## Concept 3382

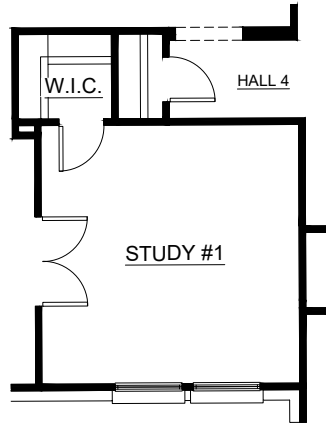
3,382 Square Feet • 4 Bedrooms • 3 Baths • 2-Car Garage



3 CAR GARAGE

FRONT PROFILE AND WINDOWS VARY PER ELEVATION

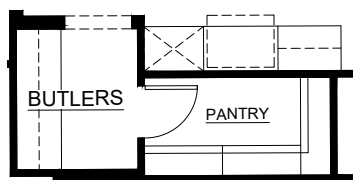
OPTIONAL 3RD CAR GARAGE



STUDY #1

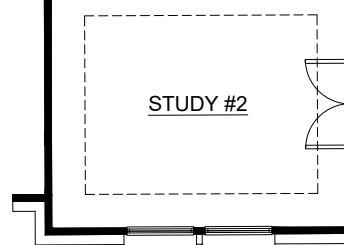
FRONT PROFILE AND WINDOWS VARY PER ELEVATION

OPTIONAL STUDY 1 ILO FLEXROOM 1



BUTLERS

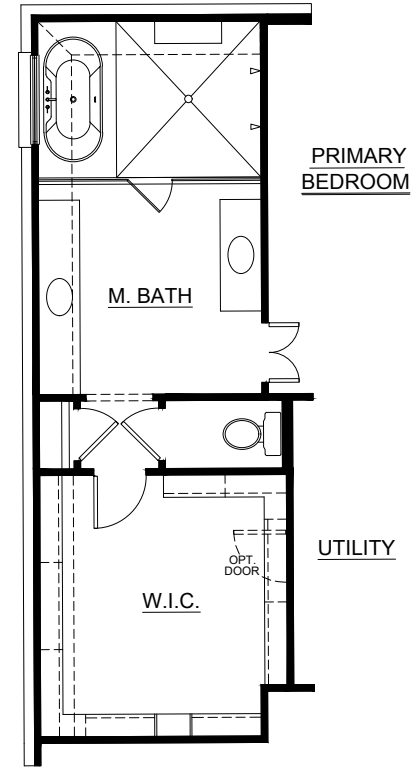
PANTRY



STUDY #2

FRONT PROFILE AND WINDOWS VARY PER ELEVATION

OPTIONAL STUDY 2 ILO DINING



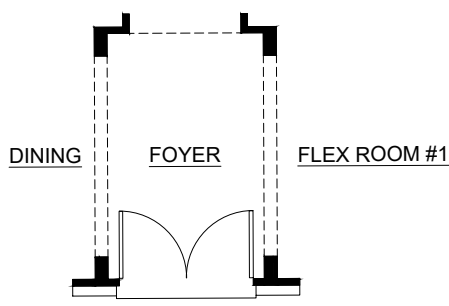
PRIMARY BEDROOM

M. BATH

UTILITY

W.I.C.

OPTIONAL LUXURY BATH

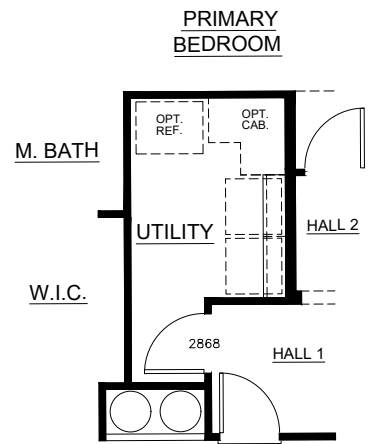


DINING

FOYER

FLEX ROOM #1

OPTIONAL FOYER W/ OPTIONAL DOUBLE DOORS



PRIMARY BEDROOM

M. BATH

UTILITY

HALL 2

W.I.C.

2868

HALL 1

OPTIONAL UTILITY LAYOUT

170 Meadow Lane, Gunter, TX 75058 • (817) 823-7915

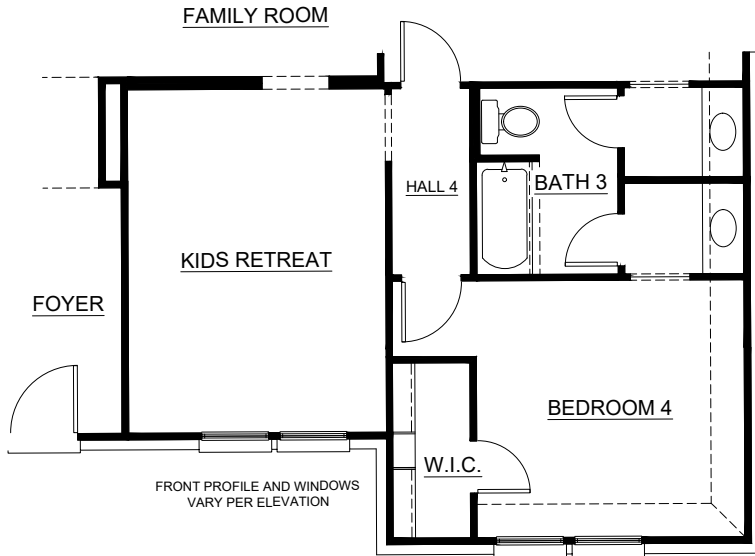
© 2025 Landsea Homes US Corporation. LANDSEA® and LIVE IN YOUR ELEMENT™ are federally registered trademarks of Landsea. Plans, terms, pricing, square footage, product information, features, promotions, amenities and community/neighborhood information are subject to change without notice or obligation. Square footage is approximate. Floor plans, renderings and site maps are for representational purposes only, subject to change and not to scale. Homes shown do not represent actual homesites. Please see the actual purchase agreement for additional information, disclosures and disclaimers relating to your home and its features. Individual energy costs and savings may vary. Landsea Homes does not guarantee any specific level of energy costs or savings. All rights reserved and strictly enforced. This is not an offering where prohibited by law. No information contained herein shall be deemed to constitute a representation or warranty of any kind. Please consult a Landsea Homes sales representative for details. 🏠

**LANDSEA**®  
**HOMES**  
*Live in your element™*

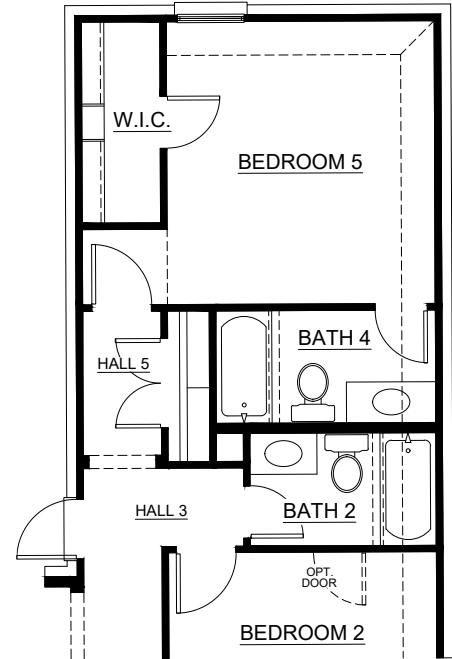
# The Meadows

## Concept 3382

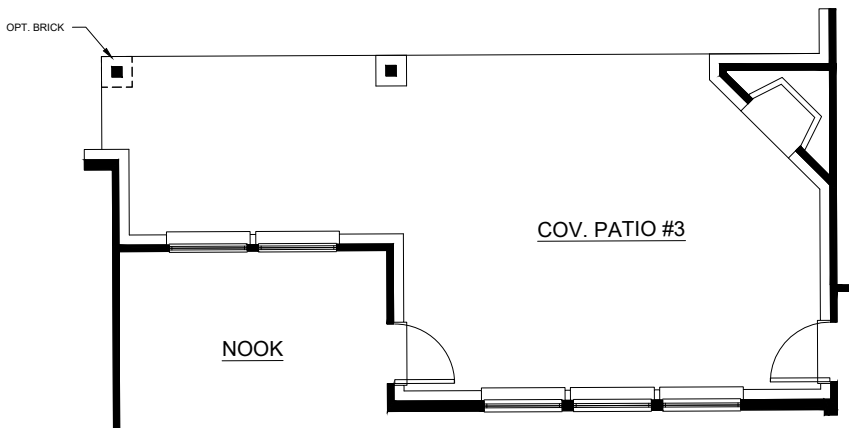
3,382 Square Feet • 4 Bedrooms • 3 Baths • 2-Car Garage



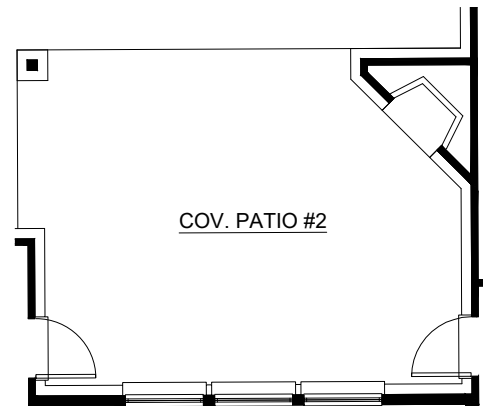
OPTIONAL KIDS RETREAT  
ILO FLEX ROOM 1



OPTIONAL BEDROOM 5 AND  
BATH 4 ILO FLEX ROOM 2



OPTIONAL COVERED PATIO 3  
W/ OPTIONAL OUTDOOR  
FIREPLACE



OPTIONAL COVERED PATIO 2  
W/ OPTIONAL OUTDOOR  
FIREPLACE

170 Meadow Lane, Gunter, TX 75058 • (817) 823-7915

© 2025 Landsea Homes US Corporation. LANDSEA® and LIVE IN YOUR ELEMENT™ are federally registered trademarks of Landsea. Plans, terms, pricing, square footage, product information, features, promotions, amenities and community/neighborhood information are subject to change without notice or obligation. Square footage is approximate. Floor plans, renderings and site maps are for representational purposes only, subject to change and not to scale. Homes shown do not represent actual homesites. Please see the actual purchase agreement for additional information, disclosures and disclaimers relating to your home and its features. Individual energy costs and savings may vary. Landsea Homes does not guarantee any specific level of energy costs or savings. All rights reserved and strictly enforced. This is not an offering where prohibited by law. No information contained herein shall be deemed to constitute a representation or warranty of any kind. Please consult a Landsea Homes sales representative for details. 🏠

**LANDSEA**®  
**HOMES**  
*Live in your element™*