

# Coyote Crossing

## Concept 2027

2,069 Square Feet • 3 Bedrooms • 2 Baths • 2-Car Garage



ELEVATION D - STONE



ELEVATION A



ELEVATION B



ELEVATION C



ELEVATION A - STONE



ELEVATION B - STONE



ELEVATION C - STONE

12529 Yellowstone Street, Godley, TX 76044 • (817) 438-2772

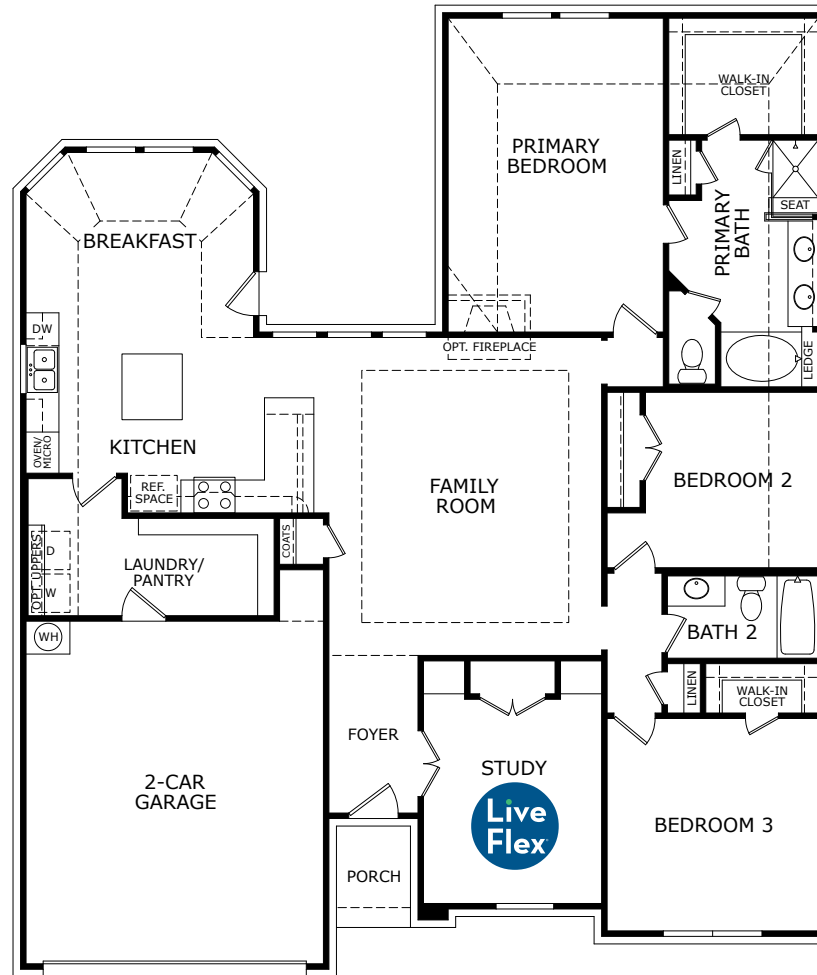
© 2025 Landsea Homes US Corporation. LANDSEA® and LIVE IN YOUR ELEMENT™ are federally registered trademarks of Landsea. Plans, terms, pricing, square footage, product information, features, promotions, amenities and community/neighborhood information are subject to change without notice or obligation. Square footage is approximate. Floor plans, renderings and site maps are for representational purposes only, subject to change and not to scale. Homes shown do not represent actual homesites. Please see the actual purchase agreement for additional information, disclosures and disclaimers relating to your home and its features. Individual energy costs and savings may vary. Landsea Homes does not guarantee any specific level of energy costs or savings. All rights reserved and strictly enforced. This is not an offering where prohibited by law. No information contained herein shall be deemed to constitute a representation or warranty of any kind. Please consult a Landsea Homes sales representative for details. 🏠

**LANDSEA**®  
**HOMES**  
*Live in your element™*

# Coyote Crossing

## Concept 2027

2,069 Square Feet • 3 Bedrooms • 2 Baths • 2-Car Garage



12529 Yellowstone Street, Godley, TX 76044 • (817) 438-2772

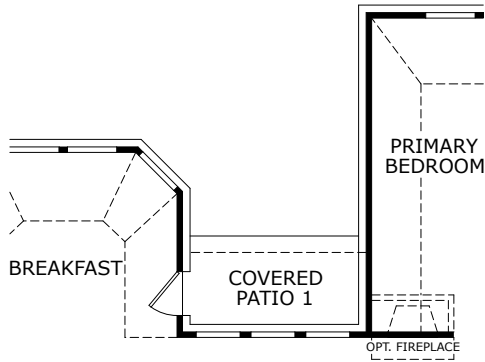
© 2025 Landsea Homes US Corporation. LANDSEA® and LIVE IN YOUR ELEMENT™ are federally registered trademarks of Landsea. Plans, terms, pricing, square footage, product information, features, promotions, amenities and community/neighborhood information are subject to change without notice or obligation. Square footage is approximate. Floor plans, renderings and site maps are for representational purposes only, subject to change and not to scale. Homes shown do not represent actual homesites. Please see the actual purchase agreement for additional information, disclosures and disclaimers relating to your home and its features. Individual energy costs and savings may vary. Landsea Homes does not guarantee any specific level of energy costs or savings. All rights reserved and strictly enforced. This is not an offering where prohibited by law. No information contained herein shall be deemed to constitute a representation or warranty of any kind. Please consult a Landsea Homes sales representative for details. 🏠

**LANDSEA**<sup>®</sup>  
**HOMES**  
*Live in your element™*

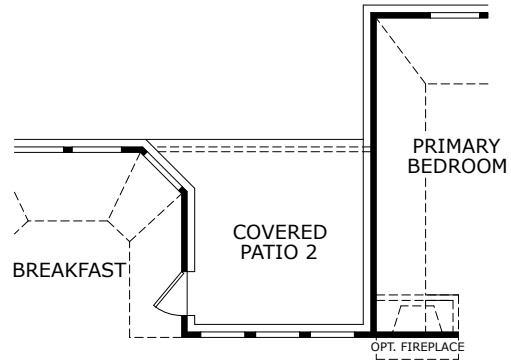
# Coyote Crossing

## Concept 2027

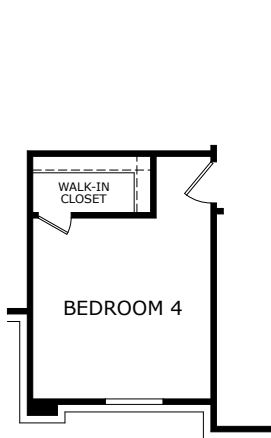
2,069 Square Feet • 3 Bedrooms • 2 Baths • 2-Car Garage



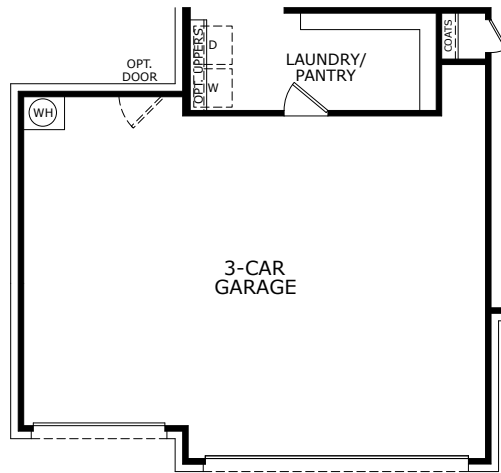
OPTIONAL  
COVERED PATIO 1



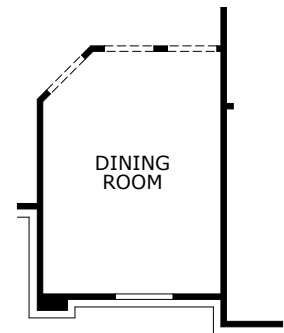
OPTIONAL  
COVERED PATIO 2



OPTIONAL  
BEDROOM 4 ILO STUDY



OPTIONAL  
3-CAR GARAGE



OPTIONAL  
DINING ILO STUDY

12529 Yellowstone Street, Godley, TX 76044 • (817) 438-2772

© 2025 Landsea Homes US Corporation. LANDSEA® and LIVE IN YOUR ELEMENT™ are federally registered trademarks of Landsea. Plans, terms, pricing, square footage, product information, features, promotions, amenities and community/neighborhood information are subject to change without notice or obligation. Square footage is approximate. Floor plans, renderings and site maps are for representational purposes only, subject to change and not to scale. Homes shown do not represent actual homesites. Please see the actual purchase agreement for additional information, disclosures and disclaimers relating to your home and its features. Individual energy costs and savings may vary. Landsea Homes does not guarantee any specific level of energy costs or savings. All rights reserved and strictly enforced. This is not an offering where prohibited by law. No information contained herein shall be deemed to constitute a representation or warranty of any kind. Please consult a Landsea Homes sales representative for details. 🏠

**LANDSEA**  
HOMES  
*Live in your element™*