



TRADITIONAL




TRANSITIONAL

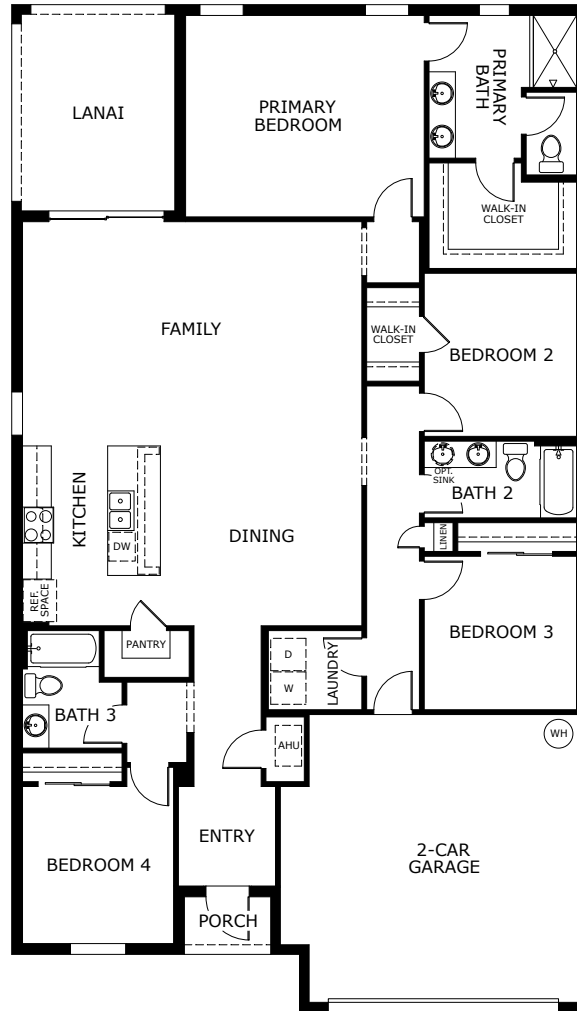


FLORIDA VERNACULAR

Renderings shown are examples - see sales office for range of finishes and configurations for the homes in this community.

314 Marion Loop, Haines City, FL 33844 • (407) 974-5214

© 2025 Landsea Homes US Corporation. LANDSEA® and LIVE IN YOUR ELEMENT™ are federally registered trademarks of Landsea. Plans, terms, pricing, square footage, product information, features, promotions, amenities and community/neighborhood information are subject to change without notice or obligation. Square footage is approximate. Floor plans and site map are for representational purposes only, subject to change and not to scale. Model does not display racial preference. Renderings do not reflect actual homesites. Please see the actual purchase agreement for additional information, disclosures and disclaimers relating to your home and its features. Individual energy costs and savings may vary. Landsea Homes does not guarantee any specific level of energy costs or savings. All rights reserved and strictly enforced. This is not an offering where prohibited by law. No information contained herein shall be deemed to constitute a representation or warranty of any kind. Please consult a Landsea Homes sales representative for details. CGC #1507971. This is a co-marketing piece with Landsea Homes. Landsea Mortgage is a Division of NFM, Inc. NFM, Inc. - NMLS #2893. NFM, Inc. is an Equal Housing Lender. NFM, Inc. dba Landsea Mortgage, has a financial relationship with the home builder Landsea Homes and you may choose not to use NFM Inc, dba Landsea Mortgage as your lender in connection with the purchase of a Landsea Home. You are entitled to shop around for the best lender/real estate company for you. This is not a credit decision or a commitment to lend. Landsea Mortgage cannot predict where rates will be in the future. Make sure you understand the features associated with the loan program you choose and that it meets your unique financial needs. For full agency and state licensing information, please visit www.nfm lending.com/licensing. NFM, Inc.'s NMLS #2893 (www.nmlsconsumeraccess.org). NFM, Inc. is not affiliated with, or an agent or division of, a governmental agency or depository institution. Landsea Mortgage powered by NFM Tempe branch is located at 58 S River Drive, Suite 330, Tempe, AZ 85288. Branch NMLS #1490627. Branch licensing information: AZ 0121417. NFM, Inc. d/b/a NFM Lending. NFM, Inc. is licensed by AZ #0934973; FL # MLD174 and MLD795. Copyright © 2024 NFM, Inc. dba NFM Lending. America's Common Sense Lender™ Trade/service marks are the property of NFM, Inc. and/or its subsidiaries. Licensed by the Department of Financial Protection and Innovation under the California Residential Mortgage Lending Act. Copyright © 2025. 



FIRST FLOOR

314 Marion Loop, Haines City, FL 33844 • (407) 974-5214

© 2025 Landsea Homes US Corporation. LANDSEA® and LIVE IN YOUR ELEMENT™ are federally registered trademarks of Landsea. Plans, terms, pricing, square footage, product information, features, promotions, amenities and community/neighborhood information are subject to change without notice or obligation. Square footage is approximate. Floor plans and site map are for representational purposes only, subject to change and not to scale. Model does not display racial preference. Renderings do not reflect actual homesites. Please see the actual purchase agreement for additional information, disclosures and disclaimers relating to your home and its features. Individual energy costs and savings may vary. Landsea Homes does not guarantee any specific level of energy costs or savings. All rights reserved and strictly enforced. This is not an offering where prohibited by law. No information contained herein shall be deemed to constitute a representation or warranty of any kind. Please consult a Landsea Homes sales representative for details. CGC #1507971. This is a co-marketing piece with Landsea Homes. Landsea Mortgage is a Division of NFM, Inc. NFM, Inc. -NMLS #2893. NFM, Inc. is an Equal Housing Lender. NFM, Inc. dba Landsea Mortgage, has a financial relationship with the home builder Landsea Homes and you may choose not to use NFM Inc, dba Landsea Mortgage as your lender in connection with the purchase of a Landsea Home. You are entitled to shop around for the best lender/real estate company for you. This is not a credit decision or a commitment to lend. Landsea Mortgage cannot predict where rates will be in the future. Make sure you understand the features associated with the loan program you choose and that it meets your unique financial needs. For full agency and state licensing information, please visit www.nfm lending.com/licensing. NFM, Inc.'s NMLS #2893 (www.nmlsconsumeraccess.org). NFM, Inc. is not affiliated with, or an agent or division of, a governmental agency or depository institution. Landsea Mortgage powered by NFM Tempe branch is located at 58 S River Drive, Suite 330, Tempe, AZ 85288. Branch NMLS #1490627. Branch licensing information: AZ 0121417. NFM, Inc. d/b/a NFM Lending. NFM, Inc. is licensed by AZ #0934973; FL # MLD174 and MLD795. Copyright © 2024 NFM, Inc. dba NFM Lending. America's Common Sense Lender™ Trade/service marks are the property of NFM, Inc. and/or its subsidiaries. Licensed by the Department of Financial Protection and Innovation under the California Residential Mortgage Lending Act. Copyright © 2025. 🏠