

Spring Valley

BISCAYNE

1,541 Sq. Ft. • 3 Bedrooms + Crawl Space • 2.5 Bathrooms • 2-Car Garage



1436 Coral Place, Longmont, CO 80504 • (720) 606-0746

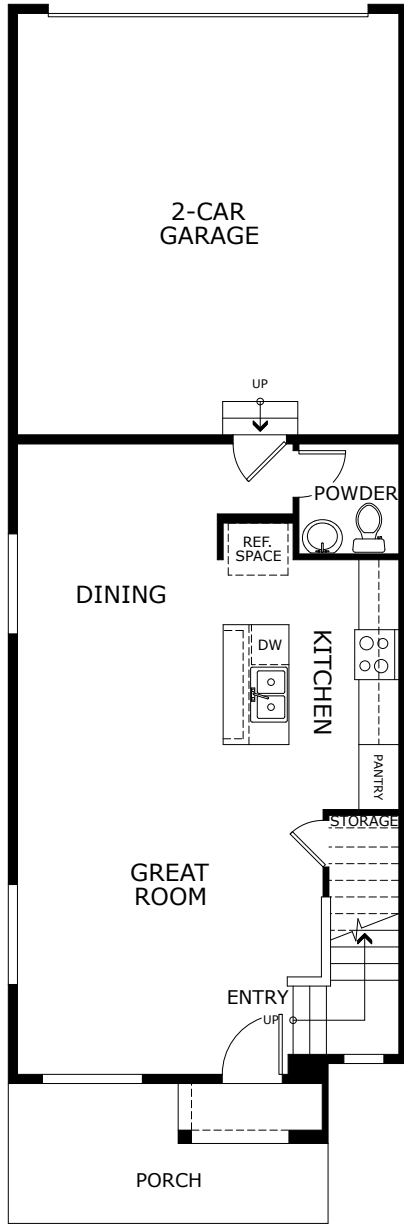
© 2025 Landsea Homes US Corporation. LANDSEA® and LIVE IN YOUR ELEMENT™ are federally registered trademarks of Landsea. Plans, terms, pricing, square footage, product information, features, promotions, amenities and community/neighborhood information are subject to change without notice or obligation. Renderings and floor plans are for representational purposes only and may not reflect the exact features or dimensions of your home. Some features and options shown may not be offered in your community. Square footage is approximate. Homes shown may not represent actual homesites. Models do not display racial preference. Please see the actual purchase agreement for additional information, disclosures and disclaimers relating to your home and its features. Individual energy costs and savings may vary. Landsea Homes does not guarantee any specific level of energy costs or savings. All rights reserved and strictly enforced. This is not an offering where prohibited by law. No information contained herein shall be deemed to constitute a representation or warranty of any kind. Please consult a Landsea Homes sales representative for details. Landsea Mortgage is a division of NFM, Inc. dba NFM Lending, NFM NMLS #2893. This is a co-marketing piece with Landsea Homes US Corporation ("Seller"). Landsea Mortgage has a financial relationship with Landsea Home Loans, and you may choose not to use Landsea Mortgage in connection with the purchase of a Landsea home. You are entitled to shop around for the best lender/real estate company for you. Landsea Mortgage is an equal housing lender. For full agency and state licensing information, please visit www.nfmlending.com/licensing. NFM, Inc.'s NMLS #2893 (www.nmlsconsumeraccess.org). NFM, Inc is not affiliated with, or an agent or division of, a governmental agency or depository institution. 🏠

LANDSEA[®]
HOMES
Live in your element™

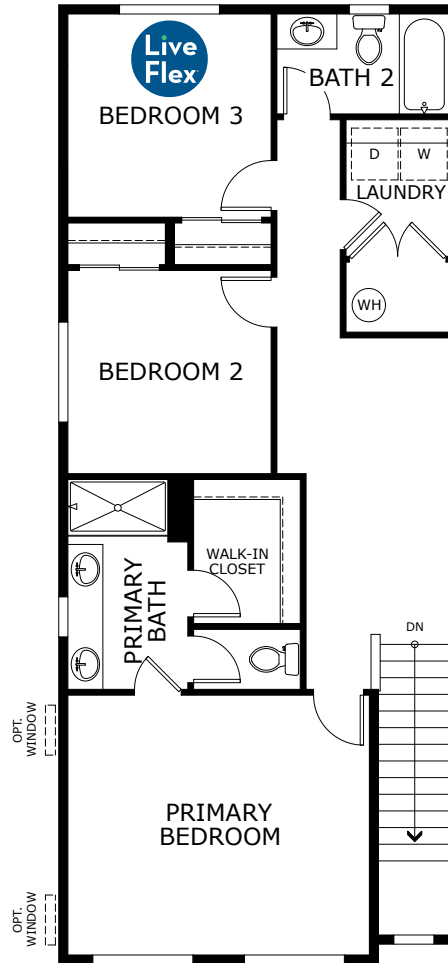
Spring Valley

BISCAYNE

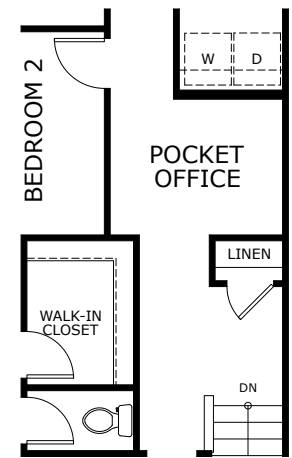
1,541 Sq. Ft. • 3 Bedrooms + Crawl Space • 2.5 Bathrooms • 2-Car Garage



FIRST FLOOR




SECOND FLOOR



OPTIONAL POCKET OFFICE

1436 Coral Place, Longmont, CO 80504 • (720) 606-0746

© 2025 Landsea Homes US Corporation. LANDSEA® and LIVE IN YOUR ELEMENT™ are federally registered trademarks of Landsea. Plans, terms, pricing, square footage, product information, features, promotions, amenities and community/neighborhood information are subject to change without notice or obligation. Renderings and floor plans are for representational purposes only and may not reflect the exact features or dimensions of your home. Some features and options shown may not be offered in your community. Square footage is approximate. Homes shown may not represent actual homesites. Models do not display racial preference. Please see the actual purchase agreement for additional information, disclosures and disclaimers relating to your home and its features. Individual energy costs and savings may vary. Landsea Homes does not guarantee any specific level of energy costs or savings. All rights reserved and strictly enforced. This is not an offering where prohibited by law. No information contained herein shall be deemed to constitute a representation or warranty of any kind. Please consult a Landsea Homes sales representative for details. Landsea Mortgage is a division of NFM, Inc. dba NFM Lending, NFM NMLS #2893. This is a co-marketing piece with Landsea Homes US Corporation ("Seller"). Landsea Mortgage has a financial relationship with Landsea Home Loans, and you may choose not to use Landsea Mortgage in connection with the purchase of a Landsea home. You are entitled to shop around for the best lender/real estate company for you. Landsea Mortgage is an equal housing lender. For full agency and state licensing information, please visit www.nfmlending.com/licensing. NFM, Inc.'s NMLS #2893 (www.nmlsconsumeraccess.org). NFM, Inc is not affiliated with, or an agent or division of, a governmental agency or depository institution. 

LANDSEA
HOMES
Live in your element™