

Silo Mills – Select Series

Concept 2492

2,515 Square Feet • 3 Bedrooms • 2.5 Baths • 2-Car Garage



ELEVATION D – STONE



ELEVATION A



ELEVATION A – STONE



ELEVATION B



ELEVATION B – STONE



ELEVATION C



ELEVATION C – STONE



ELEVATION D

4413 Sweet Acres Avenue, Joshua, TX 76058 • (817) 670-5958

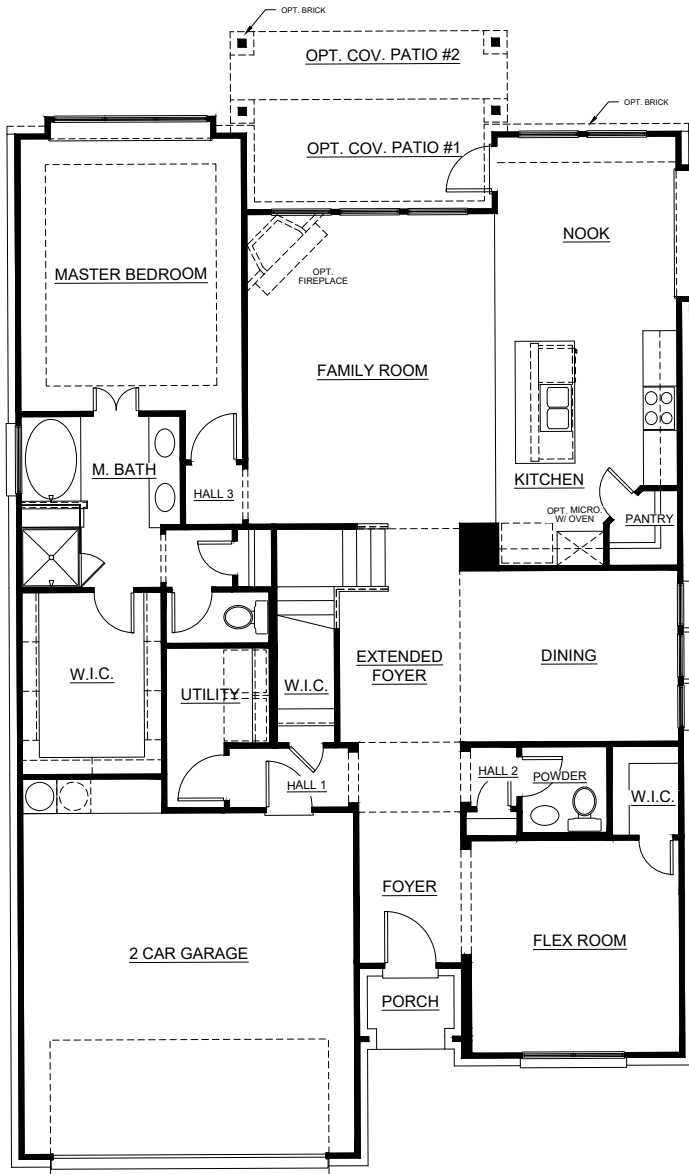
© 2024 Landsea Homes US Corporation. LANDSEA® and LIVE IN YOUR ELEMENT® are federally registered trademarks of Landsea. Plans, terms, pricing, square footage, product information, features, promotions, amenities and community/neighborhood information are subject to change without notice or obligation. Square footage is approximate. Floor plans, renderings and site maps are for representational purposes only, subject to change and not to scale. Homes shown do not represent actual homesites. Please see the actual purchase agreement for additional information, disclosures and disclaimers relating to your home and its features. Individual energy costs and savings may vary. Landsea Homes does not guarantee any specific level of energy costs or savings. All rights reserved and strictly enforced. This is not an offering where prohibited by law. No information contained herein shall be deemed to constitute a representation or warranty of any kind. Please consult a Landsea Homes sales representative for details. 📄

LANDSEA®
HOMES
Live in your element®

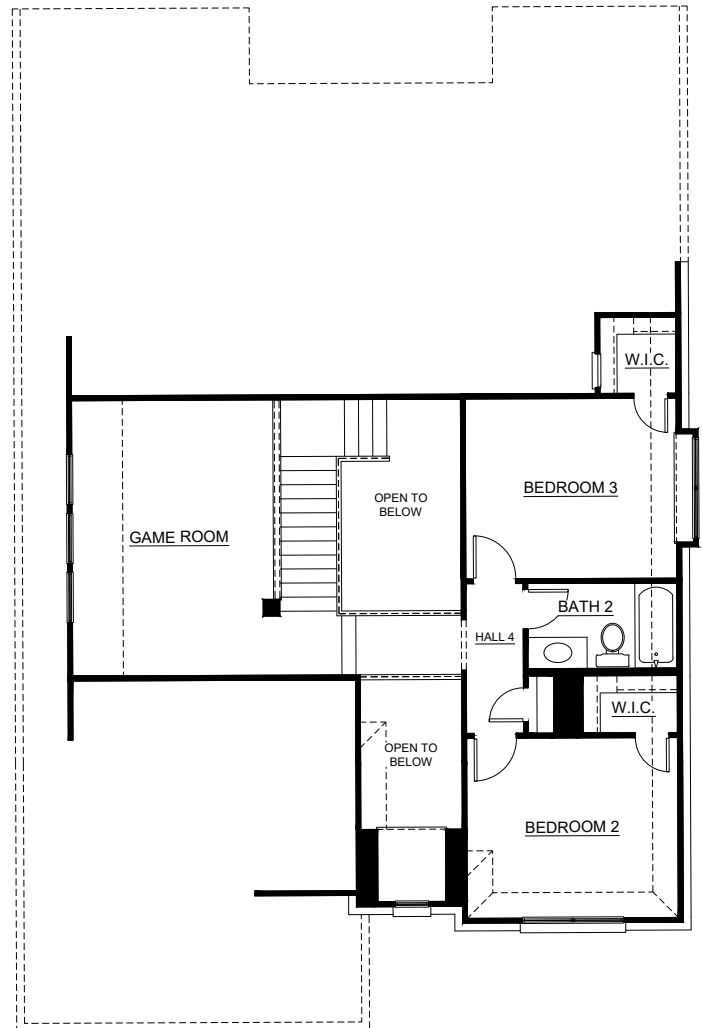
Silo Mills – Select Series

Concept 2492

2,515 Square Feet • 3 Bedrooms • 2.5 Baths • 2-Car Garage



FIRST FLOOR



SECOND FLOOR

4413 Sweet Acres Avenue, Joshua, TX 76058 • (817) 670-5958

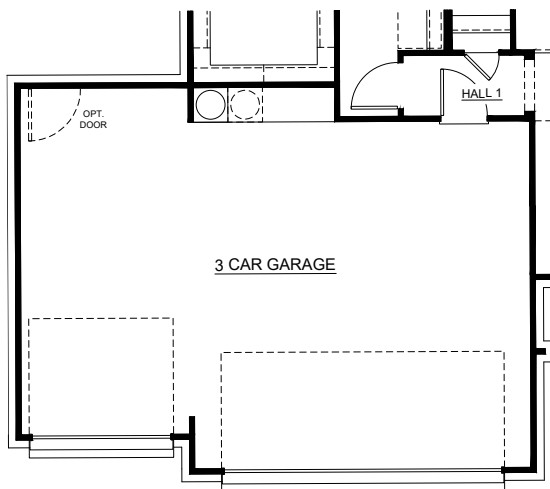
© 2024 Landsea Homes US Corporation. LANDSEA® and LIVE IN YOUR ELEMENT® are federally registered trademarks of Landsea. Plans, terms, pricing, square footage, product information, features, promotions, amenities and community/neighborhood information are subject to change without notice or obligation. Square footage is approximate. Floor plans, renderings and site maps are for representational purposes only, subject to change and not to scale. Homes shown do not represent actual homesites. Please see the actual purchase agreement for additional information, disclosures and disclaimers relating to your home and its features. Individual energy costs and savings may vary. Landsea Homes does not guarantee any specific level of energy costs or savings. All rights reserved and strictly enforced. This is not an offering where prohibited by law. No information contained herein shall be deemed to constitute a representation or warranty of any kind. Please consult a Landsea Homes sales representative for details. 🏠

LANDSEA®
HOMES
Live in your element®

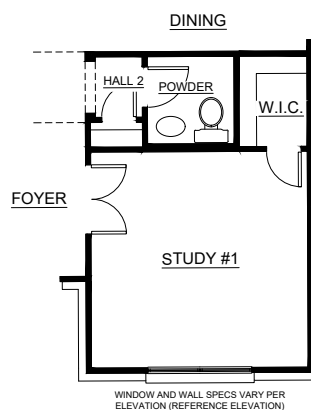
Silo Mills – Select Series

Concept 2492

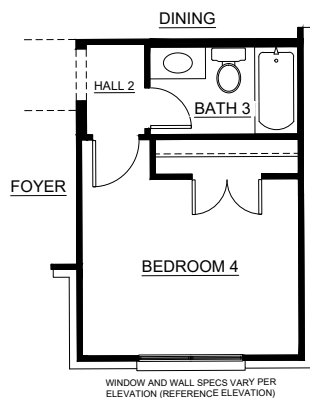
2,515 Square Feet • 3 Bedrooms • 2.5 Baths • 2-Car Garage



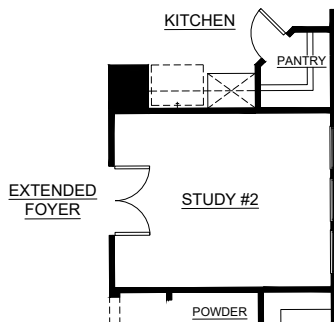
OPTIONAL 3-CAR GARAGE



OPTIONAL STUDY
ILO FLEX ROOM



OPTIONAL BEDROOM 4 W/ BATH 3
ILO FLEX ROOM W/ POWDER ROOM



OPTIONAL STUDY
ILO DINING ROOM

4413 Sweet Acres Avenue, Joshua, TX 76058 • (817) 670-5958

© 2024 Landsea Homes US Corporation. LANDSEA® and LIVE IN YOUR ELEMENT® are federally registered trademarks of Landsea. Plans, terms, pricing, square footage, product information, features, promotions, amenities and community/neighborhood information are subject to change without notice or obligation. Square footage is approximate. Floor plans, renderings and site maps are for representational purposes only, subject to change and not to scale. Homes shown do not represent actual homesites. Please see the actual purchase agreement for additional information, disclosures and disclaimers relating to your home and its features. Individual energy costs and savings may vary. Landsea Homes does not guarantee any specific level of energy costs or savings. All rights reserved and strictly enforced. This is not an offering where prohibited by law. No information contained herein shall be deemed to constitute a representation or warranty of any kind. Please consult a Landsea Homes sales representative for details. 🏠

LANDSEA
HOMES
Live in your element®