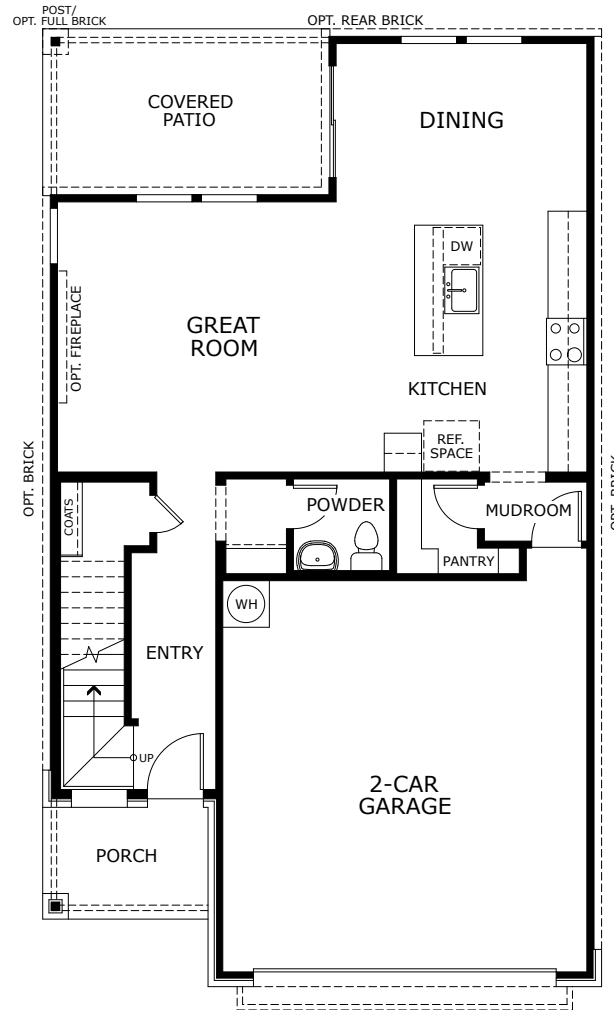




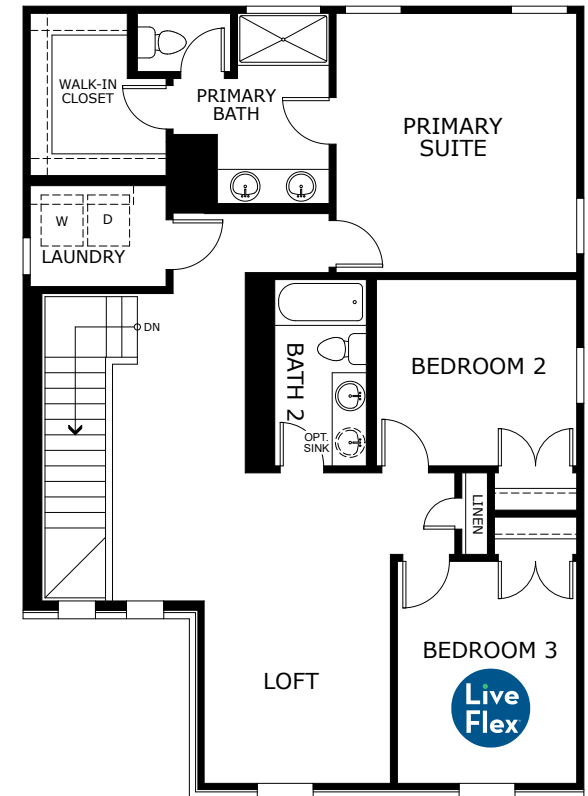
Hailey

TWO-STORY
 APPROX. 1,932 SQ. FT.
 3 BEDROOMS
 2.5 BATHS
 LOFT
 2-CAR GARAGE

FIRST FLOOR



SECOND FLOOR



PRELIMINARY

Village
 At Manor Commons

12801 Skimmer Run, Manor, TX 78653

LANDSEA
 HOMES
 Live in your element[®]

© 2024 Landsea Homes US Corporation. LANDSEA®, LIVEFLEX® and LIVE IN YOUR ELEMENT® are federally registered trademarks of Landsea. Bedroom(s) marked with LiveFlex are eligible for the LiveFlex optional program for an additional cost. You may select one (1) bedroom marked with LiveFlex for the program and pick your preferred package of options for that room. Plans, pricing, product information, features, LiveFlex options, amenities and community/neighborhood information are subject to change without notice or obligation. Photographs, renderings, virtual tours and floor plans are for representational purposes only and may not reflect the exact features or dimensions of your home or LiveFlex options. Square footage is approximate. Models do not display racial preference. Homes shown do not represent actual homesites. LiveFlex program and some features or options shown may not be offered in your community. Please see the actual purchase agreement for additional information, disclosures and disclaimers relating to your home, its features and your LiveFlex options. Individual energy costs and savings may vary. Landsea Homes does not guarantee any specific level of energy costs or savings. All rights reserved and strictly enforced. This is not an offering where prohibited by law. No information contained herein shall be deemed to constitute a representation or warranty of any kind. Please consult a Landsea Homes sales representative for details. 🏠

Hailey

TWO-STORY
APPROX. 1,932 SQ. FT.
3 BEDROOMS
2.5 BATHS
LOFT
2-CAR GARAGE



ELEVATION A



ELEVATION B



ELEVATION C



ELEVATION G

PRELIMINARY

Village
At Manor Commons

12801 Skimmer Run, Manor, TX 78653

LANDSEA[®]
HOMES
Live in your element[®]

© 2024 Landsea Homes US Corporation. LANDSEA[®], LIVEFLEX[®] and LIVE IN YOUR ELEMENT[®] are federally registered trademarks of Landsea. Bedroom(s) marked with LiveFlex are eligible for the LiveFlex optional program for an additional cost. You may select one (1) bedroom marked with LiveFlex for the program and pick your preferred package of options for that room. Plans, pricing, product information, features, LiveFlex options, amenities and community/neighborhood information are subject to change without notice or obligation. Photographs, renderings, virtual tours and floor plans are for representational purposes only and may not reflect the exact features or dimensions of your home or LiveFlex options. Square footage is approximate. Models do not display racial preference. Homes shown do not represent actual homesites. LiveFlex program and some features or options shown may not be offered in your community. Please see the actual purchase agreement for additional information, disclosures and disclaimers relating to your home, its features and your LiveFlex options. Individual energy costs and savings may vary. Landsea Homes does not guarantee any specific level of energy costs or savings. All rights reserved and strictly enforced. This is not an offering where prohibited by law. No information contained herein shall be deemed to constitute a representation or warranty of any kind. Please consult a Landsea Homes sales representative for details. 🏠