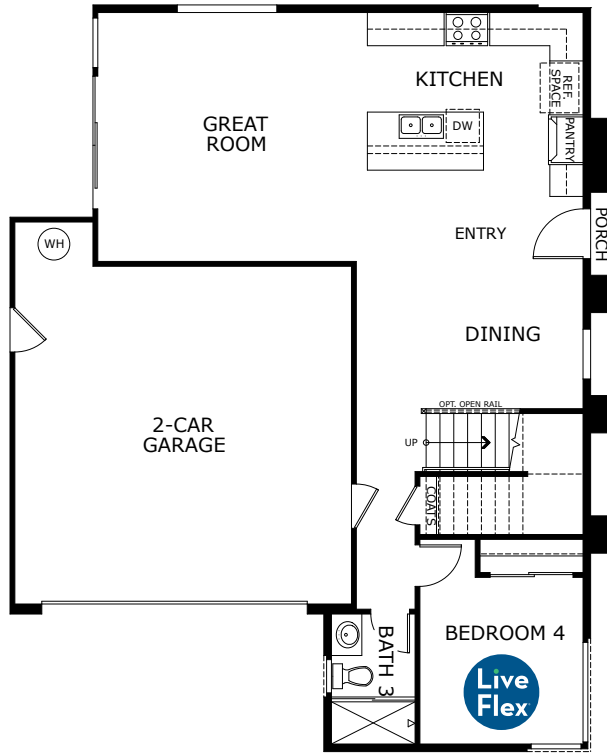


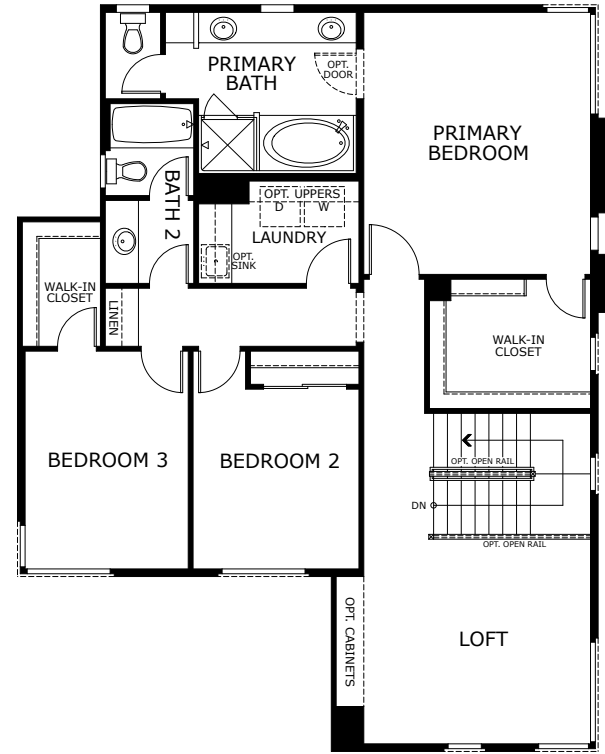


Plan 2

| 4 Bedrooms + Loft | 3 Bathrooms | 2-Car Garage | 2,148 Sq. Ft.



First Floor



Second Floor

www.landseahomes.com/southern-california/peri

Haven Ave. North of E. Sweet Bay Way, Ontario, CA 91761

© 2024 Landsea Homes. LANDSEA® and LIVE IN YOUR ELEMENT® are federally registered trademarks of Landsea. Bedroom(s) marked with LiveFlex™ are eligible for the LiveFlex optional program for an additional cost. You may select one (1) bedroom marked with LiveFlex for the program and pick your preferred package of options for that room. Plans, pricing, product information, features, LiveFlex options, amenities and community/neighborhood information are subject to change without notice or obligation. Photographs, renderings, virtual tours and floor plans are for representational purposes only and may not reflect the exact features or dimensions of your home or LiveFlex options. Square footage is approximate. LiveFlex program and some features or options shown may not be offered in your community. Please see the actual purchase agreement for additional information, disclosures and disclaimers relating to your home, its features and your LiveFlex options. All rights reserved and strictly enforced. This is not an offering where prohibited by law. No information contained herein shall be deemed to constitute a representation or warranty of any kind. Please consult a Landsea Homes sales representative for details. Landsea Real Estate California, Inc. CA DRE license #02030520.

