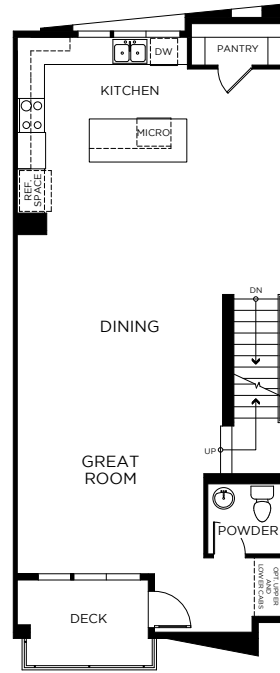
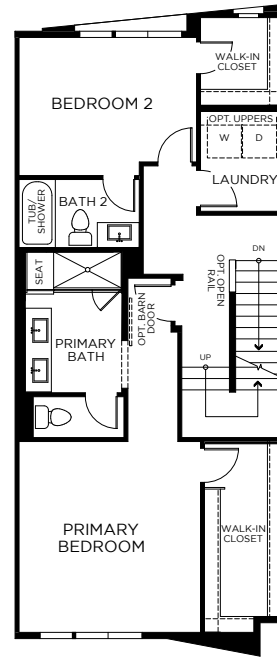


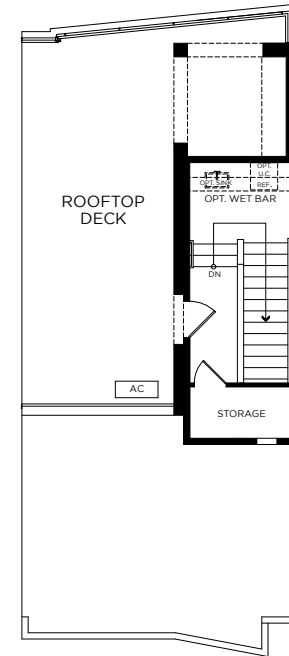
FIRST FLOOR



SECOND FLOOR



THIRD FLOOR



FOURTH FLOOR

Scan for More Information



2315 Stanford Street, Alameda, CA 94501 | (510) 221-0443 | landseahomes.com/waterside-at-alameda-marina

PRELIMINARY AND SUBJECT TO CHANGE

© 2024 Landsea Homes US Corporation. LANDSEA®, LIVE IN YOUR ELEMENT™ and LIVEFLEX® are federally registered trademarks of Landsea. Bedroom(s) marked with LiveFlex® are eligible for the LiveFlex optional program for an additional cost. You may select one (1) bedroom marked with LiveFlex for the program and pick your preferred package of options for that room. Plans, terms, pricing, square footage, product information, features, promotions, LiveFlex options, amenities and community/neighborhood information are subject to change without notice or obligation. Photographs, rendering and floor plans are for representational purposes only and may not reflect the exact features or dimensions of your home or LiveFlex options. Site map is artist's concept and not to scale. Models do not reflect racial or other preferences. Homes shown do not represent actual homesites. Views not guaranteed. Square footage is approximate. LiveFlex program and some features or options shown may not be offered in your community. Please see the actual purchase agreement for additional information, disclosures and disclaimers relating to your home, its features and your LiveFlex options. Individual energy costs and savings may vary. Landsea Homes does not guarantee any specific level of energy costs or savings. *HOA costs subject to change. All rights reserved and strictly enforced. This is not an offering where prohibited by law. No information contained herein shall be deemed to constitute a representation or warranty of any kind. Please consult a Landsea Homes sales representative for details. Landsea Real Estate California, Inc. CA DRE license #02030520.



FIRST FLOOR

SECOND FLOOR

THIRD FLOOR

FOURTH FLOOR

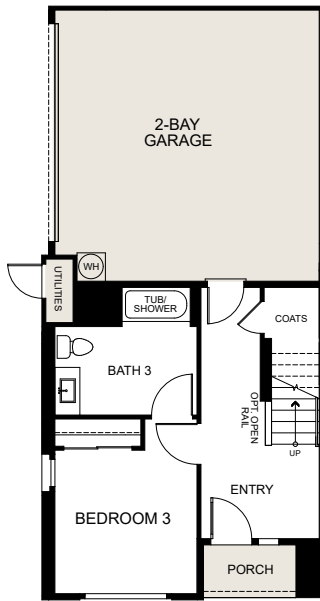
Scan for More Information



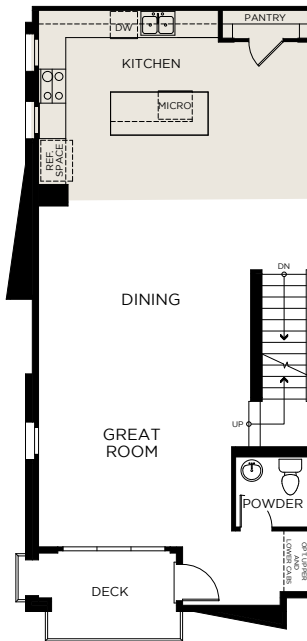
2315 Stanford Street, Alameda, CA 94501 | (510) 221-0443 | landseahomes.com/waterside-at-alameda-marina

PRELIMINARY AND SUBJECT TO CHANGE

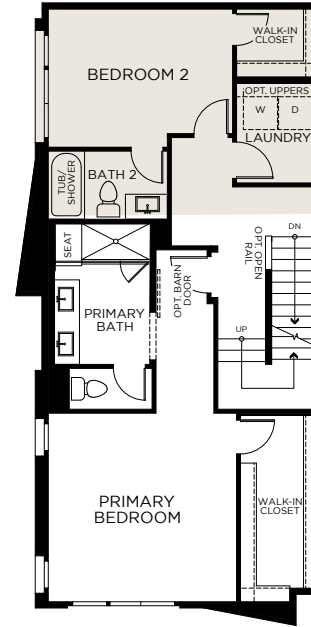
© 2024 Landsea Homes US Corporation. LANDSEA®, LIVE IN YOUR ELEMENT™ and LIVEFLEX® are federally registered trademarks of Landsea. Bedroom(s) marked with LiveFlex® are eligible for the LiveFlex optional program for an additional cost. You may select one (1) bedroom marked with LiveFlex for the program and pick your preferred package of options for that room. Plans, terms, pricing, square footage, product information, features, promotions, LiveFlex options, amenities and community/neighborhood information are subject to change without notice or obligation. Photographs, rendering and floor plans are for representational purposes only and may not reflect the exact features or dimensions of your home or LiveFlex options. Site map is artist's concept and not to scale. Models do not reflect racial or other preferences. Homes shown do not represent actual homesites. Views not guaranteed. Square footage is approximate. LiveFlex program and some features or options shown may not be offered in your community. Please see the actual purchase agreement for additional information, disclosures and disclaimers relating to your home, its features and your LiveFlex options. Individual energy costs and savings may vary. Landsea Homes does not guarantee any specific level of energy costs or savings. *HOA costs subject to change. All rights reserved and strictly enforced. This is not an offering where prohibited by law. No information contained herein shall be deemed to constitute a representation or warranty of any kind. Please consult a Landsea Homes sales representative for details. Landsea Real Estate California, Inc. CA DRE license #02030520.



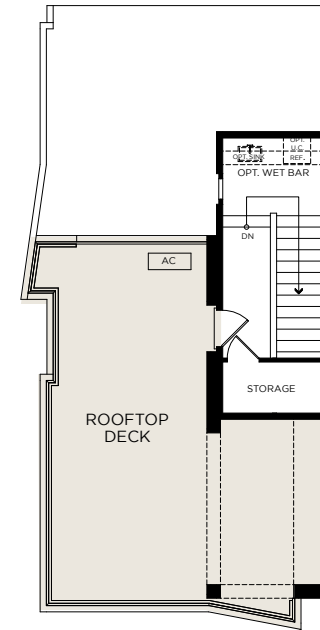
FIRST FLOOR



SECOND FLOOR



THIRD FLOOR



FOURTH FLOOR

Scan for More Information



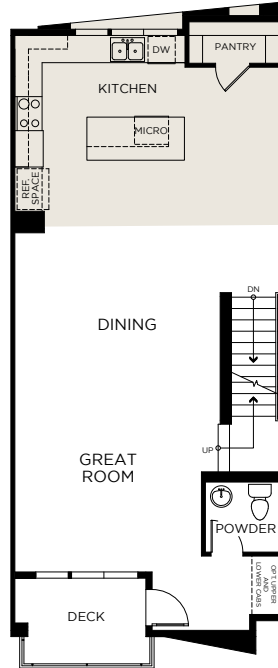
2315 Stanford Street, Alameda, CA 94501 | (510) 221-0443 | landseahomes.com/waterside-at-alameda-marina

PRELIMINARY AND SUBJECT TO CHANGE

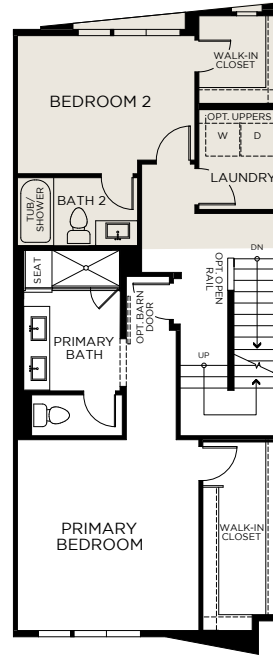
© 2024 Landsea Homes US Corporation. LANDSEA®, LIVE IN YOUR ELEMENT™ and LIVEFLEX® are federally registered trademarks of Landsea. Bedroom(s) marked with LiveFlex® are eligible for the LiveFlex optional program for an additional cost. You may select one (1) bedroom marked with LiveFlex for the program and pick your preferred package of options for that room. Plans, terms, pricing, square footage, product information, features, promotions, LiveFlex options, amenities and community/neighborhood information are subject to change without notice or obligation. Photographs, rendering and floor plans are for representational purposes only and may not reflect the exact features or dimensions of your home or LiveFlex options. Site map is artist's concept and not to scale. Models do not reflect racial or other preferences. Homes shown do not represent actual homesites. Views not guaranteed. Square footage is approximate. LiveFlex program and some features or options shown may not be offered in your community. Please see the actual purchase agreement for additional information, disclosures and disclaimers relating to your home, its features and your LiveFlex options. Individual energy costs and savings may vary. Landsea Homes does not guarantee any specific level of energy costs or savings. *HOA costs subject to change. All rights reserved and strictly enforced. This is not an offering where prohibited by law. No information contained herein shall be deemed to constitute a representation or warranty of any kind. Please consult a Landsea Homes sales representative for details. Landsea Real Estate California, Inc. CA DRE license #02030520.



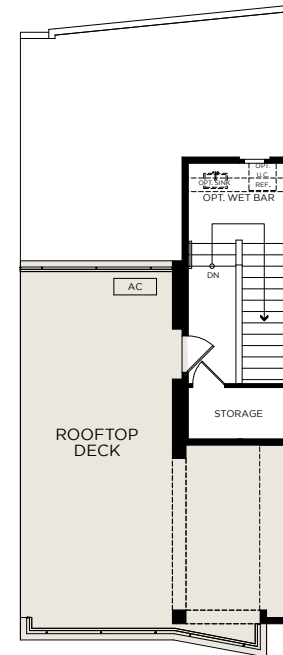
FIRST FLOOR



SECOND FLOOR



THIRD FLOOR



FOURTH FLOOR

Scan for More Information



2315 Stanford Street, Alameda, CA 94501 | (510) 221-0443 | landseahomes.com/waterside-at-alameda-marina

PRELIMINARY AND SUBJECT TO CHANGE

© 2024 Landsea Homes US Corporation. LANDSEA®, LIVE IN YOUR ELEMENT® and LIVEFLEX® are federally registered trademarks of Landsea. Bedroom(s) marked with LiveFlex® are eligible for the LiveFlex optional program for an additional cost. You may select one (1) bedroom marked with LiveFlex for the program and pick your preferred package of options for that room. Plans, terms, pricing, square footage, product information, features, promotions, LiveFlex options, amenities and community/neighborhood information are subject to change without notice or obligation. Photographs, rendering and floor plans are for representational purposes only and may not reflect the exact features or dimensions of your home or LiveFlex options. Site map is artist's concept and not to scale. Models do not reflect racial or other preferences. Homes shown do not represent actual homesites. Views not guaranteed. Square footage is approximate. LiveFlex program and some features or options shown may not be offered in your community. Please see the actual purchase agreement for additional information, disclosures and disclaimers relating to your home, its features and your LiveFlex options. Individual energy costs and savings may vary. Landsea Homes does not guarantee any specific level of energy costs or savings. *HOA costs subject to change. All rights reserved and strictly enforced. This is not an offering where prohibited by law. No information contained herein shall be deemed to constitute a representation or warranty of any kind. Please consult a Landsea Homes sales representative for details. Landsea Real Estate California, Inc. CA DRE license #02030520.