

PASTORA

2,314 – 2,444 Sq. Ft. | 3 – 5 Bedrooms + Study | 2.5 – 3 Baths | 2- to 3-Car Garage



SPANISH ELEVATION



RANCH ELEVATION



PRAIRIE ELEVATION

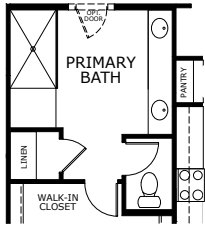
7044 E Bushy Tail Ln, San Tan Valley, AZ 85143 • (480) 500-7290

© 2024 Landsea Homes US Corporation. LANDSEA®, LIVE IN YOUR ELEMENT® and LIVEFLEX® are federally registered trademarks of Landsea. Bedroom(s) marked with LiveFlex® are eligible for the LiveFlex optional program for an additional cost. You may select one (1) bedroom marked with LiveFlex for the program and pick your preferred package of options for that room. Plans, terms, pricing, square footage, product information, features, promotions, LiveFlex options, amenities and community/neighborhood information are subject to change without notice or obligation. Square footage is approximate. Rendering(s)/home(s) shown may not represent actual homesite(s) for sale. Site map is for representational purposes only and not to scale. Model(s) do(es) not display racial preference. Please see the actual purchase agreement for additional information, disclosures and disclaimers relating to your home, its features and your LiveFlex options. Individual energy costs and savings may vary. Landsea Homes does not guarantee any specific level of energy costs or savings. All rights reserved and strictly enforced. This is not an offering where prohibited by law. No information contained herein shall be deemed to constitute a representation or warranty of any kind. Please consult a Landsea Homes sales representative for details. Arizona Broker #BR531087000. LIC #C0688244000. ROC #295355. ROC #324050. 05/24. This is a co-marketing piece with Landsea Homes. Landsea Mortgage is a division of NFM, Inc. NFM, Inc. – NMLS #2893. NFM, Inc. is an equal housing lender. NFM, Inc. dba Landsea Mortgage has a financial relationship with the homebuilder Landsea Homes, and you may choose not to use NFM, Inc. dba Landsea Mortgage as your lender in connection with the purchase of a Landsea home. You are entitled to shop around for the best lender/real estate company for you. This is not a credit decision or a commitment to lend. Landsea Mortgage cannot predict where rates will be in the future. Make sure you understand the features associated with the loan program you choose and that it meets your unique financial needs. For full agency and state licensing information, please visit www.nfm lending.com/licensing. NFM, Inc.'s NMLS #2893 (www.nmlsconsumeraccess.org). NFM, Inc. is not affiliated with, or an agent or division of, a governmental agency or depository institution. Landsea Mortgage powered by NFM Tempe branch is located at 850 West Elliot Road, Suite 101, Tempe, AZ 85284. Branch NMLS #1490627. Branch licensing information: AZ 0121417. NFM, Inc. dba NFM Lending. NFM, Inc. is licensed by AZ #0934973 (dba NFM Consultants, Inc.). Copyright © 2024.

LANDSEA
HOMES
Live in your element®

PASTORA

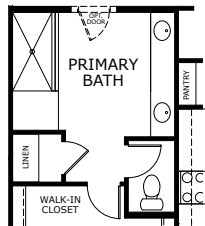
2,314 - 2,444 Sq. Ft. | 3 - 5 Bedrooms + Study | 2.5 - 3 Baths | 2- to 3-Car Garage



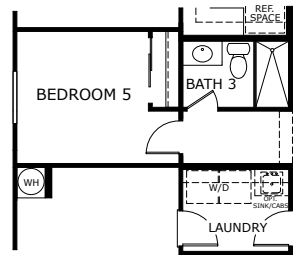
OPTIONAL SUPER SHOWER AT PRIMARY BATH



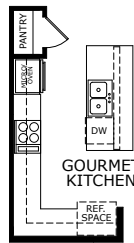
OPTIONAL TUB AND SHOWER AT PRIMARY BATH



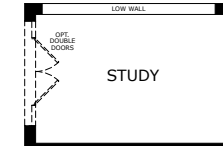
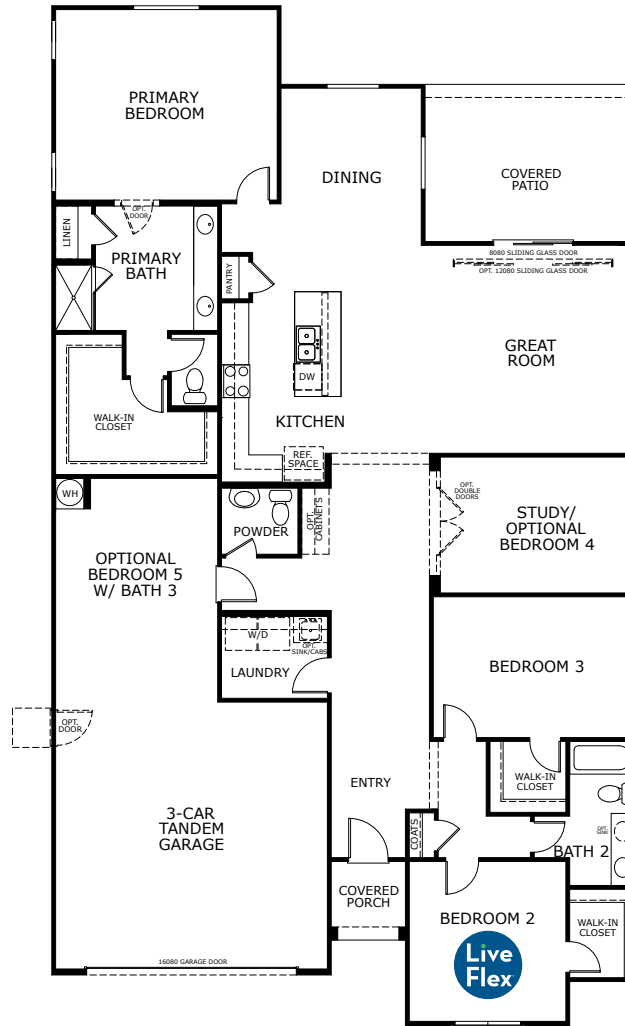
OPTIONAL SUPER SHOWER HALF WALL AT PRIMARY BATH



OPTIONAL BEDROOM 5 WITH BATH 3 IN LIEU OF TANDEM GARAGE



OPTIONAL GOURMET KITCHEN



OPTIONAL LOW WALL AT STUDY



OPTIONAL BEDROOM 4 IN LIEU OF STUDY

7044 E Bushy Tail Ln, San Tan Valley, AZ 85143 • (480) 500-7290

© 2024 Landsea Homes US Corporation. LANDSEA®, LIVE IN YOUR ELEMENT™ and LIVEFLEX® are federally registered trademarks of Landsea. Bedroom(s) marked with LiveFlex® are eligible for the LiveFlex optional program for an additional cost. You may select one (1) bedroom marked with LiveFlex for the program and pick your preferred package of options for that room. Plans, terms, pricing, square footage, product information, features, promotions, LiveFlex options, amenities and community/neighborhood information are subject to change without notice or obligation. Square footage is approximate. Rendering(s)/home(s) shown may not represent actual homesite(s) for sale. Site map is for representational purposes only and not to scale. Model(s) do(es) not display racial preference. Please see the actual purchase agreement for additional information, disclosures and disclaimers relating to your home, its features and your LiveFlex options. Individual energy costs and savings may vary. Landsea Homes does not guarantee any specific level of energy costs or savings. All rights reserved and strictly enforced. This is not an offering where prohibited by law. No information contained herein shall be deemed to constitute a representation or warranty of any kind. Please consult a Landsea Homes sales representative for details. Arizona Broker #BR531087000. LIC #CO688244000. ROC #295355. ROC #324050. 05/24. This is a co-marketing piece with Landsea Homes. Landsea Mortgage is a division of NFM, Inc. NFM, Inc. - NMLS #2893. NFM, Inc. is an equal housing lender. NFM, Inc. dba Landsea Mortgage has a financial relationship with the homebuilder Landsea Homes, and you may choose not to use NFM, Inc. dba Landsea Mortgage as your lender in connection with the purchase of a Landsea home. You are entitled to shop around for the best lender/real estate company for you. This is not a credit decision or a commitment to lend. Landsea Mortgage cannot predict where rates will be in the future. Make sure you understand the features associated with the loan program you choose and that it meets your unique financial needs. For full agency and state licensing information, please visit www.nfm lending.com/licensing. NFM, Inc.'s NMLS #2893 (www.nmlsconsumeraccess.org). NFM, Inc. is not affiliated with, or an agent or division of, a governmental agency or depository institution. Landsea Mortgage powered by NFM Tempe branch is located at 850 West Elliot Road, Suite 101, Tempe, AZ 85284. Branch NMLS #1490627. Branch licensing information: AZ 0121417. NFM, Inc. dba NFM Lending. NFM, Inc. is licensed by AZ #0934973 (dba NFM Consultants, Inc.). Copyright © 2024.

LANDSEA
HOMES
Live in your element®