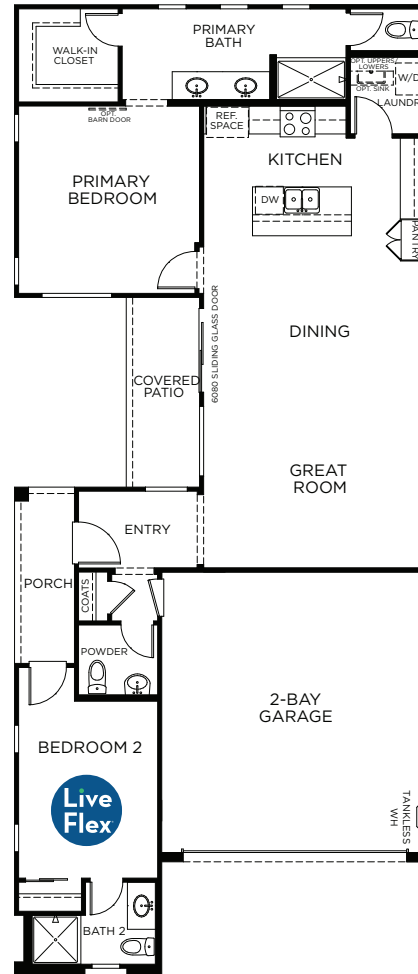


Skye Ridge at Victory

ECLIPSE

1,278 Square Feet • 2 Bedrooms • 2.5 Baths • 2-Car Garage



PRELIMINARY

20975 W. Pasadena Ave., Buckeye, AZ 85396 • (623) 232-8436

© 2024 Landsea Homes US Corporation. LANDSEA®, LIVE IN YOUR ELEMENT® and LIVEFLEX® are federally registered trademarks of Landsea. Bedroom(s) marked with LiveFlex® are eligible for the LiveFlex optional program for an additional cost. You may select one (1) bedroom marked with LiveFlex for the program and pick your preferred package of options for that room. Plans, terms, pricing, square footages, product information, features, promotions, LiveFlex® options, amenities and community/neighborhood information are subject to change without notice or obligation. Square footages are approximate. Renderings are artist's conceptions. Homes shown may not reflect actual homesites. Site map is for illustrative purposes only and not to scale. Please see the actual purchase agreement for additional information, disclosures and disclaimers relating to your home, its features and your LiveFlex options. Individual energy costs and savings may vary. Landsea Homes does not guarantee any specific level of energy costs or savings. All rights reserved and strictly enforced. This is not an offering where prohibited by law. No information contained herein shall be deemed to constitute a representation or warranty of any kind. Please consult a Landsea Homes sales representative for details. Arizona Broker #BR531087000. LIC #C0688244000. ROC #257091. ROC #295355. ROC #324050. ROC #275051.10/23. Landsea Mortgage is a division of NFM, Inc. dba NFM Lending, NFM NMLS #2893. This is a co-marketing piece with Landsea Homes US Corporation ("Seller"). Landsea Mortgage has a financial relationship with Landsea Home Loans, and you may choose not to use Landsea Mortgage in connection with the purchase of a Landsea home. You are entitled to shop around for the best lender/real estate company for you. Landsea Mortgage is an equal housing lender. For full agency and state licensing information, please visit www.nfmlending.com/licensing. NFM, Inc.'s NMLS #2893 (www.nmlsconsumeraccess.org). NFM, Inc is not affiliated with, or an agent or division of, a governmental agency or depository institution. Copyright © 2024.

LANDSEA[®]
HOMES
Live in your element[®]

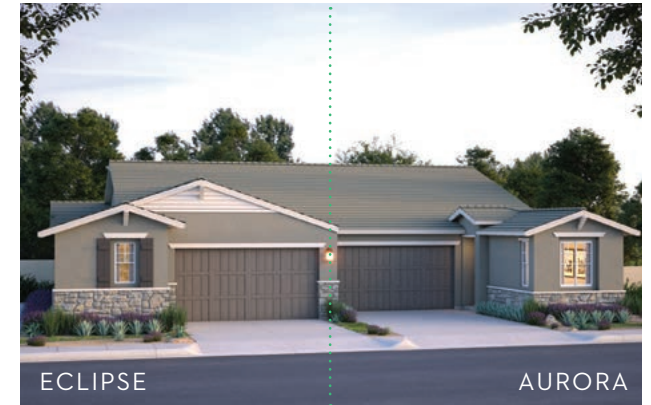
Skye Ridge at Victory



ECLIPSE

AURORA

SPANISH/MISSION



ECLIPSE

AURORA

BUNGALOW/CRAFTSMAN




ECLIPSE

AURORA

DESERT PRAIRIE

20975 W. Pasadena Ave., Buckeye, AZ 85396 • (623) 232-8436

© 2024 Landsea Homes US Corporation. LANDSEA®, LIVE IN YOUR ELEMENT® and LIVEFLEX® are federally registered trademarks of Landsea. Bedroom(s) marked with LiveFlex® are eligible for the LiveFlex optional program for an additional cost. You may select one (1) bedroom marked with LiveFlex for the program and pick your preferred package of options for that room. Plans, terms, pricing, square footages, product information, features, promotions, LiveFlex® options, amenities and community/neighborhood information are subject to change without notice or obligation. Square footages are approximate. Renderings are artist's conceptions. Homes shown may not reflect actual homesites. Site map is for illustrative purposes only and not to scale. Please see the actual purchase agreement for additional information, disclosures and disclaimers relating to your home, its features and your LiveFlex options. Individual energy costs and savings may vary. Landsea Homes does not guarantee any specific level of energy costs or savings. All rights reserved and strictly enforced. This is not an offering where prohibited by law. No information contained herein shall be deemed to constitute a representation or warranty of any kind. Please consult a Landsea Homes sales representative for details. Arizona Broker #BR531087000. LIC #C0688244000. ROC #257091. ROC #295355. ROC #324050. ROC #275051.10/23. Landsea Mortgage is a division of NFM, Inc. dba NFM Lending, NFM NMLS #2893. This is a co-marketing piece with Landsea Homes US Corporation ("Seller"). Landsea Mortgage has a financial relationship with Landsea Home Loans, and you may choose not to use Landsea Mortgage in connection with the purchase of a Landsea home. You are entitled to shop around for the best lender/real estate company for you. Landsea Mortgage is an equal housing lender. For full agency and state licensing information, please visit www.nfmlending.com/licensing. NFM, Inc.'s NMLS #2893 (www.nmlsconsumeraccess.org). NFM, Inc is not affiliated with, or an agent or division of, a governmental agency or depository institution. Copyright © 2024. 

LANDSEA[®]
HOMES
Live in your element[®]