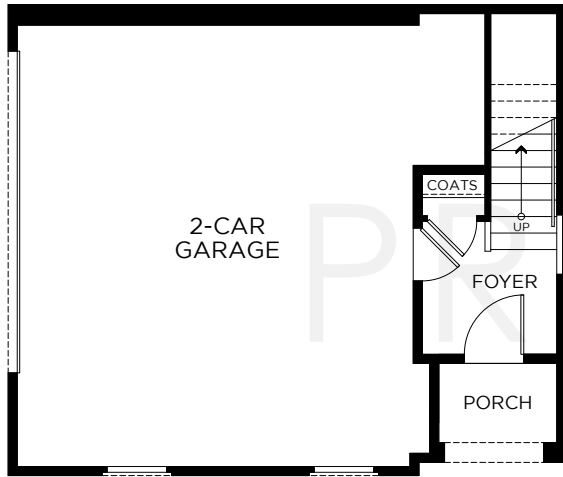


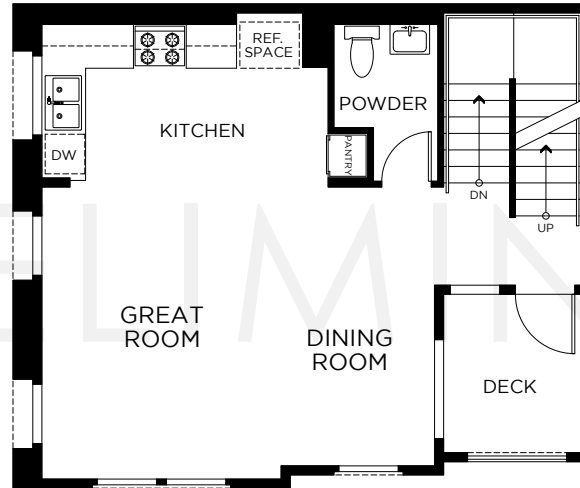
Plan 1

AFFORDABLE HOUSING PROGRAM

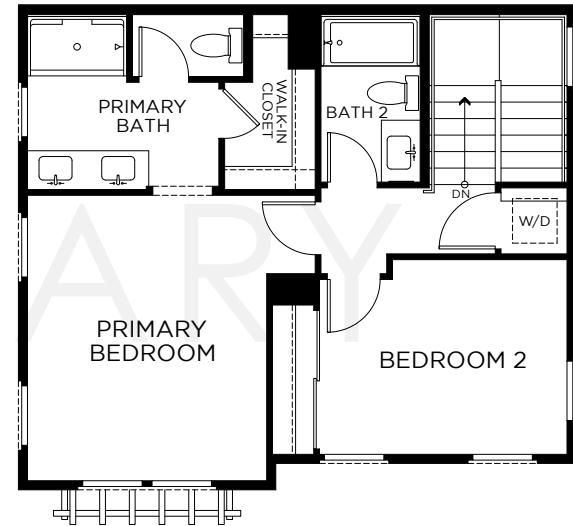
2 BEDROOMS | 2.5 BATHROOMS | APPROX. 1,212 – 1,236 SQ. FT.



FIRST FLOOR



SECOND FLOOR



THIRD FLOOR



LandseaHomes.com • 27102 Via Caminata, San Juan Capistrano, CA 92675 • (949) 432-9822

© 2023 Landsea Homes US Corporation. LANDSEA® and LIVE IN YOUR ELEMENT® are federally registered trademarks of Landsea. Floor plan is for representational purposes only and may not reflect the exact features or dimensions of your home. Square footage is approximate. The Affordable Housing Program, in partnership with the City of San Juan Capistrano, applies only to Avelina Plan One and only for moderate income households. These are for-sale homes, not rentals. The purchaser of these homes must meet all requirements for consideration and agree to execute and comply with all regulations and limitations set forth in the Affordable Housing Program Agreement. Submitting information to the lender does not establish, expressly or by implication, that a potential applicant will be eligible, or will be approved for, the purchase of an affordable home. The applicant will be required to submit a significant amount of documentary evidence to the builder, mortgage lender and the City during the formal underwriting process. Please consult a Landsea Homes sales representative for details. Landsea Real Estate California, Inc. CA DRE #02030520.

