

L/NDSEA[®]
HOMES
Live in your element[®]

ellis

townsend

kinbridge

hartwell



© 2022 LANDSEA HOMES CORPORATION. LANDSEA®, LIVE IN YOUR ELEMENT® and LIVEFLEX® ARE FEDERALLY REGISTERED TRADEMARKS OF LANDSEA. BEDROOM(S) MARKED WITH LIVEFLEX® ARE ELIGIBLE FOR THE LIVEFLEX OPTIONAL PROGRAM FOR AN ADDITIONAL COST. YOU MAY SELECT ONE (1) BEDROOM MARKED WITH LIVEFLEX FOR THE PROGRAM AND PICK YOUR PREFERRED PACKAGE OF OPTIONS FOR THAT ROOM. PLANS, TERMS, PRICING, SQUARE FOOTAGES, PRODUCT INFORMATION, FEATURES, PROMOTIONS, LIVEFLEX OPTIONS, AMENITIES AND COMMUNITY/NEIGHBORHOOD INFORMATION ARE SUBJECT TO CHANGE WITHOUT NOTICE OR OBLIGATION. PHOTOGRAPHS, RENDERINGS, VIRTUAL TOURS AND FLOOR PLANS ARE FOR REPRESENTATIONAL PURPOSES ONLY AND MAY NOT REFLECT THE EXACT FEATURES OR DIMENSIONS OF YOUR HOME OR LIVEFLEX OPTIONS. MODELS DO NOT REFLECT RACIAL OR OTHER PREFERENCES. HOMES SHOWN DO NOT REPRESENT ACTUAL HOMESITES. SQUARE FOOTAGES ARE APPROXIMATE. LIVEFLEX PROGRAM AND SOME FEATURES OR OPTIONS SHOWN MAY NOT BE OFFERED IN YOUR COMMUNITY. MODELS DISPLAY DECORATOR ITEMS AND FURNITURE THAT ARE NOT AVAILABLE FOR PURCHASE. PLEASE SEE THE ACTUAL PURCHASE AGREEMENT FOR ADDITIONAL INFORMATION, DISCLOSURES AND DISCLAIMERS RELATING TO YOUR HOME, ITS FEATURES AND YOUR LIVEFLEX OPTIONS. INDIVIDUAL ENERGY COSTS AND SAVINGS MAY VARY. LANDSEA HOMES DOES NOT GUARANTEE ANY SPECIFIC LEVEL OF ENERGY COSTS OR SAVINGS. ALL RIGHTS RESERVED AND STRICTLY ENFORCED. THIS IS NOT AN OFFERING WHERE PROHIBITED BY LAW. NO INFORMATION CONTAINED HEREIN SHALL BE DEEMED TO CONSTITUTE A REPRESENTATION OR WARRANTY OF ANY KIND. PLEASE CONSULT A LANDSEA HOMES SALES REPRESENTATIVE FOR DETAILS. LANDSEA REAL ESTATE, INC. CA DRE LICENSE #02030520.



hartwell | at Ellis

Hartwell is your place to make memories and grow with family-sized homes offering 2,297 to 3,733 square feet, up to six bedrooms and four bathrooms. Inspired living takes shape in these single-family homes with California rooms, multigenerational suites and single-story living options for maximum convenience and an ultimate living experience.



YOUR *place*
TO MAKE
memories
GROW





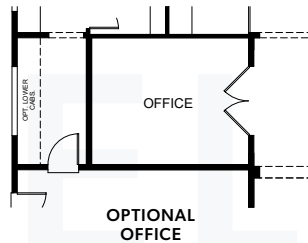
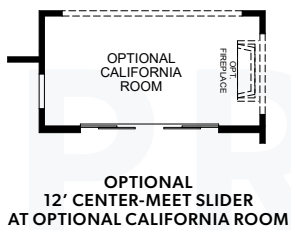
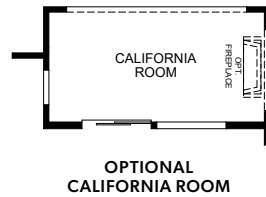
ELEVATION 12A



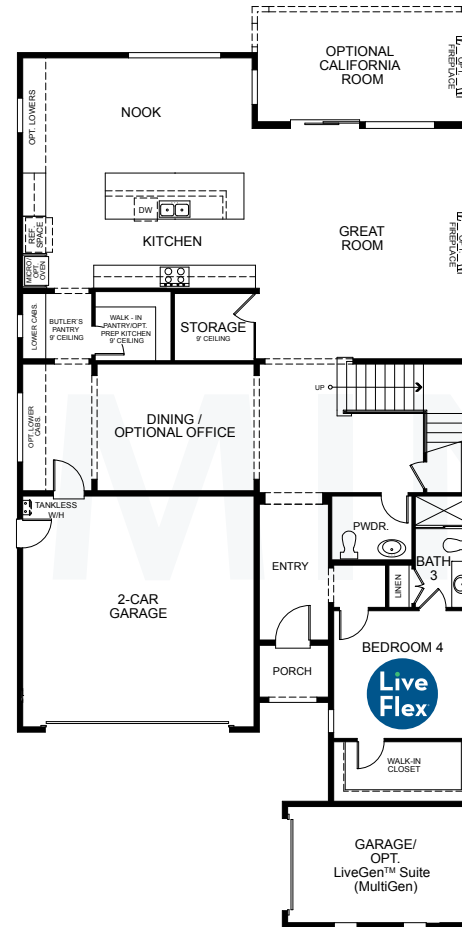
ELEVATION 12B (MODELED)



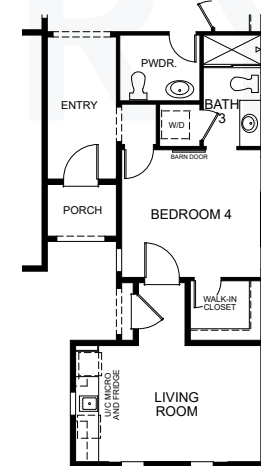
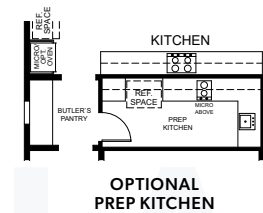
ELEVATION 12C



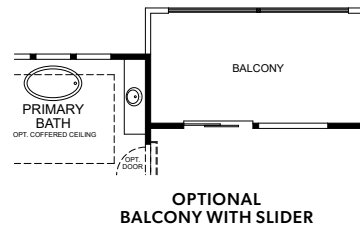
OPTIONS



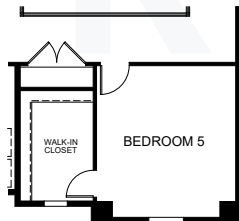
FIRST FLOOR



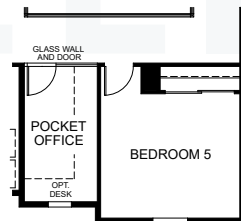
OPTIONS



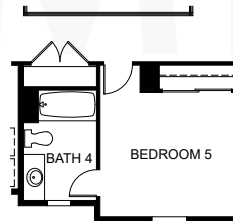
OPTIONAL
BALCONY WITH SLIDER



OPTIONAL
BEDROOM 5

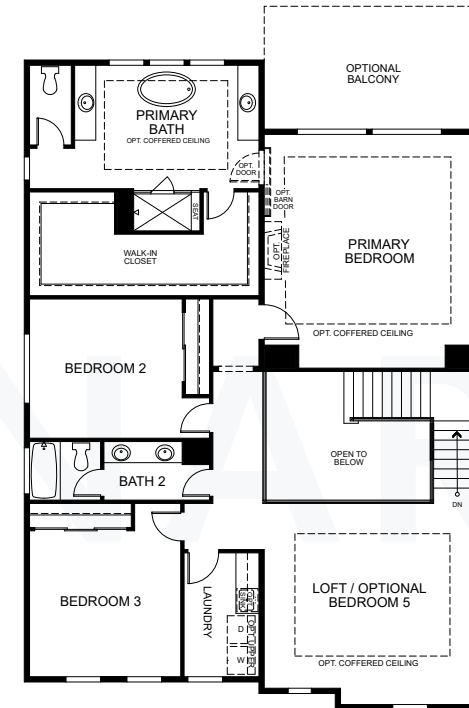


OPTIONAL
BEDROOM 5 AND POCKET OFFICE
WITH GLASS WALL AND DOOR



OPTIONAL
BEDROOM 5 WITH
BATH 4

OPTIONS



SECOND FLOOR

LUXURY LIVING

- Stylish exterior designs and spacious floor plans with included bonus rooms per plan
- Optional outdoor rooms for indoor-outdoor living
- Community parks with unrivaled amenities, dog park and planned shopping center
- Planned on-site K-8 school in the highly acclaimed Jefferson School District
- Planned on-site Serpa Aquatic Park with competition pool and family activities

DESIGNER INTERIORS

- Impressive 8' exterior doors
- 2-1/4" door casings and 5-1/4" baseboards
- Kwikset[®] hardware in Iron Black at entry and polished chrome at interior doors
- Shaw[®] Optimum vinyl plank flooring at entry, primary bath, secondary bathrooms and laundry
- Choice Shaw[®] carpeting selections for stairs, primary bedroom and walk-in closet, landings and secondary bedrooms and closet
- Premium Kelly-Moore[®] paint
- Staircase with paint-grade vertical balusters and newel posts
- LED lighting throughout

INSPIRING KITCHEN

- 36" Bertazzoni[®] stainless steel gas range with five burners and undermount hood
- Stainless steel multi-cycle Bertazzoni[®] dishwasher
- Built-in stainless steel Bertazzoni[®] microwave
- Optional second Bertazzoni[®] oven in stainless steel finish
- Distinctive Shaker style maple wood kitchen cabinetry with melamine interiors

- Daltile[®] quartz countertops with 6" backsplash throughout and full backsplash at range
- LED lighting and under-cabinet task lighting
- Sterling[®] Ludington[®] stainless steel single-bowl sink with Moen[®] Sleek polished chrome pull-down faucet
- 1/2 horsepower InSinkErator Badger[®] disposal

INCREDIBLE PRIMARY SUITE

- Spacious primary bedroom with walk-in closet
- Distinctive Shaker style maple wood cabinetry with melamine interiors and polished chrome hardware
- E-Stone countertops in Glacier White with 4" backsplash
- Kohler[®] white rectangular single-bowl undermount sink and polished-edge mirrors
- Spacious shower with E-Stone surrounds in Glacier White and semi-frameless glass enclosure
- Pro Flo[™] elongated commode

SECONDARY BATHS

- Distinctive Shaker style maple wood cabinetry with melamine interiors and polished chrome hardware
- Pro Flo[™] elongated commode
- Kohler[®] white rectangular undermount sink with polished-edge mirrors
- E-Stone countertops in Glacier White with 4" backsplash
- E-Stone tub and shower surrounds in Glacier White

POWDER BATH

- Sterling[®] Sacramento[®] freestanding sink with beveled oval mirror
- Pro Flo[™] elongated commode

ENERGY EFFICIENCY & HIGHLIGHTS

- Fully drywalled garage with automatic garage door opener and two transmitters
- White Decora[®] rocker light switches throughout
- IDevice Smart Bridge lighting dimmer switches
- Convenient USB port in kitchen
- Standard solar lease – option to purchase
- Electric car charger prep in garage
- Smoke and carbon monoxide detectors for peace of mind
- Flat-screen TV prep at great room media wall
- 220V power to supply to dryer
- Kwikset[®] smart lock at entry door in Iron Black
- Honeywell[®] programmable smart thermostat
- Dual-zone HVAC system
- Energy-efficient Navien[®] tankless water heater
- Pre-plumbed for ice maker
- Structured wiring package with telephone, cable television and data (Cat 6/RG-6 quad, high-speed Ethernet) at select locations
- Apple[®] HomePod mini[™]
- Full-wrap, profile rain gutters with 2" round downspout
- Dual-glazed windows for energy efficiency
- REME HALO[®] in-duct air purifier
- LiveFlex[®] opportunities (see sales counselor for details)

HIGH PERFORMANCE HOMES



Enhancing your home's comfort and convenience while saving money and preserving natural resources.

- Home automation supported by Apple[®] including eero Pro 6 whole house wifi system
- Energy savings
- Sustainability
- Healthy lifestyle features