

**L/NDSEA<sup>®</sup>**  
**HOMES**  
*Live in your element<sup>®</sup>*

ellis

townsend

kinbridge

hartwell





## hartwell | at Ellis

Hartwell is your place to make memories and grow with family-sized homes offering 2,297 to 3,733 square feet, up to six bedrooms and four bathrooms. Inspired living takes shape in these single-family homes with California rooms, multigenerational suites and single-story living options for maximum convenience and an ultimate living experience.



YOUR *place*  
TO MAKE  
*memories*  
GROW





ELEVATION 11A (MODELED)

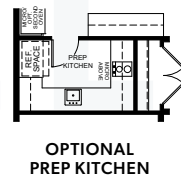
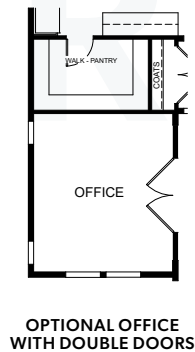
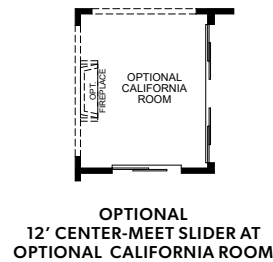
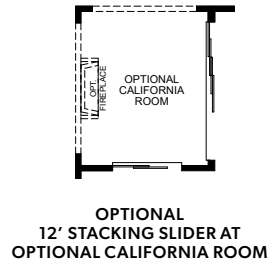


ELEVATION 11B

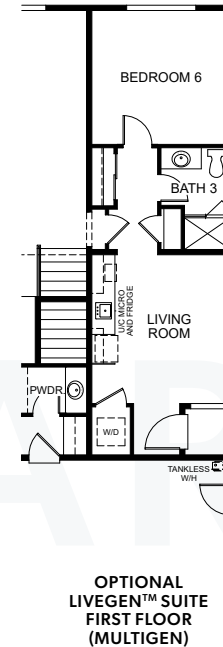
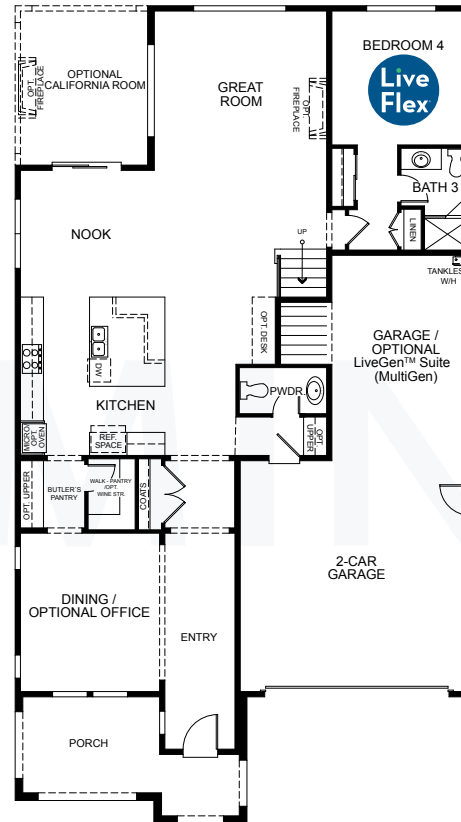


ELEVATION 11C

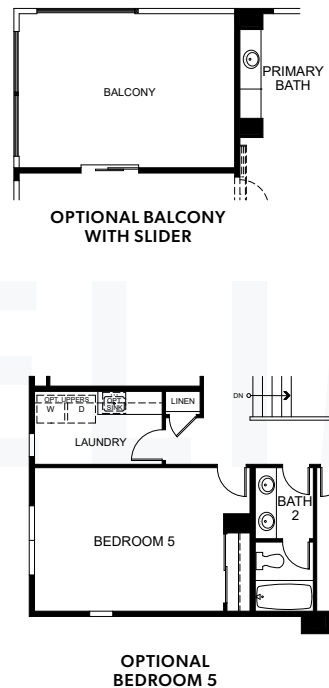




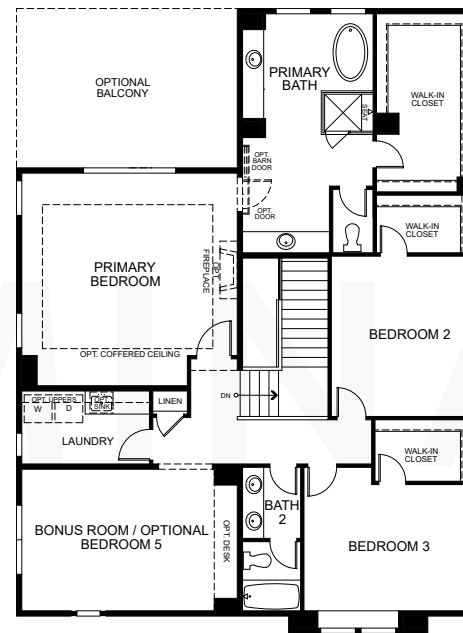
## OPTIONS



## OPTIONS



OPTIONS



SECOND FLOOR

## LUXURY LIVING

- Stylish exterior designs and spacious floor plans with included bonus rooms per plan
- Optional outdoor rooms for indoor-outdoor living
- Community parks with unrivaled amenities, dog park and planned shopping center
- Planned on-site K-8 school in the highly acclaimed Jefferson School District
- Planned on-site Serpa Aquatic Park with competition pool and family activities

## DESIGNER INTERIORS

- Impressive 8' exterior doors
- 2-1/4" door casings and 5-1/4" baseboards
- Kwikset<sup>®</sup> hardware in Iron Black at entry and polished chrome at interior doors
- Shaw<sup>®</sup> Optimum vinyl plank flooring at entry, primary bath, secondary bathrooms and laundry
- Choice Shaw<sup>®</sup> carpeting selections for stairs, primary bedroom and walk-in closet, landings and secondary bedrooms and closet
- Premium Kelly-Moore<sup>®</sup> paint
- Staircase with paint-grade vertical balusters and newel posts
- LED lighting throughout

## INSPIRING KITCHEN

- 36" Bertazzoni<sup>®</sup> stainless steel gas range with five burners and undermount hood
- Stainless steel multi-cycle Bertazzoni<sup>®</sup> dishwasher
- Built-in stainless steel Bertazzoni<sup>®</sup> microwave
- Optional second Bertazzoni<sup>®</sup> oven in stainless steel finish
- Distinctive Shaker style maple wood kitchen cabinetry with melamine interiors

- Daltile<sup>®</sup> quartz countertops with 6" backsplash throughout and full backsplash at range
- LED lighting and under-cabinet task lighting
- Sterling<sup>®</sup> Ludington<sup>®</sup> stainless steel single-bowl sink with Moen<sup>®</sup> Sleek polished chrome pull-down faucet
- 1/2 horsepower InSinkErator Badger<sup>®</sup> disposal

## INCREDIBLE PRIMARY SUITE

- Spacious primary bedroom with walk-in closet
- Distinctive Shaker style maple wood cabinetry with melamine interiors and polished chrome hardware
- E-Stone countertops in Glacier White with 4" backsplash
- Kohler<sup>®</sup> white rectangular single-bowl undermount sink and polished-edge mirrors
- Spacious shower with E-Stone surrounds in Glacier White and semi-frameless glass enclosure
- Pro Flo<sup>™</sup> elongated commode

## SECONDARY BATHS

- Distinctive Shaker style maple wood cabinetry with melamine interiors and polished chrome hardware
- Pro Flo<sup>™</sup> elongated commode
- Kohler<sup>®</sup> white rectangular undermount sink with polished-edge mirrors
- E-Stone countertops in Glacier White with 4" backsplash
- E-Stone tub and shower surrounds in Glacier White

## POWDER BATH

- Sterling<sup>®</sup> Sacramento<sup>®</sup> freestanding sink with beveled oval mirror
- Pro Flo<sup>™</sup> elongated commode

## ENERGY EFFICIENCY & HIGHLIGHTS

- Fully drywalled garage with automatic garage door opener and two transmitters
- White Decora<sup>®</sup> rocker light switches throughout
- IDevice Smart Bridge lighting dimmer switches
- Convenient USB port in kitchen
- Standard solar lease – option to purchase
- Electric car charger prep in garage
- Smoke and carbon monoxide detectors for peace of mind
- Flat-screen TV prep at great room media wall
- 220V power to supply to dryer
- Kwikset<sup>®</sup> smart lock at entry door in Iron Black
- Honeywell<sup>®</sup> programmable smart thermostat
- Dual-zone HVAC system
- Energy-efficient Navien<sup>®</sup> tankless water heater
- Pre-plumbed for ice maker
- Structured wiring package with telephone, cable television and data (Cat 6/RG-6 quad, high-speed Ethernet) at select locations
- Apple<sup>®</sup> HomePod mini<sup>™</sup>
- Full-wrap, profile rain gutters with 2" round downspout
- Dual-glazed windows for energy efficiency
- REME HALO<sup>®</sup> in-duct air purifier
- LiveFlex<sup>®</sup> opportunities (see sales counselor for details)

## HIGH PERFORMANCE HOMES



Enhancing your home's comfort and convenience while saving money and preserving natural resources.

- Home automation supported by Apple<sup>®</sup> including eero Pro 6 whole house wifi system
- Energy savings
- Sustainability
- Healthy lifestyle features