

L/NDSEA[®]
HOMES
Live in your element[®]

ellis

townsend

kinbridge

hartwell





hartwell | at Ellis

Hartwell is your place to make memories and grow with family-sized homes offering 2,297 to 3,733 square feet, up to six bedrooms and four bathrooms. Inspired living takes shape in these single-family homes with California rooms, multigenerational suites and single-story living options for maximum convenience and an ultimate living experience.



YOUR *place*
TO MAKE
memories
GROW





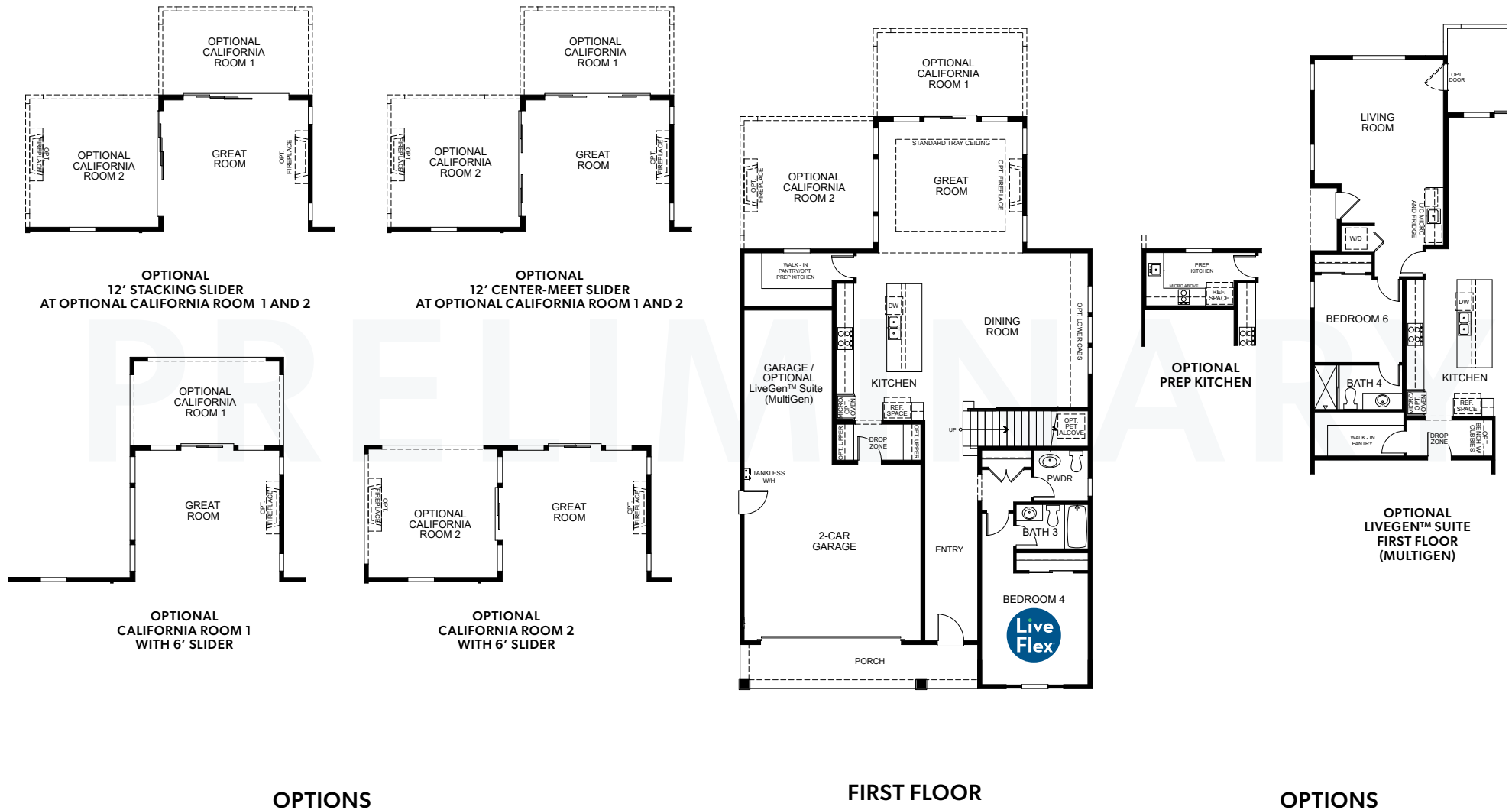
ELEVATION 10A

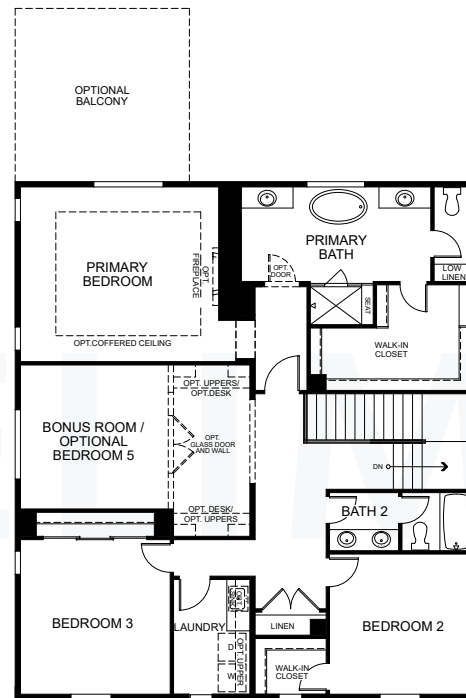


ELEVATION 10B

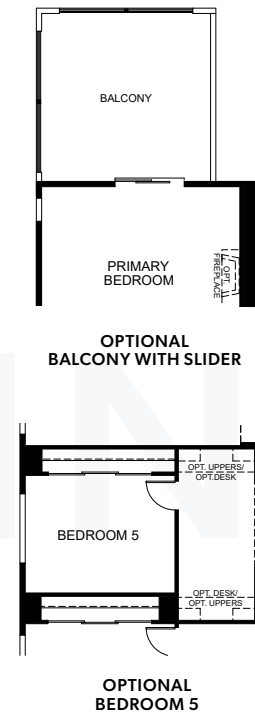


ELEVATION 10C (MODELED)





SECOND FLOOR



OPTIONS

LUXURY LIVING

- Stylish exterior designs and spacious floor plans with included bonus rooms per plan
- Optional outdoor rooms for indoor-outdoor living
- Community parks with unrivaled amenities, dog park and planned shopping center
- Planned on-site K-8 school in the highly acclaimed Jefferson School District
- Planned on-site Serpa Aquatic Park with competition pool and family activities

DESIGNER INTERIORS

- Impressive 8' exterior doors
- 2-1/4" door casings and 5-1/4" baseboards
- Kwikset[®] hardware in Iron Black at entry and polished chrome at interior doors
- Shaw[®] Optimum vinyl plank flooring at entry, primary bath, secondary bathrooms and laundry
- Choice Shaw[®] carpeting selections for stairs, primary bedroom and walk-in closet, landings and secondary bedrooms and closet
- Premium Kelly-Moore[®] paint
- Staircase with paint-grade vertical balusters and newel posts
- LED lighting throughout

INSPIRING KITCHEN

- 36" Bertazzoni[®] stainless steel gas range with five burners and undermount hood
- Stainless steel multi-cycle Bertazzoni[®] dishwasher
- Built-in stainless steel Bertazzoni[®] microwave
- Optional second Bertazzoni[®] oven in stainless steel finish
- Distinctive Shaker style maple wood kitchen cabinetry with melamine interiors

- Daltile[®] quartz countertops with 6" backsplash throughout and full backsplash at range
- LED lighting and under-cabinet task lighting
- Sterling[®] Ludington[®] stainless steel single-bowl sink with Moen[®] Sleek polished chrome pull-down faucet
- 1/2 horsepower InSinkErator Badger[®] disposal

INCREDIBLE PRIMARY SUITE

- Spacious primary bedroom with walk-in closet
- Distinctive Shaker style maple wood cabinetry with melamine interiors and polished chrome hardware
- E-Stone countertops in Glacier White with 4" backsplash
- Kohler[®] white rectangular single-bowl undermount sink and polished-edge mirrors
- Spacious shower with E-Stone surrounds in Glacier White and semi-frameless glass enclosure
- Pro Flo[™] elongated commode

SECONDARY BATHS

- Distinctive Shaker style maple wood cabinetry with melamine interiors and polished chrome hardware
- Pro Flo[™] elongated commode
- Kohler[®] white rectangular undermount sink with polished-edge mirrors
- E-Stone countertops in Glacier White with 4" backsplash
- E-Stone tub and shower surrounds in Glacier White

POWDER BATH

- Sterling[®] Sacramento[®] freestanding sink with beveled oval mirror
- Pro Flo[™] elongated commode

ENERGY EFFICIENCY & HIGHLIGHTS

- Fully drywalled garage with automatic garage door opener and two transmitters
- White Decora[®] rocker light switches throughout
- IDevice Smart Bridge lighting dimmer switches
- Convenient USB port in kitchen
- Standard solar lease – option to purchase
- Electric car charger prep in garage
- Smoke and carbon monoxide detectors for peace of mind
- Flat-screen TV prep at great room media wall
- 220V power to supply to dryer
- Kwikset[®] smart lock at entry door in Iron Black
- Honeywell[®] programmable smart thermostat
- Dual-zone HVAC system
- Energy-efficient Navien[®] tankless water heater
- Pre-plumbed for ice maker
- Structured wiring package with telephone, cable television and data (Cat 6/RG-6 quad, high-speed Ethernet) at select locations
- Apple[®] HomePod mini[™]
- Full-wrap, profile rain gutters with 2" round downspout
- Dual-glazed windows for energy efficiency
- REME HALO[®] in-duct air purifier
- LiveFlex[®] opportunities (see sales counselor for details)

HIGH PERFORMANCE HOMES



Enhancing your home's comfort and convenience while saving money and preserving natural resources.

- Home automation supported by Apple[®] including eero Pro 6 whole house wifi system
- Energy savings
- Sustainability
- Healthy lifestyle features