

L/NDSEA[®]
HOMES
Live in your element[®]

ellis

townsend

kinbridge

hartwell



© 2022 LANDSEA HOMES CORPORATION. LANDSEA®, LIVE IN YOUR ELEMENT® and LIVEFLEX® ARE FEDERALLY REGISTERED TRADEMARKS OF LANDSEA. BEDROOM(S) MARKED WITH LIVEFLEX® ARE ELIGIBLE FOR THE LIVEFLEX OPTIONAL PROGRAM FOR AN ADDITIONAL COST. YOU MAY SELECT ONE (1) BEDROOM MARKED WITH LIVEFLEX FOR THE PROGRAM AND PICK YOUR PREFERRED PACKAGE OF OPTIONS FOR THAT ROOM. PLANS, TERMS, PRICING, SQUARE FOOTAGES, PRODUCT INFORMATION, FEATURES, PROMOTIONS, LIVEFLEX OPTIONS, AMENITIES AND COMMUNITY/NEIGHBORHOOD INFORMATION ARE SUBJECT TO CHANGE WITHOUT NOTICE OR OBLIGATION. PHOTOGRAPHS, RENDERINGS, VIRTUAL TOURS AND FLOOR PLANS ARE FOR REPRESENTATIONAL PURPOSES ONLY AND MAY NOT REFLECT THE EXACT FEATURES OR DIMENSIONS OF YOUR HOME OR LIVEFLEX OPTIONS. MODELS DO NOT REFLECT RACIAL OR OTHER PREFERENCES. HOMES SHOWN DO NOT REPRESENT ACTUAL HOMESITES. SQUARE FOOTAGES ARE APPROXIMATE. LIVEFLEX PROGRAM AND SOME FEATURES OR OPTIONS SHOWN MAY NOT BE OFFERED IN YOUR COMMUNITY. MODELS DISPLAY DECORATOR ITEMS AND FURNITURE THAT ARE NOT AVAILABLE FOR PURCHASE. PLEASE SEE THE ACTUAL PURCHASE AGREEMENT FOR ADDITIONAL INFORMATION, DISCLOSURES AND DISCLAIMERS RELATING TO YOUR HOME, ITS FEATURES AND YOUR LIVEFLEX OPTIONS. INDIVIDUAL ENERGY COSTS AND SAVINGS MAY VARY. LANDSEA HOMES DOES NOT GUARANTEE ANY SPECIFIC LEVEL OF ENERGY COSTS OR SAVINGS. ALL RIGHTS RESERVED AND STRICTLY ENFORCED. THIS IS NOT AN OFFERING WHERE PROHIBITED BY LAW. NO INFORMATION CONTAINED HEREIN SHALL BE DEEMED TO CONSTITUTE A REPRESENTATION OR WARRANTY OF ANY KIND. PLEASE CONSULT A LANDSEA HOMES SALES REPRESENTATIVE FOR DETAILS. LANDSEA REAL ESTATE, INC. CA DRE LICENSE #02030520.



kinbridge | at Ellis

Family living is in clear view at Kinbridge—vibrant and alive with spacious single-family homes featuring four floor plans. This collection offers a fresh take on living and growing, offering 2,382 to 2,894 square feet of airy living space plus optional home offices, California rooms and multigenerational suites so every family member can have a space all their own.





ELEVATION 5A

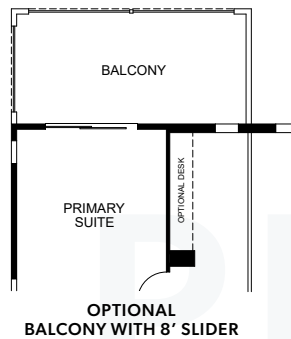


ELEVATION 5B

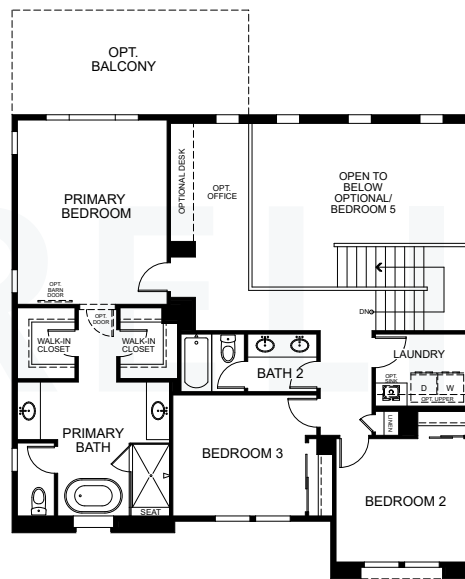


ELEVATION 5D

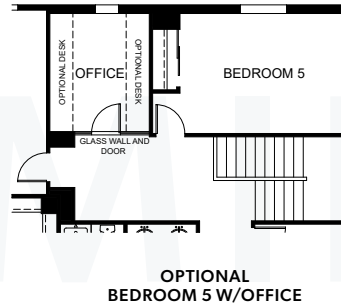
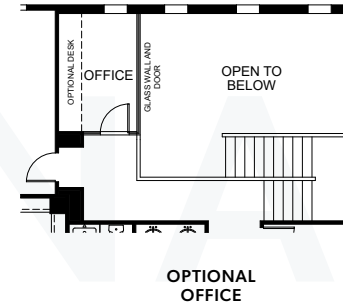
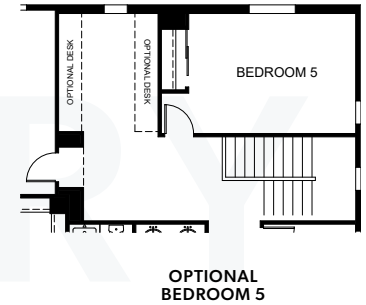




OPTIONS



SECOND FLOOR

OPTIONAL
BEDROOM 5 W/OFFICEOPTIONAL
OFFICEOPTIONAL
BEDROOM 5

OPTIONS



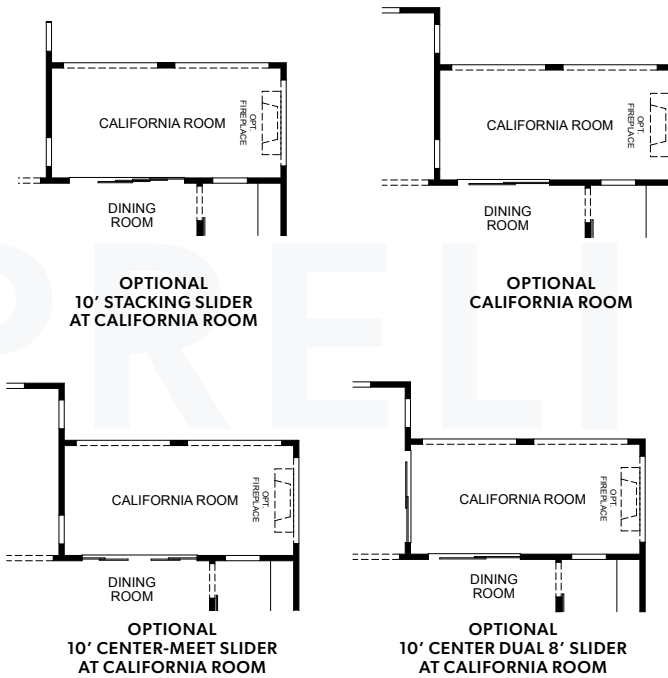
ELEVATION 6A



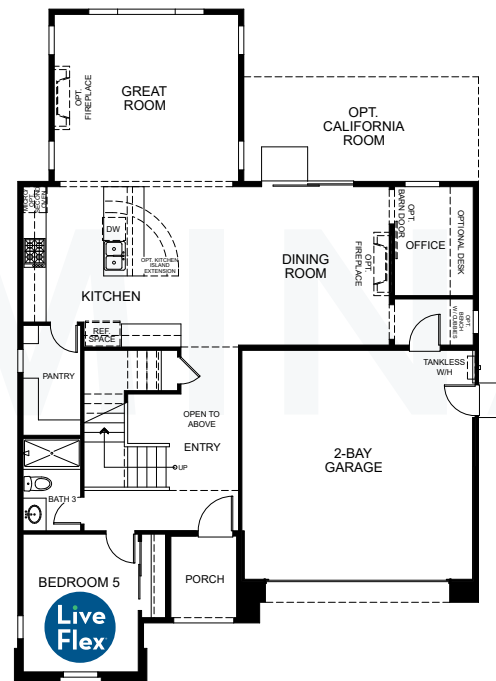
ELEVATION 6B



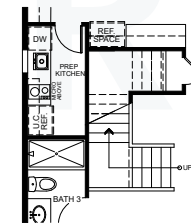
ELEVATION 6C (MODELED)



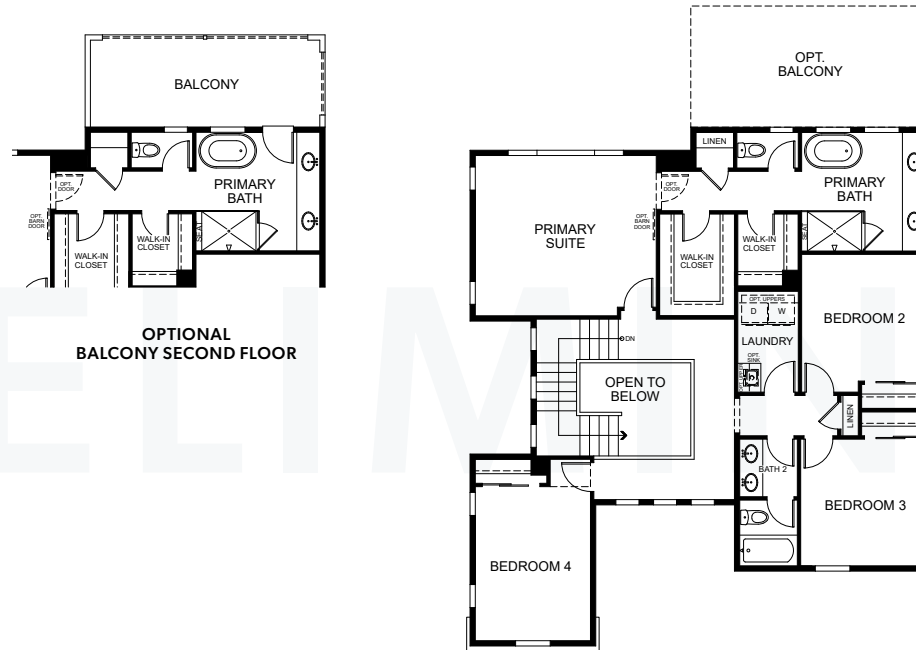
OPTIONS



FIRST FLOOR

OPTIONAL
PREP KITCHEN

OPTIONS



OPTIONS

SECOND FLOOR



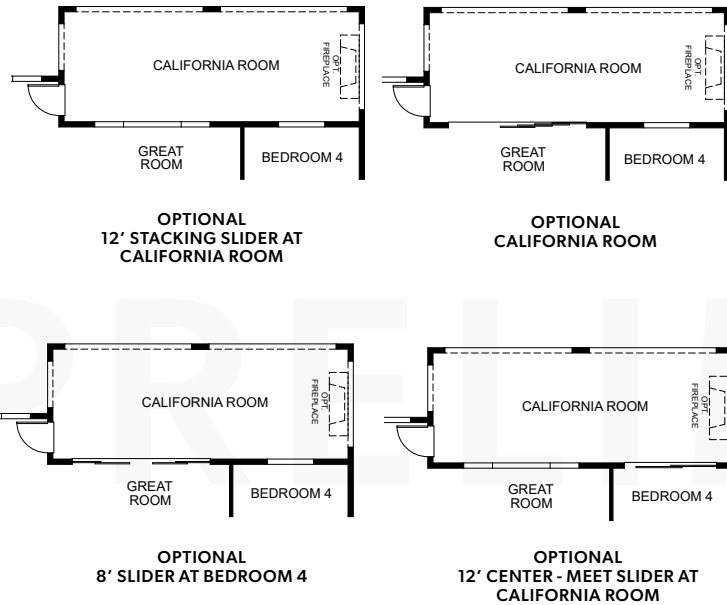
ELEVATION 7A



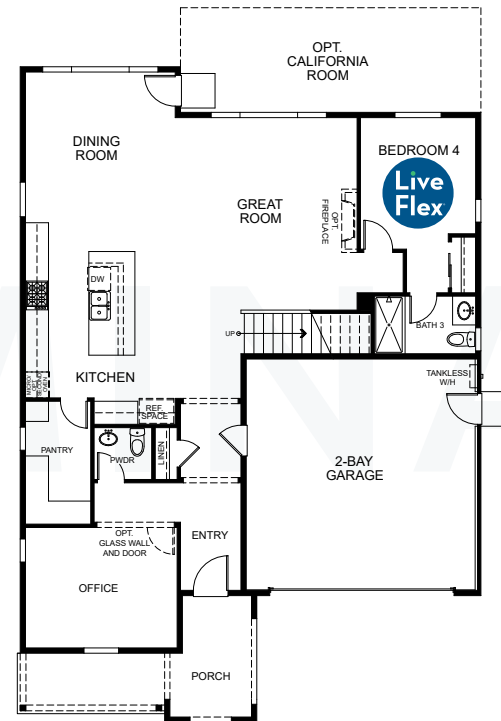
ELEVATION 7B (MODELED)



ELEVATION 7D



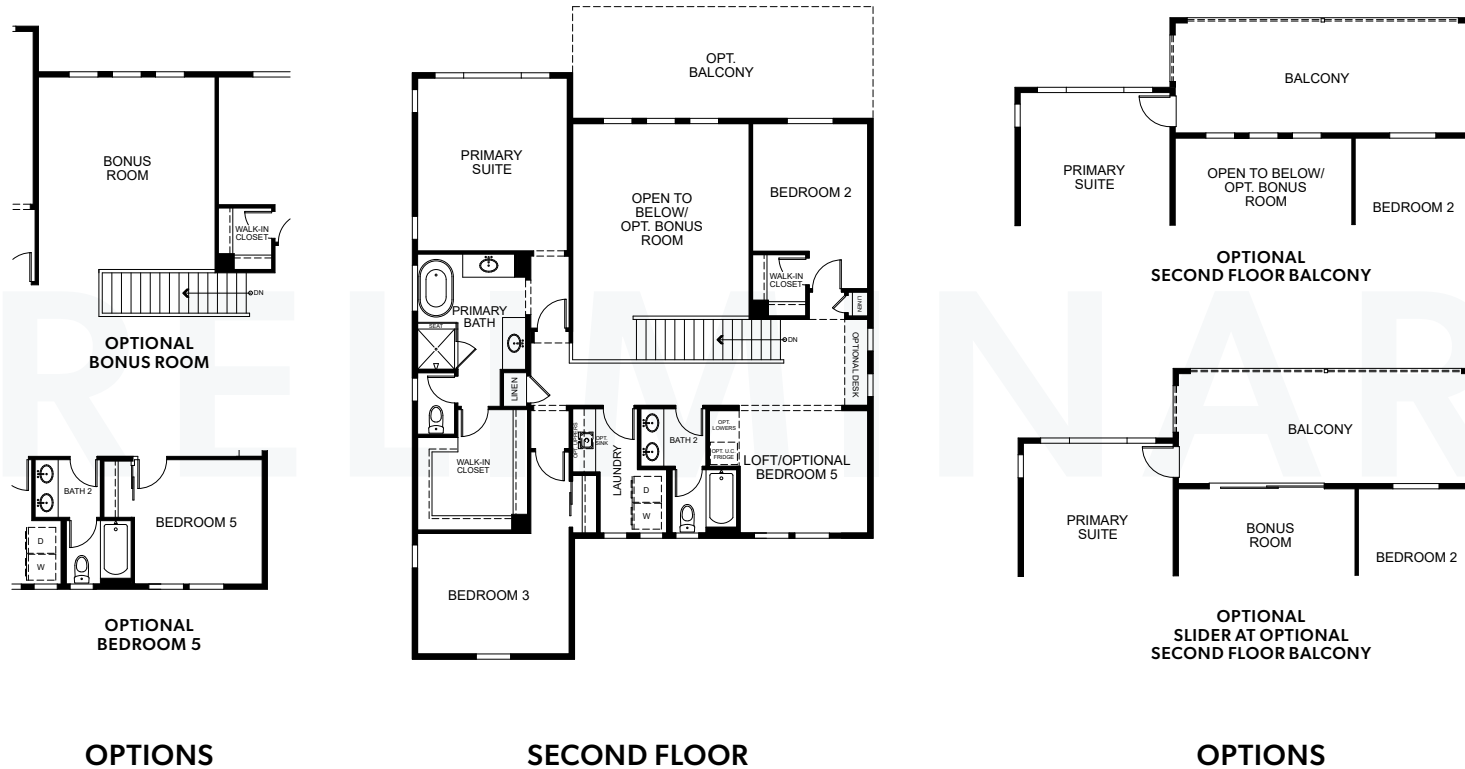
OPTIONS



FIRST FLOOR

OPTIONAL
PREP KITCHEN

OPTIONS





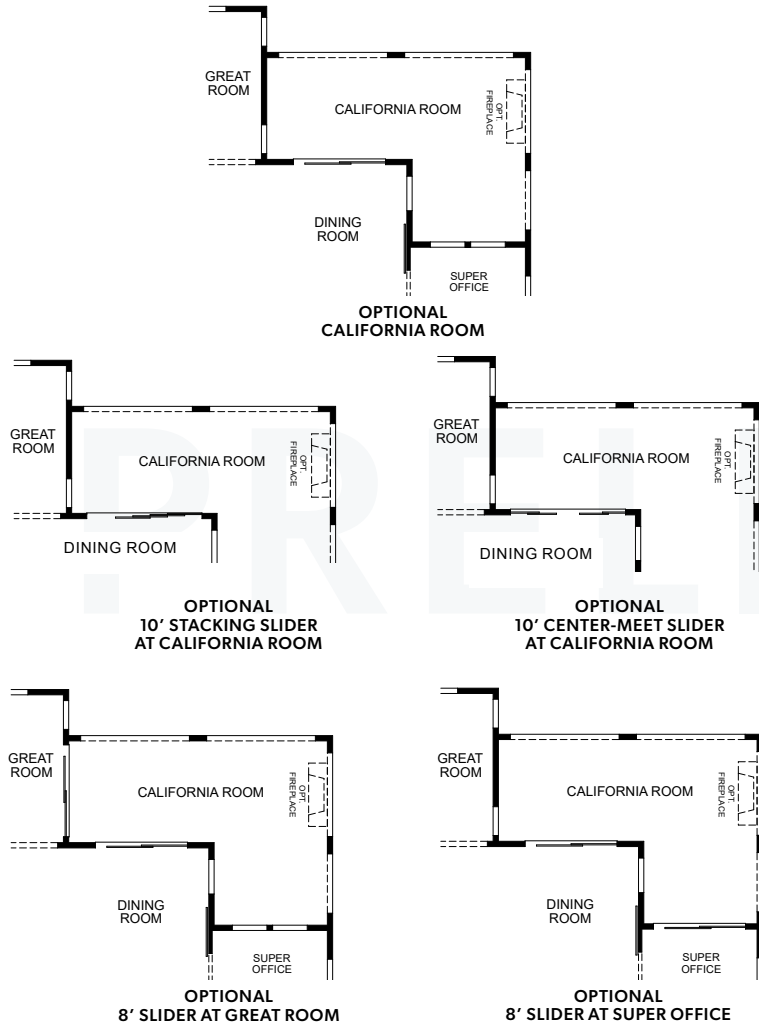
ELEVATION 8A (MODELED)



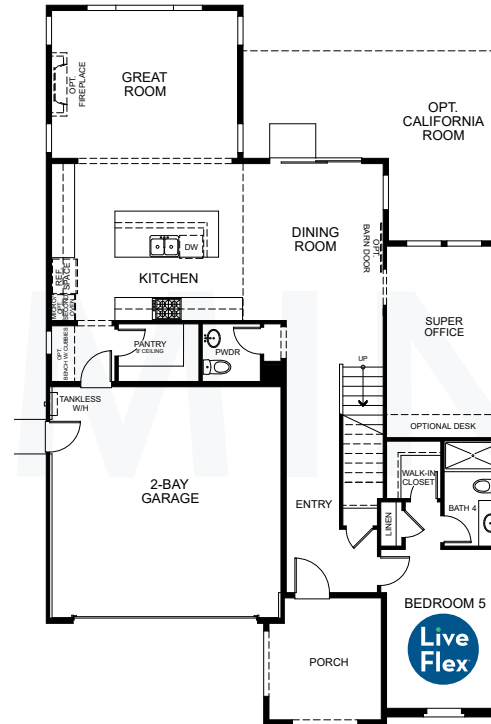
ELEVATION 8B



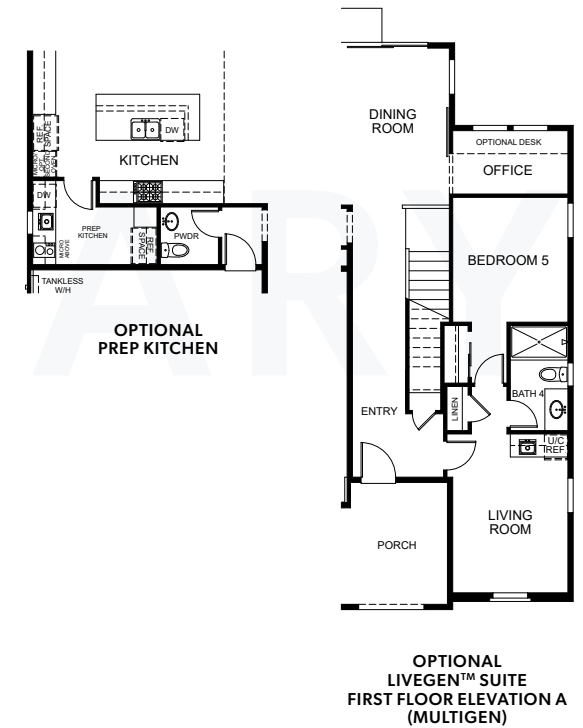
ELEVATION 8C



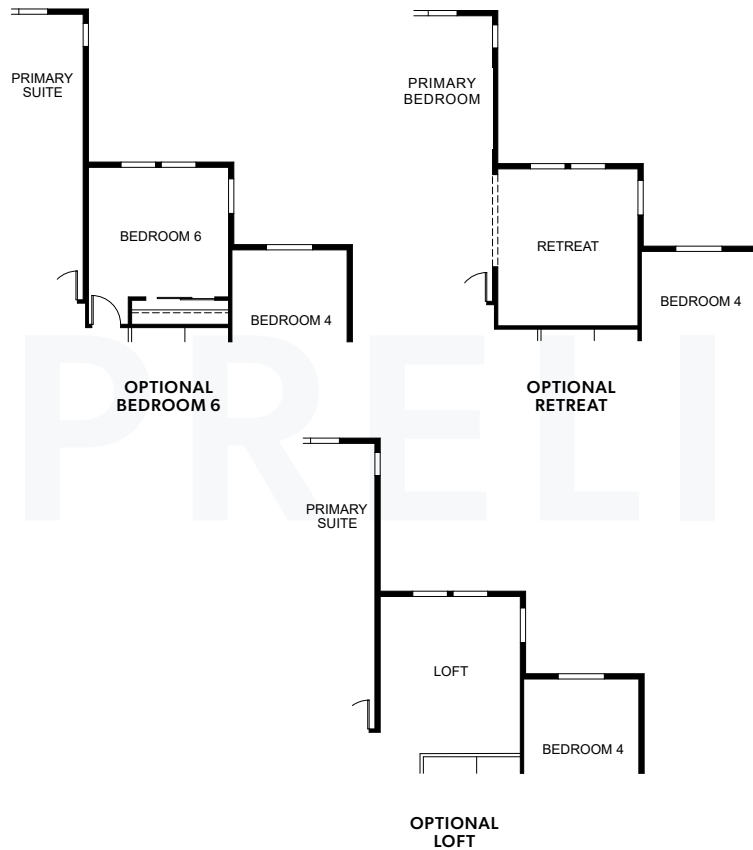
OPTIONS



FIRST FLOOR



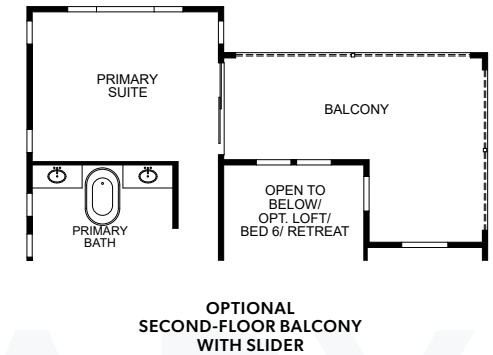
OPTIONS



OPTIONS



SECOND FLOOR



OPTIONS

LUXURY LIVING

- Striking European Country, Farmhouse Victorian, Revival and Mediterranean Revival architectural styles
- Stylish exterior designs and spacious floor plans with included home office space per plan
- Optional California rooms for indoor-outdoor living
- Community parks with unrivaled amenities, dog park and planned shopping center
- Planned on-site K-8 school in the highly acclaimed Jefferson School District
- Planned on-site Serpa Aquatic Park with competition pool and family activities

DESIGNER INTERIORS

- Impressive 8' exterior doors
- 2-1/4" door casings and 5-1/4" baseboards
- Kwikset® hardware in Iron Black at entry and polished chrome at interior doors
- Shaw® Optimum vinyl plank flooring at entry, primary bath, secondary bathrooms and laundry
- Choice Shaw® carpeting selections for stairs, primary bedroom and walk-in closet, landings and secondary bedrooms and closet
- Premium Kelly-Moore® paint
- Staircase with optional paint-grade vertical balusters and newel posts
- LED lighting throughout

INSPIRING KITCHEN

- LG® stainless steel slide-in range with five burners and undermount hood
- Stainless steel multi-cycle LG® dishwasher
- Built-in stainless steel LG® microwave
- Optional second LG® oven in stainless steel finish

- Distinctive Shaker style maple wood kitchen cabinetry with melamine interiors and polished chrome hardware
- Daltile® quartz countertops with 6" backsplash throughout and full backsplash at range
- LED lighting and optional under-cabinet task lighting
- Sterling® McAllister® stainless steel double-bowl sink with Moen® Sleek pull-down faucet
- 1/2 horsepower InSinkErator Badger® disposal

INCREDIBLE PRIMARY SUITE

- Spacious primary bedroom with walk-in closet
- Distinctive Shaker style maple wood cabinetry with melamine interiors and polished chrome hardware
- E-Stone countertops in Glacier White with 4" backsplash
- Kohler Caxton® rectangular sink and polished-edge mirrors
- Spacious shower with E-Stone surrounds in Glacier White and framed glass enclosure
- Pro Flo™ elongated commode

SECONDARY BATHS

- Distinctive Shaker style maple wood cabinetry with melamine interiors and polished chrome hardware
- Pro Flo™ elongated commode
- Kohler Caxton® rectangular sink with polished-edge mirrors
- E-Stone countertops in Glacier White with 4" backsplash
- E-Stone tub and shower surrounds in Glacier White

POWDER BATH

- Sterling® Sacramento® freestanding sink with beveled oval mirror
- Pro Flo™ elongated commode

ENERGY EFFICIENCY & HIGHLIGHTS

- Metal sectional roll-up garage door (per plan) with optional transmitters
- White Decora® rocker light switches throughout
- iDevice Smart Bridge lighting dimmer switches at designed locations
- Standard solar lease – option to purchase
- Electric car charger prep in garage
- Smoke and carbon monoxide detectors for peace of mind
- Flat-screen TV prep at great room media wall
- 220V power to supply to dryer
- Kwikset® smart lock at entry door in Iron Black
- Honeywell® programmable smart thermostat
- Dual-zone HVAC system
- Energy-efficient Navien® tankless water heater
- Pre-plumbed for ice maker
- Structured wiring package with telephone, cable television and data (Cat 6/RG-6 quad, high-speed Ethernet) at select locations
- Apple® HomePod mini™
- Full-wrap, profile rain gutters with 2" round downspout
- Dual-glazed windows for energy efficiency
- REME HALO® in-duct air purifier
- LiveFlex® opportunities (see sales counselor for details)

HIGH PERFORMANCE HOMES

Enhancing your home's comfort and convenience while saving money and preserving natural resources.

- Home automation supported by Apple® including eero Pro 6 whole house wifi system
- Energy savings