

L/NDSEA[®]
HOMES
Live in your element[®]

ellis

townsend

kinbridge

hartwell





hartwell | at Ellis

Hartwell is your place to make memories and grow with family-sized homes offering 2,297 to 3,733 square feet, up to six bedrooms and four bathrooms. Inspired living takes shape in these single-family homes with California rooms, multigenerational suites and single-story living options for maximum convenience and an ultimate living experience.

YOUR *place*
TO MAKE
memories
GROW





ELEVATION 9A – SINGLE-STORY



ELEVATION 9B – SINGLE-STORY



ELEVATION 9C – SINGLE-STORY



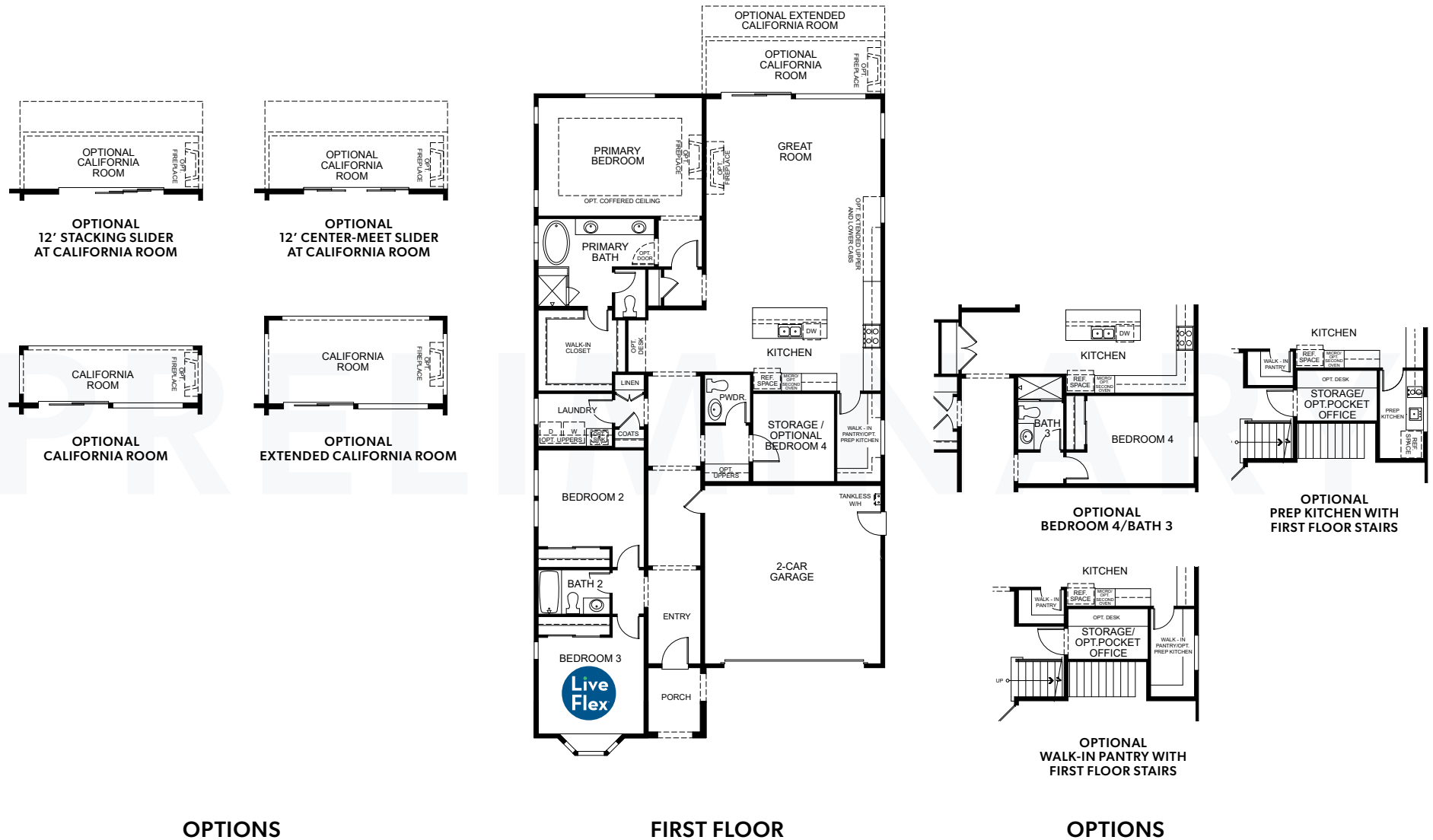
ELEVATION 9A – TWO-STORY



ELEVATION 9B – TWO-STORY (MODELED)



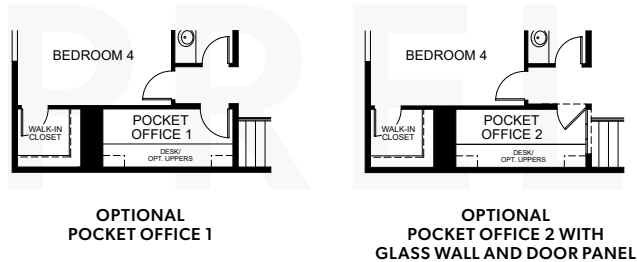
ELEVATION 9C – TWO-STORY



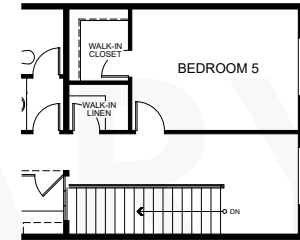
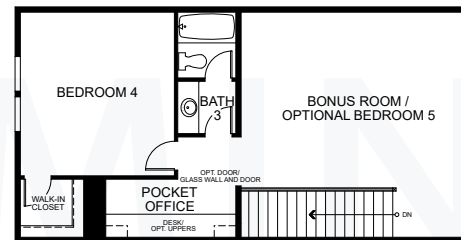
OPTIONS

FIRST FLOOR

OPTIONS



OPTIONS



OPTIONS



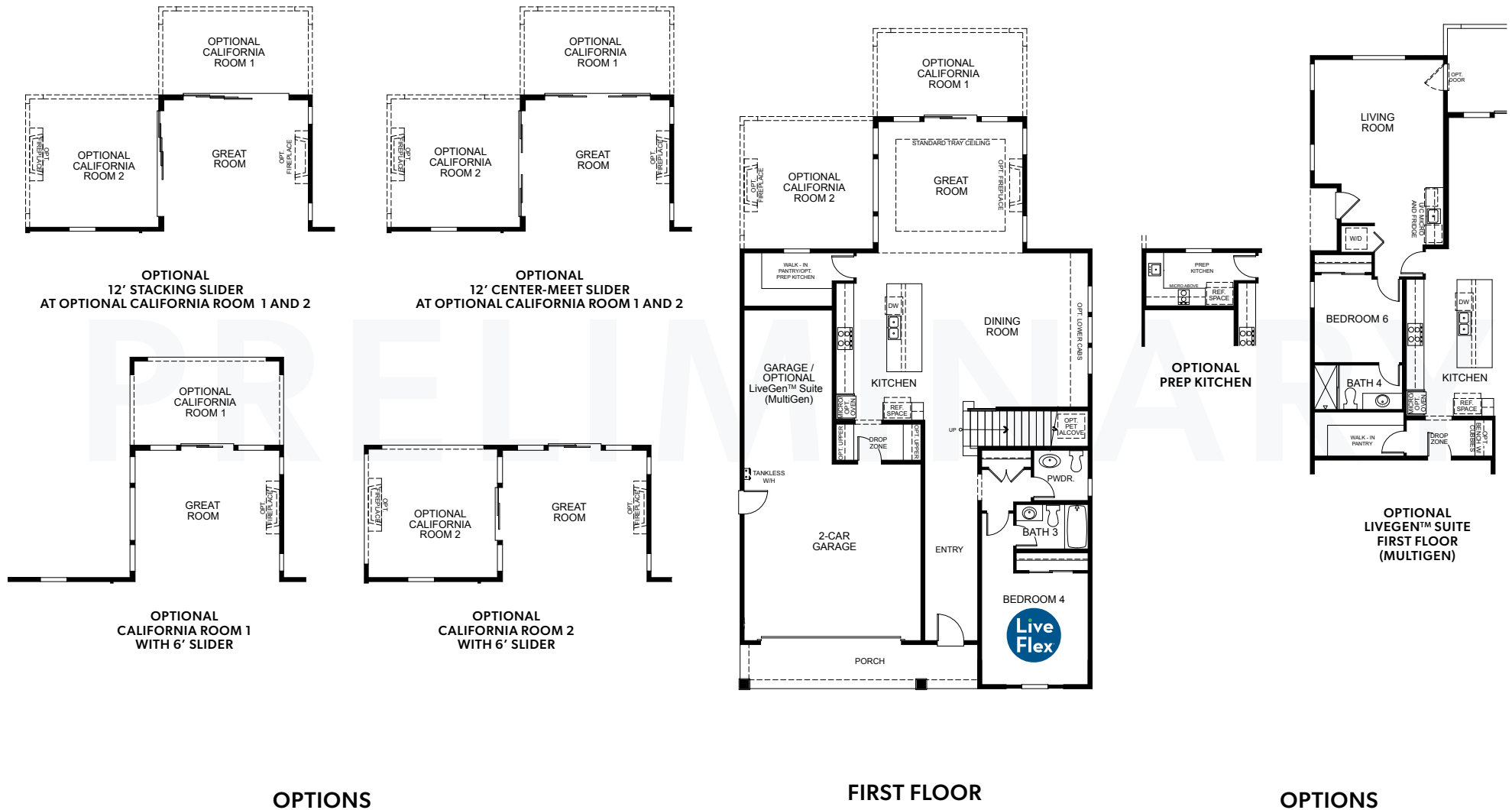
ELEVATION 10A

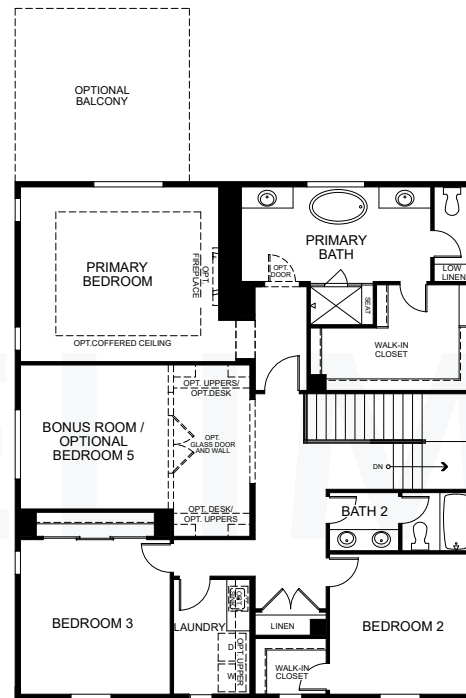


ELEVATION 10B

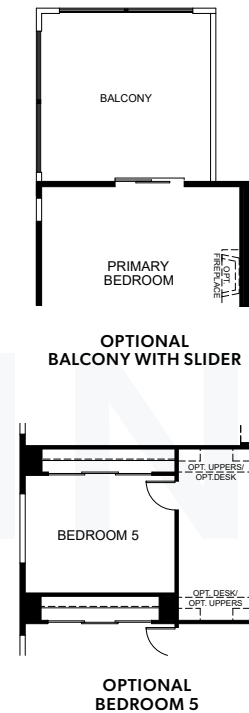


ELEVATION 10C (MODELED)





SECOND FLOOR



OPTIONS



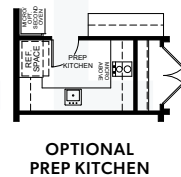
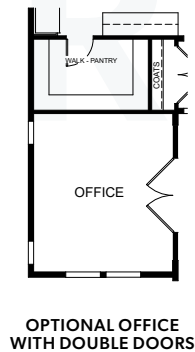
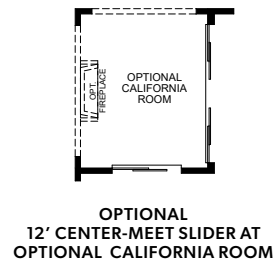
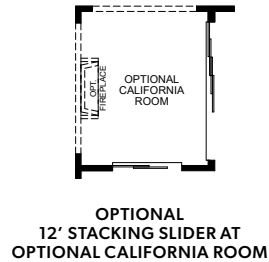
ELEVATION 11A (MODELED)



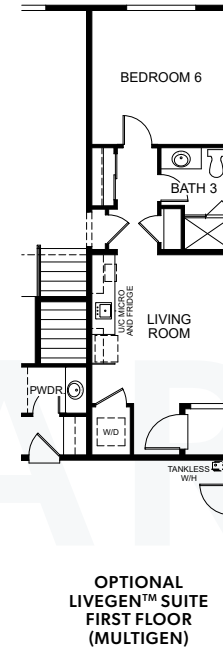
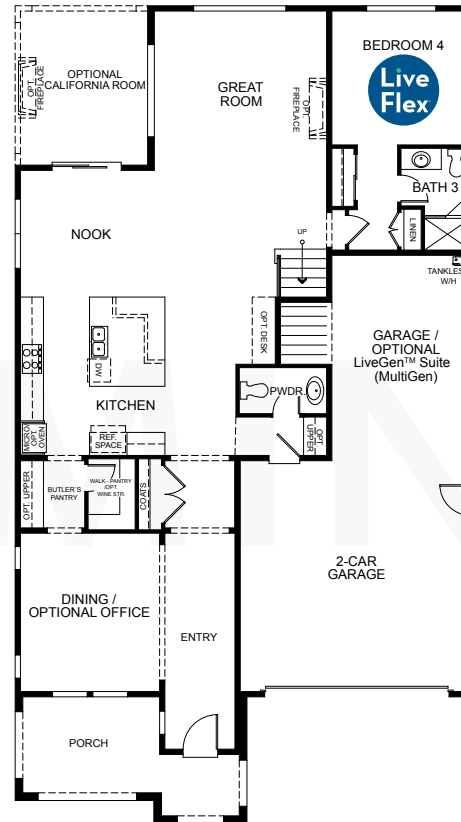
ELEVATION 11B



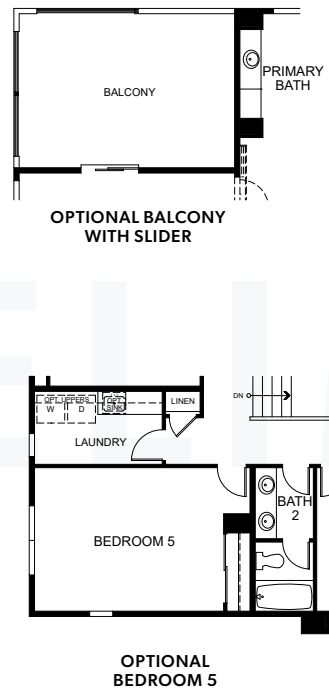
ELEVATION 11C



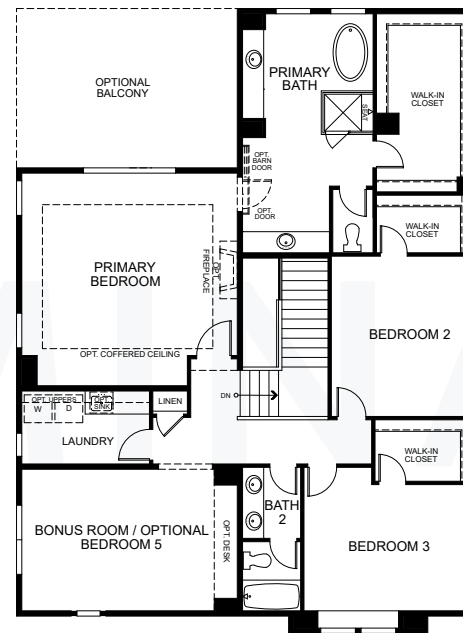
OPTIONS



OPTIONS



OPTIONS



SECOND FLOOR



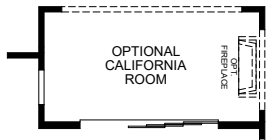
ELEVATION 12A



ELEVATION 12B (MODELED)



ELEVATION 12C



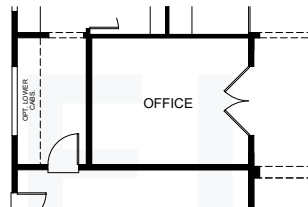
OPTIONAL
12' STACKING SLIDER
AT OPTIONAL CALIFORNIA ROOM



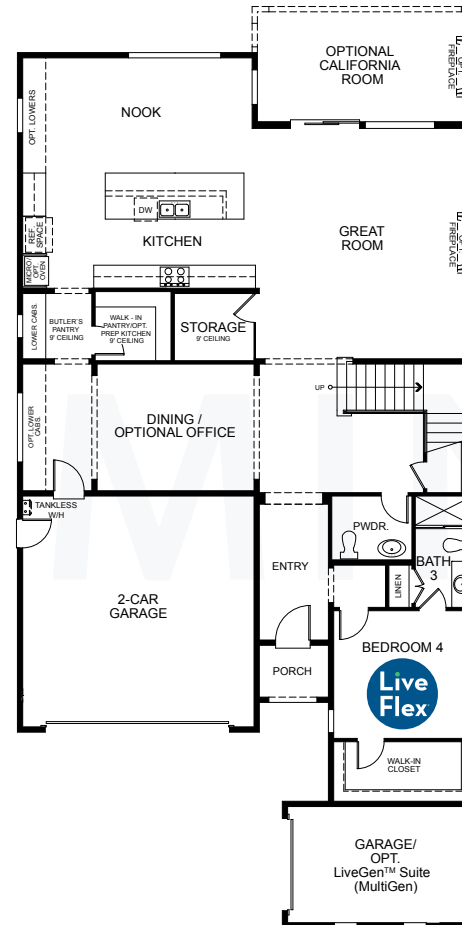
OPTIONAL
CALIFORNIA ROOM



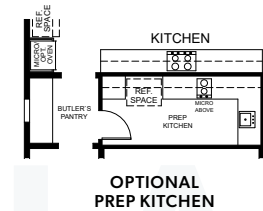
OPTIONAL
12' CENTER-MEET SLIDER
AT OPTIONAL CALIFORNIA ROOM



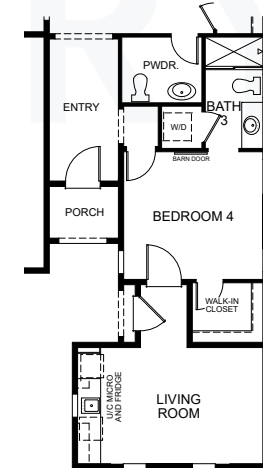
OPTIONAL
OFFICE



FIRST FLOOR



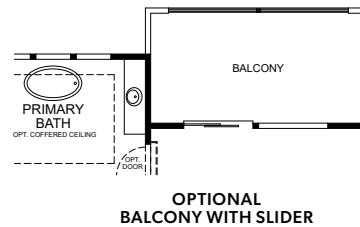
OPTIONAL
PREP KITCHEN



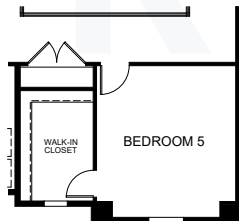
OPTIONAL
LIVEGEN™ SUITE
FIRST FLOOR
(MULTIGEN)

OPTIONS

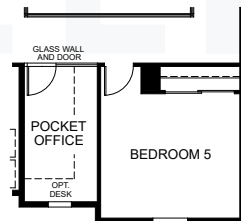
OPTIONS



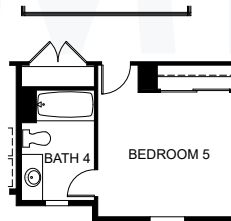
OPTIONAL
BALCONY WITH SLIDER



OPTIONAL
BEDROOM 5

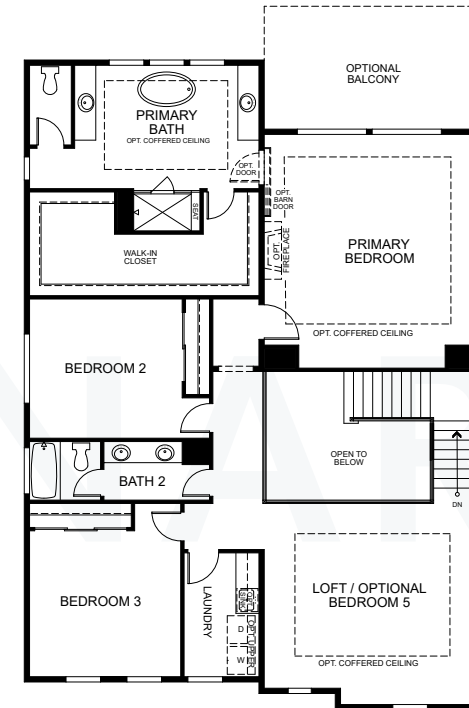


OPTIONAL
BEDROOM 5 AND POCKET OFFICE
WITH GLASS WALL AND DOOR



OPTIONAL
BEDROOM 5 WITH
BATH 4

OPTIONS



SECOND FLOOR

LUXURY LIVING

- Stylish exterior designs and spacious floor plans with included bonus rooms per plan
- Optional outdoor rooms for indoor-outdoor living
- Community parks with unrivaled amenities, dog park and planned shopping center
- Planned on-site K-8 school in the highly acclaimed Jefferson School District
- Planned on-site Serpa Aquatic Park with competition pool and family activities

DESIGNER INTERIORS

- Impressive 8' exterior doors
- 2-1/4" door casings and 5-1/4" baseboards
- Kwikset[®] hardware in Iron Black at entry and polished chrome at interior doors
- Shaw[®] Optimum vinyl plank flooring at entry, primary bath, secondary bathrooms and laundry
- Choice Shaw[®] carpeting selections for stairs, primary bedroom and walk-in closet, landings and secondary bedrooms and closet
- Premium Kelly-Moore[®] paint
- Staircase with paint-grade vertical balusters and newel posts
- LED lighting throughout

INSPIRING KITCHEN

- 36" Bertazzoni[®] stainless steel gas range with five burners and undermount hood
- Stainless steel multi-cycle Bertazzoni[®] dishwasher
- Built-in stainless steel Bertazzoni[®] microwave
- Optional second Bertazzoni[®] oven in stainless steel finish
- Distinctive Shaker style maple wood kitchen cabinetry with melamine interiors

- Daltile[®] quartz countertops with 6" backsplash throughout and full backsplash at range
- LED lighting and under-cabinet task lighting
- Sterling[®] Ludington[®] stainless steel single-bowl sink with Moen[®] Sleek polished chrome pull-down faucet
- 1/2 horsepower InSinkErator Badger[®] disposal

INCREDIBLE PRIMARY SUITE

- Spacious primary bedroom with walk-in closet
- Distinctive Shaker style maple wood cabinetry with melamine interiors and polished chrome hardware
- E-Stone countertops in Glacier White with 4" backsplash
- Kohler[®] white rectangular single-bowl undermount sink and polished-edge mirrors
- Spacious shower with E-Stone surrounds in Glacier White and semi-frameless glass enclosure
- Pro Flo[™] elongated commode

SECONDARY BATHS

- Distinctive Shaker style maple wood cabinetry with melamine interiors and polished chrome hardware
- Pro Flo[™] elongated commode
- Kohler[®] white rectangular undermount sink with polished-edge mirrors
- E-Stone countertops in Glacier White with 4" backsplash
- E-Stone tub and shower surrounds in Glacier White

POWDER BATH

- Sterling[®] Sacramento[®] freestanding sink with beveled oval mirror
- Pro Flo[™] elongated commode

ENERGY EFFICIENCY & HIGHLIGHTS

- Fully drywalled garage with automatic garage door opener and two transmitters
- White Decora[®] rocker light switches throughout
- IDevice Smart Bridge lighting dimmer switches
- Convenient USB port in kitchen
- Standard solar lease – option to purchase
- Electric car charger prep in garage
- Smoke and carbon monoxide detectors for peace of mind
- Flat-screen TV prep at great room media wall
- 220V power to supply to dryer
- Kwikset[®] smart lock at entry door in Iron Black
- Honeywell[®] programmable smart thermostat
- Dual-zone HVAC system
- Energy-efficient Navien[®] tankless water heater
- Pre-plumbed for ice maker
- Structured wiring package with telephone, cable television and data (Cat 6/RG-6 quad, high-speed Ethernet) at select locations
- Apple[®] HomePod mini[™]
- Full-wrap, profile rain gutters with 2" round downspout
- Dual-glazed windows for energy efficiency
- REME HALO[®] in-duct air purifier
- LiveFlex[®] opportunities (see sales counselor for details)

HIGH PERFORMANCE HOMES



Enhancing your home's comfort and convenience while saving money and preserving natural resources.

- Home automation supported by Apple[®] including eero Pro 6 whole house wifi system
- Energy savings
- Sustainability
- Healthy lifestyle features