

Destin

1,968 Square Feet • 4 Bedrooms • 2.5 Baths • 2-Car Garage



ELEVATION 1



ELEVATION 2



ELEVATION 3

©2022 Landsea Homes US Corporation. LANDSEA® and LIVE IN YOUR ELEMENT® are federally registered trademarks of Landsea or its licensors. Plans, pricing, product information, square footages, amenities and community/building information are subject to change without notice or obligation. Renderings, floor plans and furniture layouts are for representational purposes only and may not reflect the exact features or dimensions of your home. Homes shown do not represent actual homesites. Square footages are approximate. Some features and options shown may not be offered in your community/building. Please see the actual purchase agreement for additional information, disclosures and disclaimers relating to your home and its features. All rights reserved and strictly enforced. This is not an offering where prohibited by law. No information contained herein shall be deemed to constitute a representation or warranty of any kind. Please consult a Landsea Homes sales representative for details. CGC #1507971. MLOs and company are CA licensed by the Department of Business Oversight under the California Residential Mortgage Lending Act. CA #6039416 and 4131349 (dba NFM Consultants, Inc.). Branch NMLS #1490627. Branch licensing information: AZ 0121417. NFM, Inc. d/b/a NFM Lending. NFM, Inc. is licensed by AZ #0934973. For NFM, Inc.'s full agency and state licensing information, please visit www.nfmlending.com/licensing. NFM, Inc. NMLS #2893 (www.nmlsconsumeraccess.org). NFM, Inc. is not affiliated with, or an agent or division of, Landsea Homes, a governmental agency or depository institution. Copyright © 2022.

LANDSEA
HOMES
Live in your element®

NFM Lending
The Sandell Team

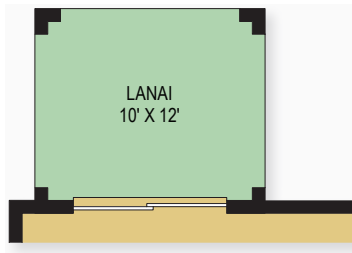
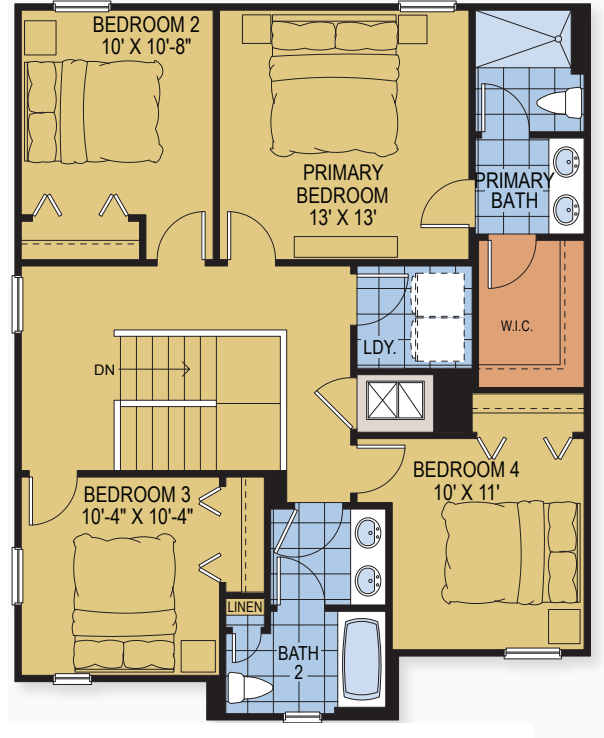
Destin

1,968 Square Feet • 4 Bedrooms • 2.5 Baths • 2-Car Garage

FIRST FLOOR



SECOND FLOOR



OPTIONAL COVERED LANAI

©2022 Landsea Homes US Corporation. LANDSEA® and LIVE IN YOUR ELEMENT® are federally registered trademarks of Landsea or its licensors. Plans, pricing, product information, square footages, amenities and community/building information are subject to change without notice or obligation. Renderings, floor plans and furniture layouts are for representational purposes only and may not reflect the exact features or dimensions of your home. Homes shown do not represent actual homesites. Square footages are approximate. Some features and options shown may not be offered in your community/building. Please see the actual purchase agreement for additional information, disclosures and disclaimers relating to your home and its features. All rights reserved and strictly enforced. This is not an offering where prohibited by law. No information contained herein shall be deemed to constitute a representation or warranty of any kind. Please consult a Landsea Homes sales representative for details. CGC #1507971. MLOs and company are CA licensed by the Department of Business Oversight under the California Residential Mortgage Lending Act. CA #6039416 and 4131349 (dba NFM Consultants, Inc.). Branch NMLS #1490627. Branch licensing information: AZ 0121417. NFM, Inc. d/b/a NFM Lending. NFM, Inc. is licensed by AZ #0934973. For NFM, Inc.'s full agency and state licensing information, please visit www.nfmlending.com/licensing. NFM, Inc. NMLS #2893 (www.nmlsconsumeraccess.org). NFM, Inc. is not affiliated with, or an agent or division of, Landsea Homes, a governmental agency or depository institution. Copyright © 2022. 🏠

LANDSEA
HOMES
Live in your element®

NFM Lending
The Sandell Team

Destin

1,968 Square Feet • 4 Bedrooms • 2.5 Baths • 2-Car Garage



ELEVATION 1 (SHOWN WITH OPTIONAL CLADDING)



ELEVATION 2 (SHOWN WITH OPTIONAL STONE)



ELEVATION 3 (SHOWN WITH OPTIONAL STONE)



ELEVATION 3 (SHOWN WITH OPTIONAL CLADDING)

©2022 Landsea Homes US Corporation. LANDSEA® and LIVE IN YOUR ELEMENT® are federally registered trademarks of Landsea or its licensors. Plans, pricing, product information, square footages, amenities and community/building information are subject to change without notice or obligation. Renderings, floor plans and furniture layouts are for representational purposes only and may not reflect the exact features or dimensions of your home. Homes shown do not represent actual homesites. Square footages are approximate. Some features and options shown may not be offered in your community/building. Please see the actual purchase agreement for additional information, disclosures and disclaimers relating to your home and its features. All rights reserved and strictly enforced. This is not an offering where prohibited by law. No information contained herein shall be deemed to constitute a representation or warranty of any kind. Please consult a Landsea Homes sales representative for details. CGC #1507971. MLOs and company are CA licensed by the Department of Business Oversight under the California Residential Mortgage Lending Act. CA #6039416 and 4131349 (dba NFM Consultants, Inc.). Branch NMLS #1490627. Branch licensing information: AZ 0121417. NFM, Inc. d/b/a NFM Lending. NFM, Inc. is licensed by AZ #0934973. For NFM, Inc.'s full agency and state licensing information, please visit www.nfmlending.com/licensing. NFM, Inc. NMLS #2893 (www.nmlsconsumeraccess.org). NFM, Inc. is not affiliated with, or an agent or division of, Landsea Homes, a governmental agency or depository institution. Copyright © 2022. 🏠

LANDSEA
HOMES
Live in your element®

NFM Lending
The Sandell Team