



Wildstar



**L/NDSEA<sup>®</sup>**  
**HOMES**  
*Live in your element™*

# COMMUNITY

## Information



### General Information

4785 Habitat Dr., North Fontana, CA 92336  
Duncan Canyon Rd. and Coyote Canyon Rd.  
(909) 345-0030  
Total Number of Homes: 78

### HOA Dues

Residents will be part of the Narra Hills Community Association HOA and will pay monthly dues for the maintenance of amenities and common areas, including the recreation center, landscaping and parks. Monthly dues will be \$192 at build-out.

### Amenities

- Gated Neighborhood
- Recreation Center
- Pool & Spa
- Kids' Play Area
- Dog Parks
- Pickleball
- Fire Pit Lounge

### Estimated Property Taxes

The estimated effective tax rate is approximately 1.95%.

### Preferred Lender

**LANDSEA® MORTGAGE**

Powered by NFM Lending

getapproved@landseamortgage.com  
(888) 577-5977

### Schools

#### Fontana Unified School District

Sierra Lakes Elementary School  
Wayne Ruble Middle School  
Summit High School

## Unique Features

- Gated Neighborhood
- High Performance Homes
- LiveFlex® Rooms
- Modern Architecture

4785 Habitat Dr., North Fontana, CA 92336 — Duncan Canyon Rd. & Coyote Canyon Rd.  
[www.landseahomes.com/southern-california/wildstar](http://www.landseahomes.com/southern-california/wildstar)

**LANDSEA®**  
**HOMES**  
*Live in your element™*

© 2025 Landsea Homes US Corporation. LANDSEA®, LIVE IN YOUR ELEMENT™ and LIVEFLEX™ are federally registered trademarks of Landsea. Bedroom(s) marked with LiveFlex™ are eligible for the LiveFlex optional program for an additional cost. You may select one (1) bedroom marked with LiveFlex for the program and pick your preferred package of options for that room. Plans, terms, pricing, square footage, product information, features, promotions, LiveFlex options, amenities and community/neighborhood information are subject to change without notice or obligation. Square footage is approximate. Home(s) shown may not represent actual homesite(s) for sale. Model(s) do(es) not display racial preference. Please see the actual purchase agreement for additional information, disclosures and disclaimers relating to your home, its features and your LiveFlex options. Individual energy costs and savings may vary. Landsea Homes does not guarantee any specific level of energy costs or savings. All rights reserved and strictly enforced. This is not an offering where prohibited by law. No information contained herein shall be deemed to constitute a representation or warranty of any kind. Please consult a Landsea Homes sales representative for details. Landsea Real Estate California, Inc. CA DRE license #02030520. 



# Included Features

## High Performance Homes

Enhancing your home's comfort and convenience while saving money and preserving natural resources.

- Home Automation
- Energy Savings
- Sustainability
- Healthy Lifestyle features



See HPH brochure for details

## Home Automation

- CAT 6 wiring
- Smart front door lock
- Wi-Fi thermostat
- Ecobee smart doorbell

## Energy Savings

- Dual-glazed windows per Title 24
- Rheem® Heat Pump Water Heater
- ENERGY STAR® certified dishwasher
- Energy-efficient LED disc lighting
- Energy-saving insulation in exterior walls and ceilings
- 5.27 kWh solar system with the Power Purchase Agreement (lease or purchase)
- High-efficiency plumbing fixtures
- Drought-tolerant landscaping in common areas
- EVCS electric vehicle future conduit

## Healthy Home

- Low-VOC paint throughout

## Exterior Features

- Mid-Century Modern, Modern Spanish and California Modern inspired architecture
- Designer-coordinated exterior color combinations
- Illuminated house number at garage and entry
- Two (2) hose bibbs
- One (1) gas stub at back of house
- Rain gutters at entry only (per plan)
- Insulated garage door with two (2) remote openers

## It's in the Details

- 8' contemporary entry doors
- 9' ceilings
- Two-panel interior doors with Kwikset® Casey levers in Satin Nickel
- 3-1/2" baseboards throughout with 2-1/4" door casing
- Sherwin-Williams® paint in Swiss Coffee
- Shaw® carpeting in choice of four colors
- 12" x 12" Daltile® AR Choice flooring in select locations in choice of three colors
- Vinyl flooring in select locations in choice of three colors
- White thermofoil Shaker-style cabinets in secondary bathrooms
- Secondary bathrooms include engineered marble counters with 4" backsplash

- Western Pottery rectangular undercounter sinks with Moen® Cia™ bathroom fixtures
- Powder room features pedestal sinks with polished square mirrors
- Elongated toilets
- Medicine cabinets with polished edge (per plan)

## Gourmet Kitchen

- Samsung® 36" built-in gas cooktop in stainless steel
- Samsung® dishwasher in stainless steel
- Samsung® Over-the-Range Microwave in Fingerprint-Resistant Stainless Steel
- European quartz kitchen counters with 1-1/2" square-edge detail in Riviera, 6" quartz backsplash and full backsplash at cooktop
- Spacious kitchen island
- White thermofoil Shaker-style cabinets with crown molding, concealed hinges and contemporary bar pulls in satin nickel
- Sonetto Under-Mount Double-Equal kitchen sink with Moen® Sleek™ One-Handle Pulldown faucet in chrome
- InSinkErator Badger® food waste disposal with power cord and air switch in chrome
- 12" x 12" Daltile® flooring in choice of three colors
- USB outlet

## Primary Suite

- Deluxe semi-frameless Aquatic DARSEY bathroom and shower fiberglass unit
- Engineered marble counters with 4" backsplash and Western Pottery rectangular undercounter sink with Moen® Cia™ bathroom fixture in chrome
- White thermofoil Shaker-style cabinets with concealed hinges
- Spacious walk-in closet with shelf and pole
- 12" x 12" Daltile® AR Choice flooring in select locations in choice of three colors
- 26" medicine cabinets with polished edge
- Moen® Align™ bathroom accessories in chrome

4785 Habitat Dr., North Fontana, CA 92336 — Duncan Canyon Rd. & Coyote Canyon Rd.

[www.landseahomes.com/southern-california/wildstar](http://www.landseahomes.com/southern-california/wildstar)

**LANDSEA®**  
**HOMES**  
*Live in your element™*

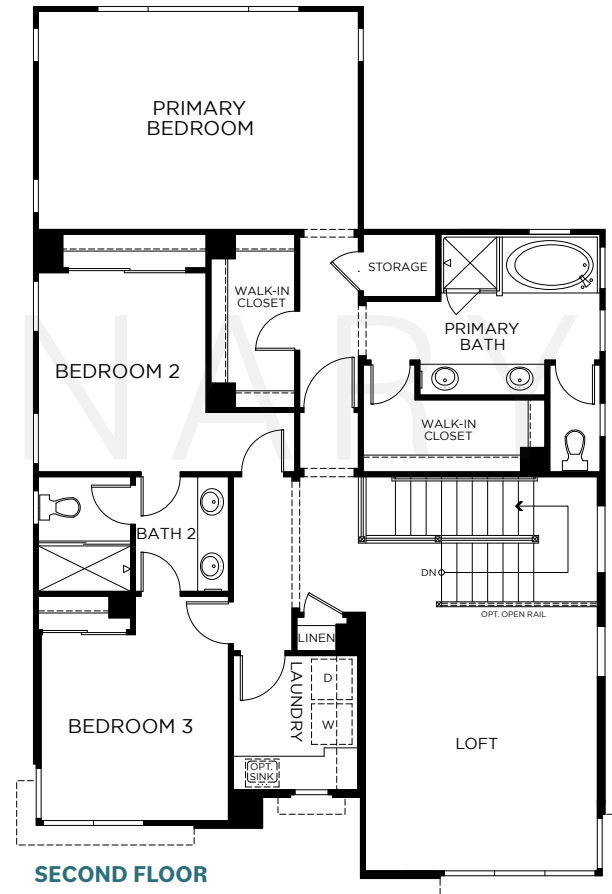
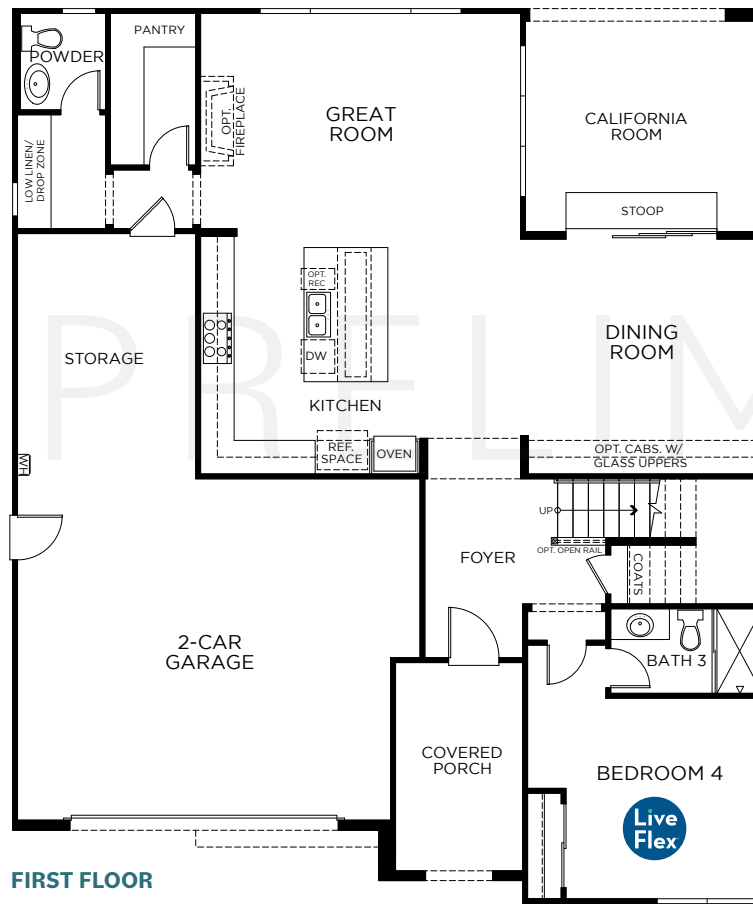
© 2025 Landsea Homes US Corporation. LANDSEA®, LIVE IN YOUR ELEMENT™ and LIVEFLEX™ are federally registered trademarks of Landsea. Bedroom(s) marked with LiveFlex™ are eligible for the LiveFlex optional program for an additional cost. You may select one (1) bedroom marked with LiveFlex for the program and pick your preferred package of options for that room. Plans, terms, pricing, square footage, product information, features, promotions, LiveFlex options, amenities and community/neighborhood information are subject to change without notice or obligation. Square footage is approximate. Home(s) shown may not represent actual homesite(s) for sale. Model(s) do(es) not display racial preference. Please see the actual purchase agreement for additional information, disclosures and disclaimers relating to your home, its features and your LiveFlex options. Individual energy costs and savings may vary. Landsea Homes does not guarantee any specific level of energy costs or savings. All rights reserved and strictly enforced. This is not an offering where prohibited by law. No information contained herein shall be deemed to constitute a representation or warranty of any kind. Please consult a Landsea Homes sales representative for details. Landsea Real Estate California, Inc. CA DRE license #02030520. 🏡



Wildstar  
at  
NARRA HILLS

## PLAN 1R

4 Bedrooms + Loft • 3.5 Baths • 2-Car Garage • 2,747 Sq. Ft.



4785 Habitat Dr., North Fontana, CA 92336 — Duncan Canyon Rd. & Coyote Canyon Rd.  
[www.landseahomes.com/southern-california/wildstar](http://www.landseahomes.com/southern-california/wildstar)

**LANDSEA**  
HOMES  
*Live in your element™*

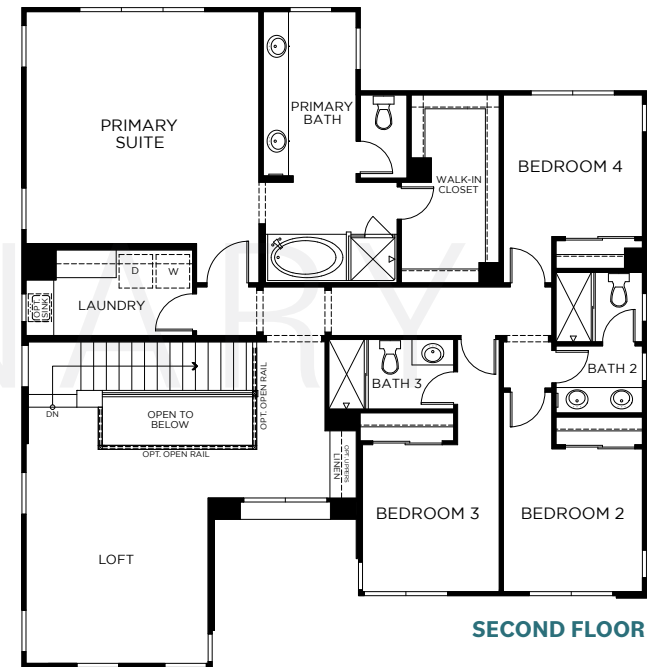
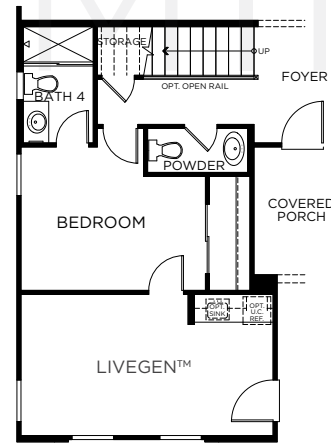
© 2025 Landsea Homes US Corporation. LANDSEA®, LIVE IN YOUR ELEMENT™ and LIVEFLEX™ are federally registered trademarks of Landsea. Bedroom(s) marked with LiveFlex™ are eligible for the LiveFlex optional program for an additional cost. You may select one (1) bedroom marked with LiveFlex for the program and pick your preferred package of options for that room. Plans, terms, pricing, square footage, product information, features, promotions, LiveFlex options, amenities and community/neighborhood information are subject to change without notice or obligation. Square footage is approximate. Home(s) shown may not represent actual homesite(s) for sale. Model(s) do(es) not display racial preference. Please see the actual purchase agreement for additional information, disclosures and disclaimers relating to your home, its features and your LiveFlex options. Individual energy costs and savings may vary. Landsea Homes does not guarantee any specific level of energy costs or savings. All rights reserved and strictly enforced. This is not an offering where prohibited by law. No information contained herein shall be deemed to constitute a representation or warranty of any kind. Please consult a Landsea Homes sales representative for details. Landsea Real Estate California, Inc. CA DRE license #02030520. 🏠



Wildstar  
at  
NARRA HILLS

## PLAN 2R

4 Bedrooms + Office + Loft • 4 Baths • 2-Car Garage • 2,961 Sq. Ft.



4785 Habitat Dr., North Fontana, CA 92336 — Duncan Canyon Rd. & Coyote Canyon Rd.

[www.landseahomes.com/southern-california/wildstar](http://www.landseahomes.com/southern-california/wildstar)

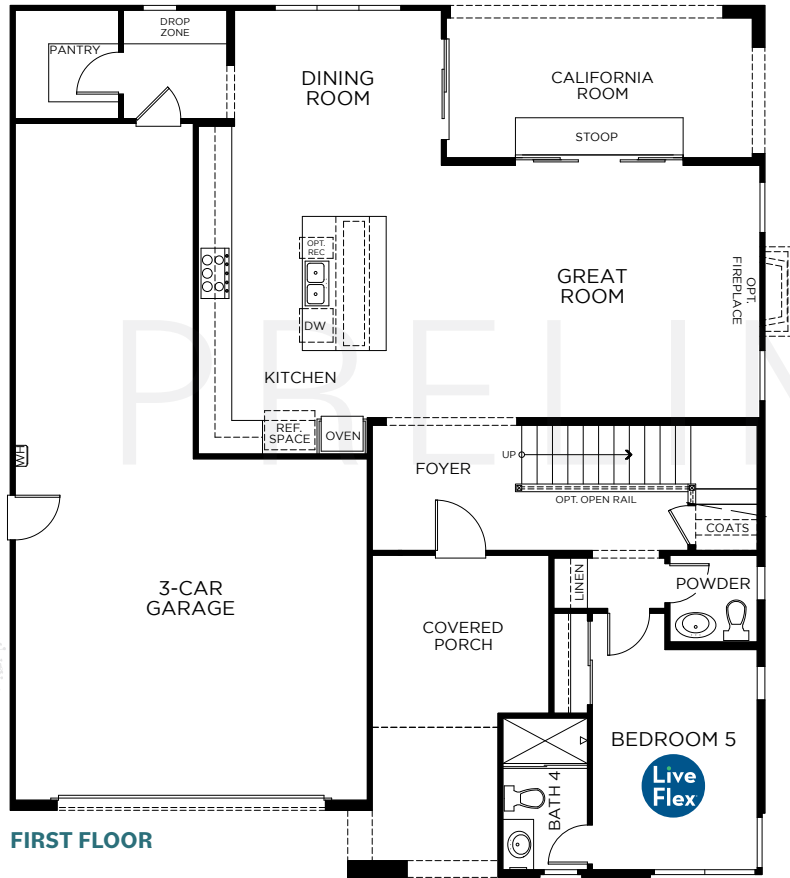
**LANDSEA®**  
**HOMES**  
*Live in your element™*

© 2025 Landsea Homes US Corporation. LANDSEA®, LIVE IN YOUR ELEMENT™ and LIVEFLEX™ are federally registered trademarks of Landsea. Bedroom(s) marked with LiveFlex™ are eligible for the LiveFlex optional program for an additional cost. You may select one (1) bedroom marked with LiveFlex for the program and pick your preferred package of options for that room. Plans, terms, pricing, square footage, product information, features, promotions, LiveFlex options, amenities and community/neighborhood information are subject to change without notice or obligation. Square footage is approximate. Home(s) shown may not represent actual homesite(s) for sale. Model(s) do(es) not display racial preference. Please see the actual purchase agreement for additional information, disclosures and disclaimers relating to your home, its features and your LiveFlex options. Individual energy costs and savings may vary. Landsea Homes does not guarantee any specific level of energy costs or savings. All rights reserved and strictly enforced. This is not an offering where prohibited by law. No information contained herein shall be deemed to constitute a representation or warranty of any kind. Please consult a Landsea Homes sales representative for details. Landsea Real Estate California, Inc. CA DRE license #02030520. 🏡



Wildstar  
at  
NARRA HILLS

## PLAN 3 5 Bedrooms + Loft • 4.5 Baths • 3-Car Garage • 3,079 Sq. Ft.



4785 Habitat Dr., North Fontana, CA 92336 — Duncan Canyon Rd. & Coyote Canyon Rd.  
[www.landseahomes.com/southern-california/wildstar](http://www.landseahomes.com/southern-california/wildstar)

**LANDSEA**  
HOMES  
*Live in your element™*

© 2025 Landsea Homes US Corporation. LANDSEA®, LIVE IN YOUR ELEMENT™ and LIVEFLEX™ are federally registered trademarks of Landsea. Bedroom(s) marked with LiveFlex™ are eligible for the LiveFlex optional program for an additional cost. You may select one (1) bedroom marked with LiveFlex for the program and pick your preferred package of options for that room. Plans, terms, pricing, square footage, product information, features, promotions, LiveFlex options, amenities and community/neighborhood information are subject to change without notice or obligation. Square footage is approximate. Home(s) shown may not represent actual homesite(s) for sale. Model(s) do(es) not display racial preference. Please see the actual purchase agreement for additional information, disclosures and disclaimers relating to your home, its features and your LiveFlex options. Individual energy costs and savings may vary. Landsea Homes does not guarantee any specific level of energy costs or savings. All rights reserved and strictly enforced. This is not an offering where prohibited by law. No information contained herein shall be deemed to constitute a representation or warranty of any kind. Please consult a Landsea Homes sales representative for details. Landsea Real Estate California, Inc. CA DRE license #02030520.





# Wildstar

at  
NARRA HILLS

## PLAN 1

4 Bedrooms + Loft  
3.5 Bathrooms  
2,747 Square Feet

## PLAN 2

4 Bedrooms + Loft + Office  
4 Bathrooms  
2,961 Square Feet

## PLAN 3

5 Bedrooms + Loft  
4.5 Bathrooms  
3,079 Square Feet



4785 Habitat Dr., North Fontana, CA 92336 — Duncan Canyon Rd. & Coyote Canyon Rd.

[www.landseahomes.com/southern-california/wildstar](http://www.landseahomes.com/southern-california/wildstar)

**LANDSEA**  
HOMES  
*Live in your element™*

© 2025 Landsea Homes US Corporation. LANDSEA®, LIVE IN YOUR ELEMENT™ and LIVEFLEX™ are federally registered trademarks of Landsea. Bedroom(s) marked with LiveFlex™ are eligible for the LiveFlex optional program for an additional cost. You may select one (1) bedroom marked with LiveFlex for the program and pick your preferred package of options for that room. Plans, terms, pricing, square footage, product information, features, promotions, LiveFlex options, amenities and community/neighborhood information are subject to change without notice or obligation. Square footage is approximate. Home(s) shown may not represent actual homesite(s) for sale. Model(s) do(es) not display racial preference. Please see the actual purchase agreement for additional information, disclosures and disclaimers relating to your home, its features and your LiveFlex options. Individual energy costs and savings may vary. Landsea Homes does not guarantee any specific level of energy costs or savings. All rights reserved and strictly enforced. This is not an offering where prohibited by law. No information contained herein shall be deemed to constitute a representation or warranty of any kind. Please consult a Landsea Homes sales representative for details. Landsea Real Estate California, Inc. CA DRE license #02030520. 