



Lavender

SUNNYVALE

LINDSEAS[®]
HOMES
Live in your element[®]





Lavender

SUNNYVALE

Welcome to Lavender, a new charm-filled community in Sunnyvale, CA. This exclusive collection of 128 townhomes offers nine different floor plans ranging from 1,078 to 2,010 square feet with High Performance Home features, including smart home automation with Apple® HomeKit® technology. You can enjoy the benefits of your address when you're an easy walk away to Michaels and Safeway and a short drive to entertainment, sports stadiums, dining and shopping! Visit Apple Park, Topgolf, Levi's® Stadium and a trove of local restaurants. Plus, for jet-setters and out-of-town guests, San Jose International Airport is only ten miles away. Lavender—it's right where you want to be.



RESIDENCE

5

Approx. 1,763 Sq. Ft.

4 Bedrooms

2.5 Baths

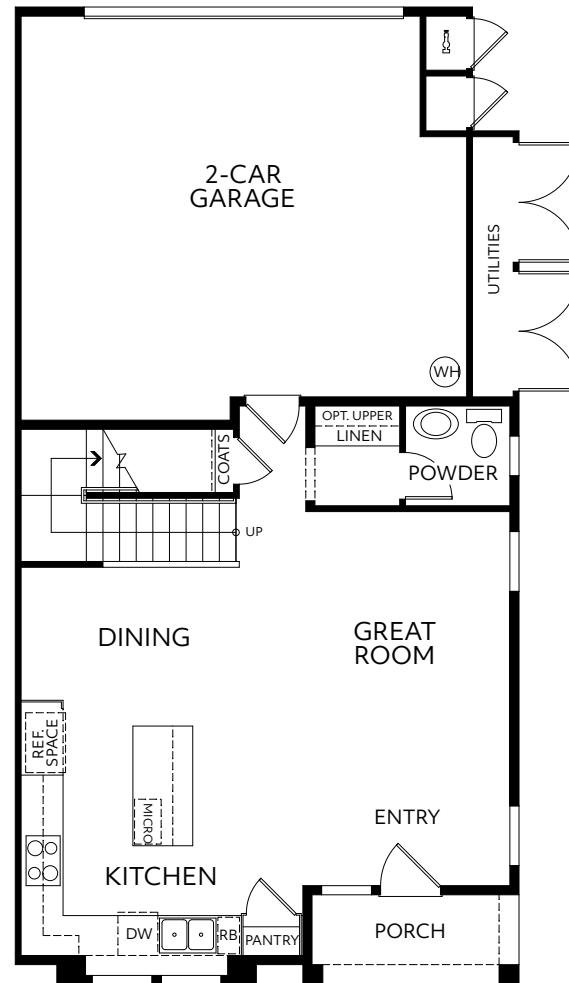
2-Car Garage



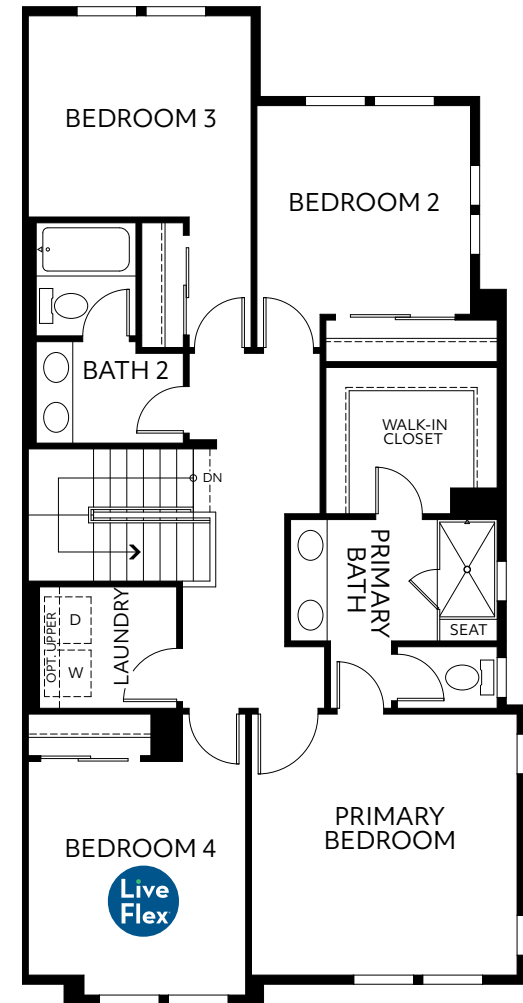
Lavender

SUNNYVALE

FIRST FLOOR



SECOND FLOOR



PRELIMINARY

© 2021 Landsea Homes US Corporation. LANDSEA®, LIVE IN YOURELEMENT® and LIVEFLEX® are federally registered trademarks of Landsea. Bedroom(s) marked with LiveFlex® are eligible for the LiveFlex optional program for an additional cost. You may select one (1) bedroom marked with LiveFlex for the program and pick your preferred package of options for that room. Plans, terms, pricing, square footages, product information, features, promotions, LiveFlex options, amenities and community/neighborhood information are subject to change without notice or obligation. Photographs, renderings, virtual tours and floor plans are for representational purposes only and may not reflect the exact features or dimensions of your home or LiveFlex options. Models do not reflect racial or other preferences. Homes shown do not represent actual homesites. Square footages are approximate. LiveFlex program and some features or options shown may not be offered in your community. Models display decorator items and furniture that are not available for purchase. Please see the actual purchase agreement for additional information, disclosures and disclaimers relating to your home, its features and your LiveFlex options. Individual energy costs and savings may vary. Landsea Homes does not guarantee any specific level of energy costs or savings. All rights reserved and strictly enforced. This is not an offering where prohibited by law. No information contained herein shall be deemed to constitute a representation or warranty of any kind. Please consult a Landsea Homes sales representative for details. Landsea Real Estate California, Inc. CA DRE license #02030520.

Remarkable Appointments

Luxury Living

- Stunning two- and three-story townhomes and condominiums in four striking architectural styles
- Spacious floor plans

Designer Interiors

- LED lighting throughout
- Smooth five-panel Rockport™ interior doors
- 2-1/4" door casings and 5-1/2" baseboards
- Therma-Tru® smooth fiberglass entry door
- Shaw® Union Terrace carpeting in choice of Artisan Craft, Toffee, Coconut Twist, Free Spirit or Hampton Surf
- Kwikset® San Clemente handleset in Iron Black at entry door
- Premium Sherwin-Williams® Pearly White walls, ceiling and trim
- Standard LVP in selected areas

Inspiring Kitchen

- 30" over-the-range microhood (BMR only)
- 30" slide-in electric range in stainless steel finish and 24" dishwasher in stainless steel finish
- 30" built-in microwave (market rate only)
- Sterling® Ludington® stainless steel undermount sink with Moen® Sleek pull-down faucet

- Distinctive maple cabinetry with melamine interiors and chrome pulls
- Shaker-style cabinets with soft-closing hinges and drawers (market rate only)
- Kitchen island (per plan)
- Daltile® ONE Quartz Surfaces® countertops in choice of Simply White, Simply Grey or Simply Beige with 1-1/2" laminated eased edges, full backsplash at range and 6" backsplash throughout
- 1/2 horsepower InSinkErator Badger® disposal
- Finished wood top finish and hardware to match whole house selection (Residence 7 only)

Incredible Primary Suite

- Spacious bedroom with walk-in closet (except Residence 8)
- Distinctive maple cabinetry with melamine interiors and chrome pulls
- Shaker-style cabinets with soft-closing hinges and drawers (market rate only)
- E-Stone countertop in Glacier White with 4" backsplash and laminated 1-1/4" square front edge
- 7' shower with E-Stone shower seat in Glacier White (per plan), Moen® Voss shower fixture and 1/4" glass surround, clear glass enclosure and chrome trim

- Kohler® white rectangular undermount sink with Moen® Voss single-handle polished chrome fixture
- PROFLO® high-efficiency commode

Secondary Baths

- E-Stone countertop in Glacier White with 4" backsplash and square front edge
- E-Stone shower surrounds in Glacier White
- Distinctive maple cabinetry with melamine interiors and chrome pulls
- Shaker-style cabinets with soft-closing hinges and drawers (market rate only)
- Sterling® Performa™ tub with Moen® polished chrome fixture
- Kohler® Caxton™ white rectangular undermount sink with Moen® Voss single-handle polished chrome fixture
- PROFLO® high-efficiency commode

Powder Bath

- Kohler® Archer® white pedestal sink with Moen® Voss single-handle polished chrome fixture
- PROFLO® high-efficiency commode

Energy Efficiency & Highlights

- White Decora® rocker light switches throughout and dimmer switch (market rate only)
- Smoke detectors with carbon dioxide detectors for peace of mind
- Insulated garage doors with LiftMaster® belt drive garage door opener with built-in camera
- Electric car charger circuit preparation in garage
- Convenient USB port in kitchen
- Included fire sprinkler system
- Apple® HomePod mini™ and compatible Kwikset® Premis™ contemporary entry door smart lock in Iron Black (market rate only)
- Air conditioning system
- Cat 6 wiring throughout
- Full-wrap 5" profile rain gutters with 2" X 3" downspout
- Pli-Dek® deck system in gray with 10-year warranty
- Standard solar lease – option to purchase
- Dual-glazed Low-E windows per Title 24
- Ask us about HPH features!



PRELIMINARY

© 2021 Landsea Homes US Corporation. LANDSEA®, LIVE IN YOUR ELEMENT® and LIVEFLEX® are federally registered trademarks of Landsea. Bedroom(s) marked with LiveFlex® are eligible for the LiveFlex optional program for an additional cost. You may select one (1) bedroom marked with LiveFlex for the program and pick your preferred package of options for that room. Plans, terms, pricing, square footages, product information, features, promotions, LiveFlex options, amenities and community/neighborhood information are subject to change without notice or obligation. Photographs, renderings, virtual tours and floor plans are for representational purposes only and may not reflect the exact features or dimensions of your home or LiveFlex options. Models do not reflect racial or other preferences. Homes shown do not represent actual homesites. Square footages are approximate. LiveFlex program and some features or options shown may not be offered in your community. Models display decorator items and furniture that are not available for purchase. Please see the actual purchase agreement for additional information, disclosures and disclaimers relating to your home, its features and your LiveFlex options. Individual energy costs and savings may vary. Landsea Homes does not guarantee any specific level of energy costs or savings. All rights reserved and strictly enforced. This is not an offering where prohibited by law. No information contained herein shall be deemed to constitute a representation or warranty of any kind. Please consult a Landsea Homes sales representative for details. Landsea Real Estate California, Inc. CA DRE license #02030520.

LANDSEA
HOMES
Live in your element[®]
LandseaHomes.com

Site Plan



Lavender
SUNNYVALE

© 2021 Landsea Homes US Corporation. LANDSEA®, LIVE IN YOUR ELEMENT® and LIVEFLEX® are federally registered trademarks of Landsea. Bedroom(s) marked with LiveFlex® are eligible for the LiveFlex optional program for an additional cost. You may select one (1) bedroom marked with LiveFlex for the program and pick your preferred package of options for that room. Plans, terms, pricing, square footages, product information, features, promotions, LiveFlex options, amenities and community/neighborhood information are subject to change without notice or obligation. Photographs, renderings, virtual tours and floor plans are for representational purposes only and may not reflect the exact features or dimensions of your home or LiveFlex options. Models do not reflect racial or other preferences. Homes shown do not represent actual homesites. Square footages are approximate. LiveFlex program and some features or options shown may not be offered in your community. Models display decorator items and furniture that are not available for purchase. Please see the actual purchase agreement for additional information, disclosures and disclaimers relating to your home, its features and your LiveFlex options. Individual energy costs and savings may vary. Landsea Homes does not guarantee any specific level of energy costs or savings. All rights reserved and strictly enforced. This is not an offering where prohibited by law. No information contained herein shall be deemed to constitute a representation or warranty of any kind. Please consult a Landsea Homes sales representative for details. Landsea Real Estate California, Inc. CA DRE license #02030520.