

# St. John's Preserve

**HEATHER** Approx. 1,842 Sq. Ft. • 4 Bedrooms • 2 Bathrooms • 2-Car Garage



TRADITIONAL



MEDITERRANEAN



FRENCH COUNTRY

©2021 Landsea Homes US Corporation. LANDSEA® and LIVE IN YOUR ELEMENT® are federally registered trademarks of Landsea or its licensors. Plans, pricing, product information, square footage, amenities and community/building information are subject to change without notice or obligation. Photographs, renderings, virtual tours and floor plans are for representational purposes only and may not reflect the exact features or dimensions of your home. Models shown do not reflect racial or other preference. Homes shown do not represent actual homesites. Square footages are approximate. Some features and options shown may not be offered in your community/building. Please see the actual purchase agreement for additional information, disclosures and disclaimers relating to your home and its features. All rights reserved and strictly enforced. This is not an offering where prohibited by law. No information contained herein shall be deemed to constitute a representation or warranty of any kind. Please consult a Landsea Homes sales representative for details. Mercedes Premier Realty CQ1040509. 🏠

**LANDSEA**  
**HOMES**  
*Live in your element®*



# St. John's Preserve

**HEATHER** Approx. 1,842 Sq. Ft. • 4 Bedrooms • 2 Bathrooms • 2-Car Garage



CRAFTSMAN



COASTAL



CONTEMPORARY

©2021 Landsea Homes US Corporation. LANDSEA® and LIVE IN YOUR ELEMENT® are federally registered trademarks of Landsea or its licensors. Plans, pricing, product information, square footage, amenities and community/building information are subject to change without notice or obligation. Photographs, renderings, virtual tours and floor plans are for representational purposes only and may not reflect the exact features or dimensions of your home. Models shown do not reflect racial or other preference. Homes shown do not represent actual homesites. Square footages are approximate. Some features and options shown may not be offered in your community/building. Please see the actual purchase agreement for additional information, disclosures and disclaimers relating to your home and its features. All rights reserved and strictly enforced. This is not an offering where prohibited by law. No information contained herein shall be deemed to constitute a representation or warranty of any kind. Please consult a Landsea Homes sales representative for details. Mercedes Premier Realty CQ1040509. 🏠

**LANDSEA**  
**HOMES**  
*Live in your element®*



# St. John's Preserve

**HEATHER** Approx. 1,842 Sq. Ft. • 4 Bedrooms • 2 Bathrooms • 2-Car Garage



TRANSITIONAL



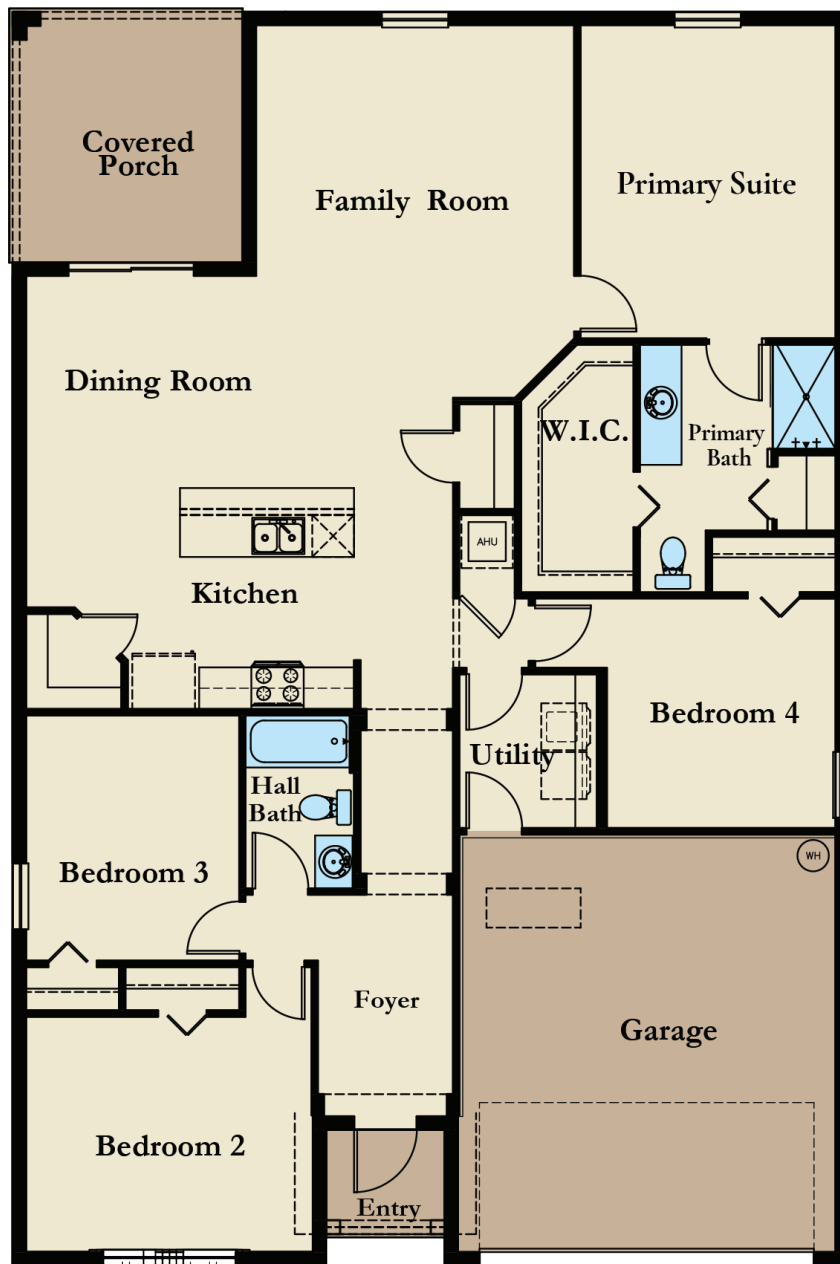
MODERN

©2021 Landsea Homes US Corporation. LANDSEA® and LIVE IN YOUR ELEMENT® are federally registered trademarks of Landsea or its licensors. Plans, pricing, product information, square footage, amenities and community/building information are subject to change without notice or obligation. Photographs, renderings, virtual tours and floor plans are for representational purposes only and may not reflect the exact features or dimensions of your home. Models shown do not reflect racial or other preference. Homes shown do not represent actual homesites. Square footages are approximate. Some features and options shown may not be offered in your community/building. Please see the actual purchase agreement for additional information, disclosures and disclaimers relating to your home and its features. All rights reserved and strictly enforced. This is not an offering where prohibited by law. No information contained herein shall be deemed to constitute a representation or warranty of any kind. Please consult a Landsea Homes sales representative for details. Mercedes Premier Realty CQ1040509. 🏠

**LANDSEA**  
HOMES  
*Live in your element®*

# St. John's Preserve

**HEATHER** Approx. 1,842 Sq. Ft. • 4 Bedrooms • 2 Bathrooms • 2-Car Garage



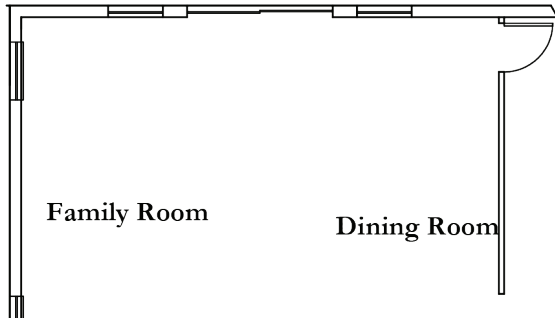
©2021 Landsea Homes US Corporation. LANDSEA® and LIVE IN YOUR ELEMENT® are federally registered trademarks of Landsea or its licensors. Plans, pricing, product information, square footage, amenities and community/building information are subject to change without notice or obligation. Photographs, renderings, virtual tours and floor plans are for representational purposes only and may not reflect the exact features or dimensions of your home. Models shown do not reflect racial or other preference. Homes shown do not represent actual homesites. Square footages are approximate. Some features and options shown may not be offered in your community/building. Please see the actual purchase agreement for additional information, disclosures and disclaimers relating to your home and its features. All rights reserved and strictly enforced. This is not an offering where prohibited by law. No information contained herein shall be deemed to constitute a representation or warranty of any kind. Please consult a Landsea Homes sales representative for details. Mercedes Premier Realty CQ1040509. 🏠

**LANDSEA**  
HOMES  
*Live in your element®*

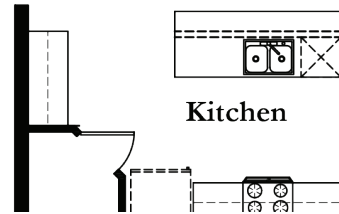
# St. John's Preserve

**HEATHER** Approx. 1,842 Sq. Ft. • 4 Bedrooms • 2 Bathrooms • 2-Car Garage

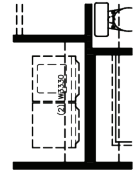
## OPTIONAL FEATURES



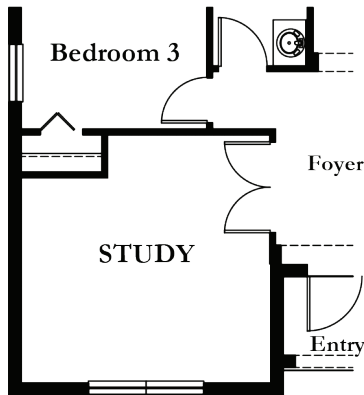
OPTIONAL DINING/FAMILY  
SLIDING GLASS DOORS WITH WINDOWS  
\*ONLY AVAILABLE WITH:  
40'X10' COVERED PORCH WITH EXTENDED LIVING  
27'X10' COVERED PORCH WITH EXTENDED LIVING



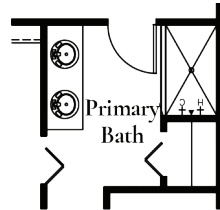
OPTIONAL CABINETS  
AT KITCHEN



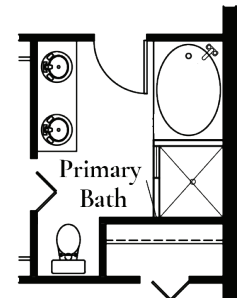
OPTIONAL DELUXE  
UTILITY CABINETS



OPTIONAL STUDY ILO  
BEDROOM 2



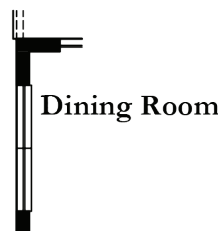
OPTIONAL DOUBLE SINK  
AT PRIMARY BATH



OPTIONAL DELUXE  
PRIMARY BATH



OPTIONAL WINDOWS  
AT FAMILY ROOM



OPTIONAL WINDOW  
AT DINING

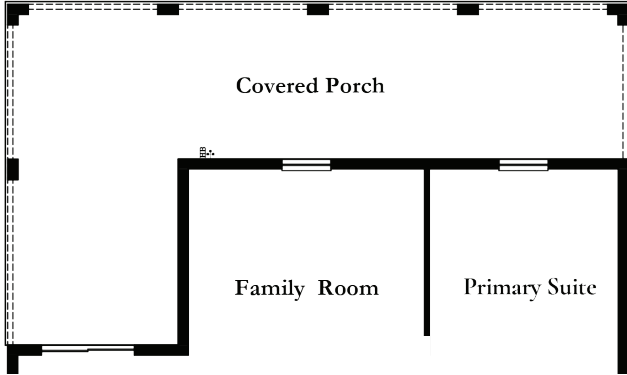


OPTIONAL WINDOWS  
AT PRIMARY SUITE

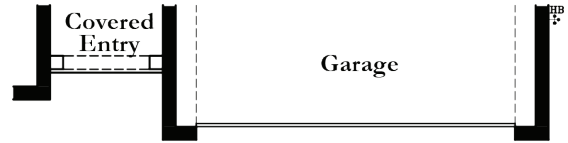
# St. John's Preserve

**HEATHER** Approx. 1,842 Sq. Ft. • 4 Bedrooms • 2 Bathrooms • 2-Car Garage

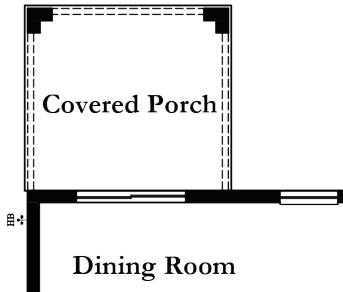
## OPTIONAL FEATURES



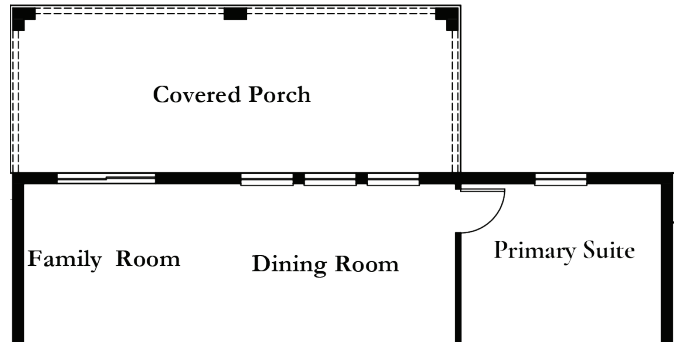
OPTIONAL 40'-0" X 10'-0" COVERED PORCH



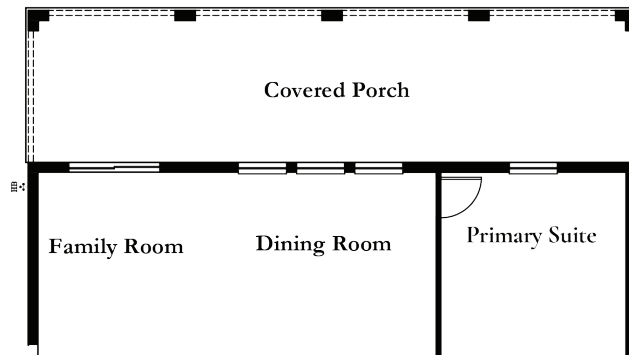
OPTIONAL 2' GARAGE EXTENSION  
\*ADDS 39 SQ. FT.



OPTIONAL 11'-0" X 10'-0" COVERED PORCH  
WITH EXTENDED DINING



OPTIONAL 27'-0" X 10'-0" COVERED PORCH  
WITH EXTENDED DINING



OPTIONAL 40'-0" X 10'-0" COVERED PORCH  
WITH EXTENDED DINING