

St. John's Preserve

HARPER Approx. 2,531 Sq. Ft. • 5 Bedrooms • 2.5 Bathrooms • Game Room • 2-Car Garage



TRADITIONAL



FRENCH COUNTRY



MEDITERRANEAN

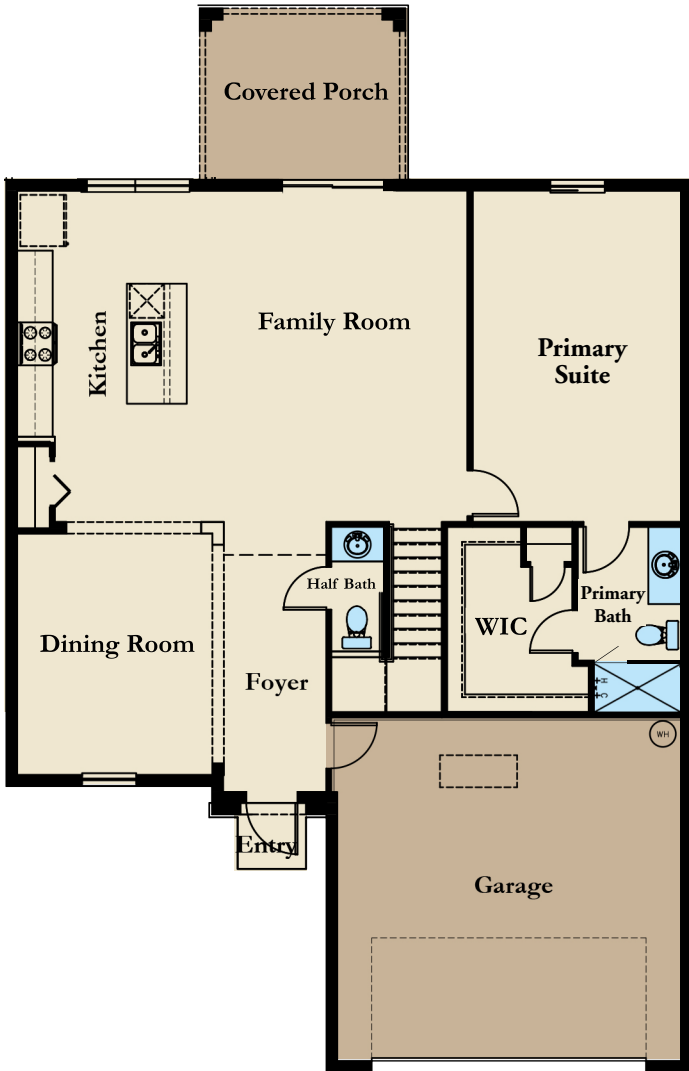
©2021 Landsea Homes US Corporation. LANDSEA® and LIVE IN YOUR ELEMENT® are federally registered trademarks of Landsea or its licensors. Plans, pricing, product information, square footage, amenities and community/building information are subject to change without notice or obligation. Photographs, renderings, virtual tours and floor plans are for representational purposes only and may not reflect the exact features or dimensions of your home. Models shown do not reflect racial or other preference. Homes shown do not represent actual homesites. Square footages are approximate. Some features and options shown may not be offered in your community/building. Please see the actual purchase agreement for additional information, disclosures and disclaimers relating to your home and its features. All rights reserved and strictly enforced. This is not an offering where prohibited by law. No information contained herein shall be deemed to constitute a representation or warranty of any kind. Please consult a Landsea Homes sales representative for details. Mercedes Premier Realty CQ1040509. 🏠

LANDSEA
HOMES
Live in your element®

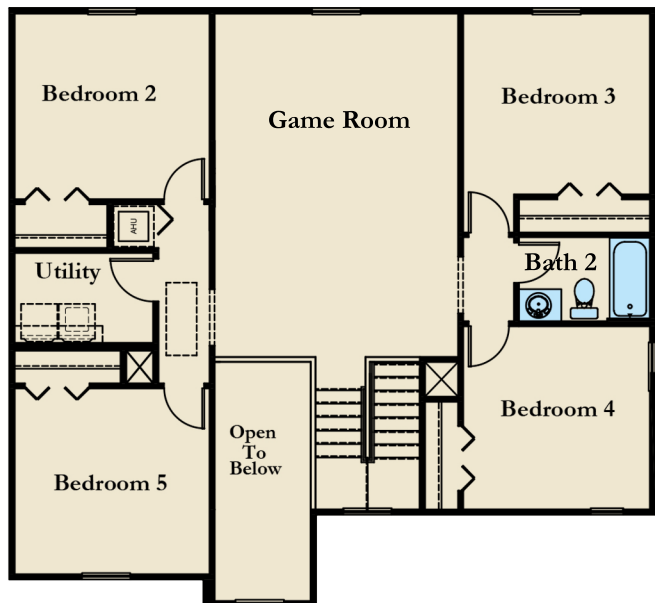
St. John's Preserve

HARPER Approx. 2,531 Sq. Ft. • 5 Bedrooms • 2.5 Bathrooms • Game Room • 2-Car Garage

FIRST FLOOR



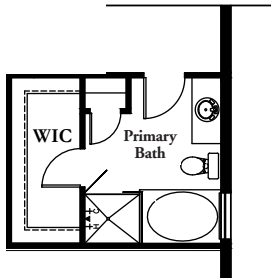
SECOND FLOOR



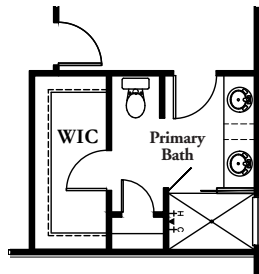
St. John's Preserve

HARPER Approx. 2,531 Sq. Ft. • 5 Bedrooms • 2.5 Bathrooms • Game Room • 2-Car Garage

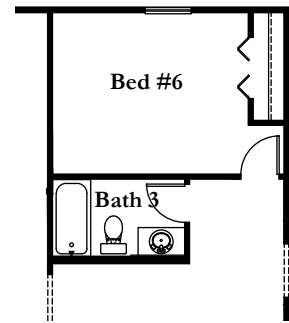
OPTIONAL FEATURES



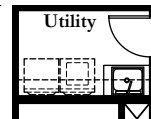
OPTIONAL DELUXE
PRIMARY BATH 1



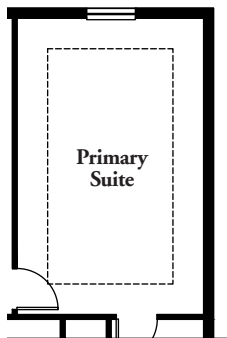
OPTIONAL DELUXE
PRIMARY BATH 2



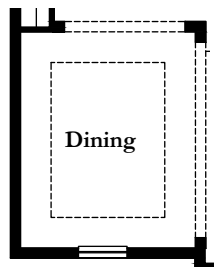
OPTIONAL BEDROOM 6 WITH
BATH 3 ILO GAME ROOM



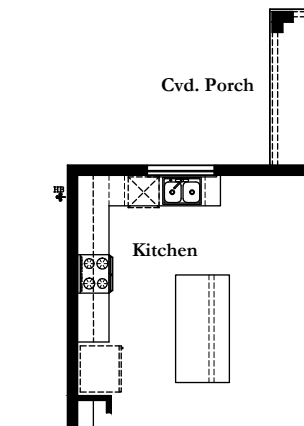
OPTIONAL DELUXE UTILITY



OPTIONAL TRAY
AT PRIMARY SUITE



OPTIONAL TRAY
AT DINING ROOM

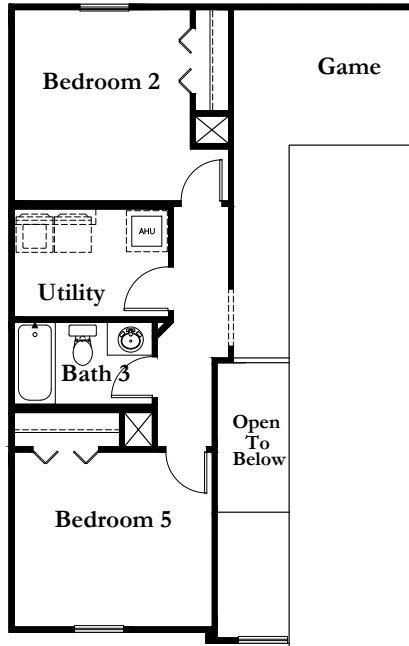


OPTIONAL DELUXE KITCHEN

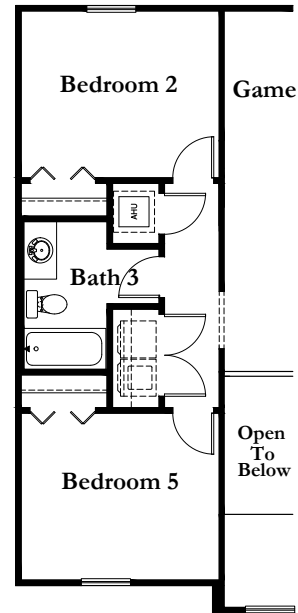
St. John's Preserve

HARPER Approx. 2,531 Sq. Ft. • 5 Bedrooms • 2.5 Bathrooms • Game Room • 2-Car Garage

OPTIONAL FEATURES



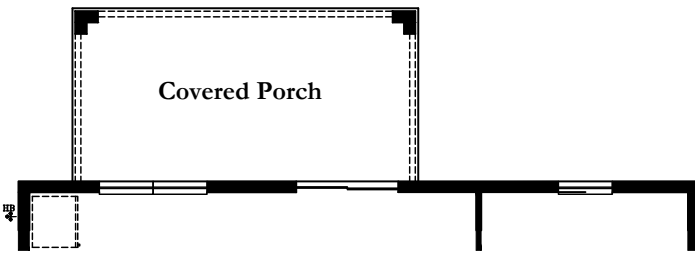
OPTIONAL BATH 3 WITH UTILITY ROOM
*ADDS 90 SQ. FT.



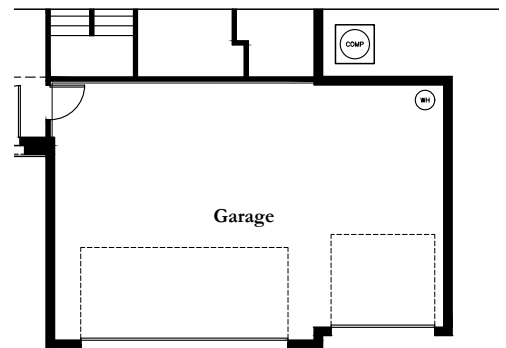
OPTIONAL BATH 3



OPTIONAL 2' GARAGE EXTENSION
*ADDS 43 SQ. FT.



OPTIONAL 20'-10" X 10'-0" COVERED PORCH
*ADDS 200 SQ. FT.



OPTIONAL 3 CAR GARAGE
*ADDS 200 SQ. FT.