

Country Club Estates

BRIELLA Approx. 2,085 Sq. Ft. • 3 Bedrooms • 2 Bathrooms • Flex Room/Study • 3-Car Garage



TRADITIONAL



MEDITERRANEAN



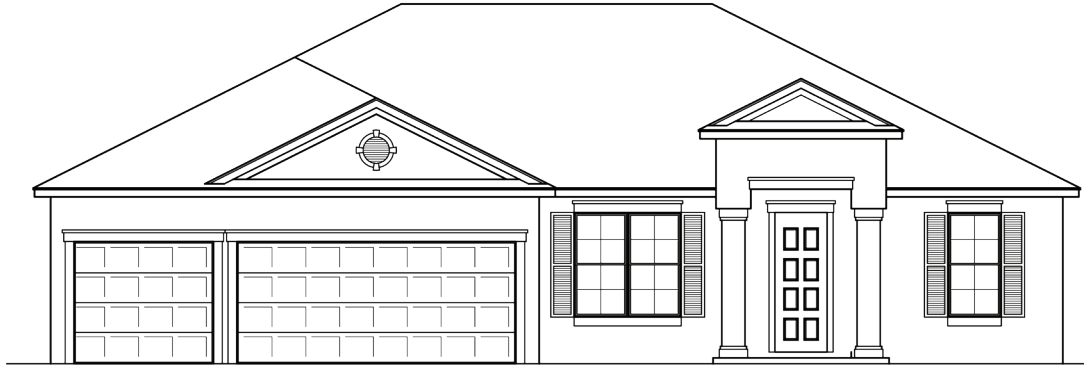
FRENCH COUNTRY

©2021 Landsea Homes US Corporation. LANDSEA® and LIVE IN YOUR ELEMENT® are federally registered trademarks of Landsea or its licensors. Plans, pricing, product information, square footage, amenities and community/building information are subject to change without notice or obligation. Photographs, renderings, virtual tours and floor plans are for representational purposes only and may not reflect the exact features or dimensions of your home. Models shown do not reflect racial or other preference. Homes shown do not represent actual homesites. Square footages are approximate. Some features and options shown may not be offered in your community/building. Please see the actual purchase agreement for additional information, disclosures and disclaimers relating to your home and its features. All rights reserved and strictly enforced. This is not an offering where prohibited by law. No information contained herein shall be deemed to constitute a representation or warranty of any kind. Please consult a Landsea Homes sales representative for details. Mercedes Premier Realty CQ1040509. 🏠

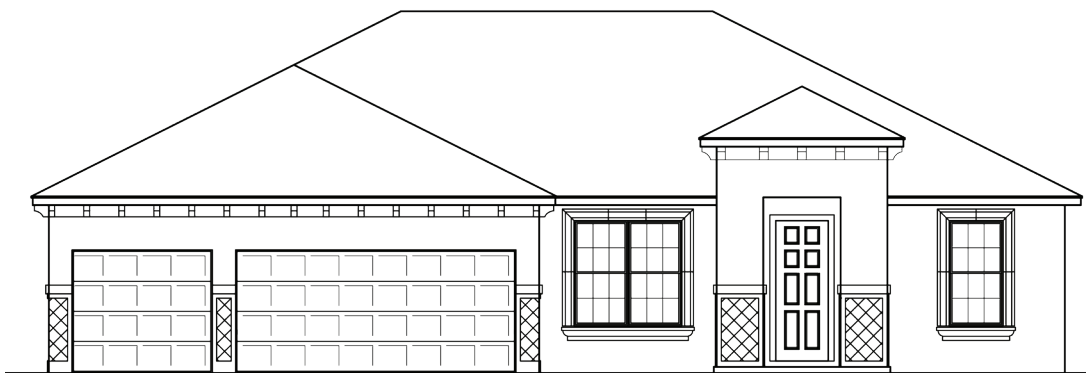
LANDSEA
HOMES
Live in your element®

Country Club Estates

BRIELLA Approx. 2,085 Sq. Ft. • 3 Bedrooms • 2 Bathrooms • Flex Room/Study • 3-Car Garage



TRADITIONAL II



MEDITERRANEAN II

©2021 Landsea Homes US Corporation. LANDSEA® and LIVE IN YOUR ELEMENT® are federally registered trademarks of Landsea or its licensors. Plans, pricing, product information, square footage, amenities and community/building information are subject to change without notice or obligation. Photographs, renderings, virtual tours and floor plans are for representational purposes only and may not reflect the exact features or dimensions of your home. Models shown do not reflect racial or other preference. Homes shown do not represent actual homesites. Square footages are approximate. Some features and options shown may not be offered in your community/building. Please see the actual purchase agreement for additional information, disclosures and disclaimers relating to your home and its features. All rights reserved and strictly enforced. This is not an offering where prohibited by law. No information contained herein shall be deemed to constitute a representation or warranty of any kind. Please consult a Landsea Homes sales representative for details. Mercedes Premier Realty CQ1040509. 🏠

LANDSEA
HOMES
Live in your element®

Country Club Estates

BRIELLA Approx. 2,085 Sq. Ft. • 3 Bedrooms • 2 Bathrooms • Flex Room/Study • 3-Car Garage



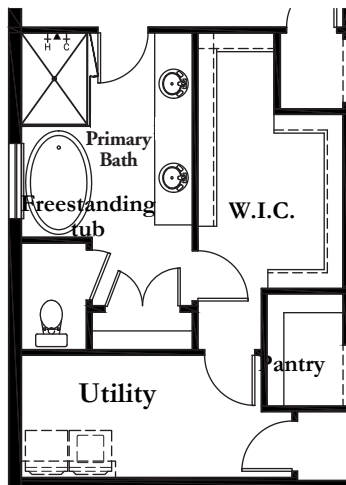
©2021 Landsea Homes US Corporation. LANDSEA® and LIVE IN YOUR ELEMENT® are federally registered trademarks of Landsea or its licensors. Plans, pricing, product information, square footage, amenities and community/building information are subject to change without notice or obligation. Photographs, renderings, virtual tours and floor plans are for representational purposes only and may not reflect the exact features or dimensions of your home. Models shown do not reflect racial or other preference. Homes shown do not represent actual homesites. Square footages are approximate. Some features and options shown may not be offered in your community/building. Please see the actual purchase agreement for additional information, disclosures and disclaimers relating to your home and its features. All rights reserved and strictly enforced. This is not an offering where prohibited by law. No information contained herein shall be deemed to constitute a representation or warranty of any kind. Please consult a Landsea Homes sales representative for details. Mercedes Premier Realty CQ1040509. 🏠

LANDSEA
HOMES
Live in your element®

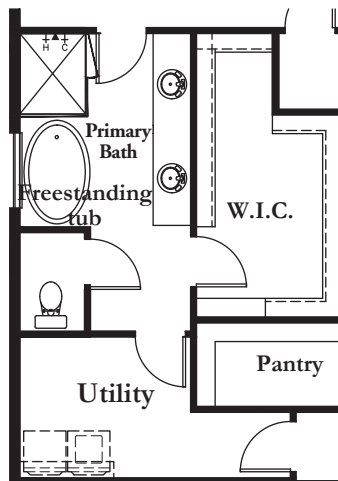
Country Club Estates

BRIELLA Approx. 2,085 Sq. Ft. • 3 Bedrooms • 2 Bathrooms • Flex Room/Study • 3-Car Garage

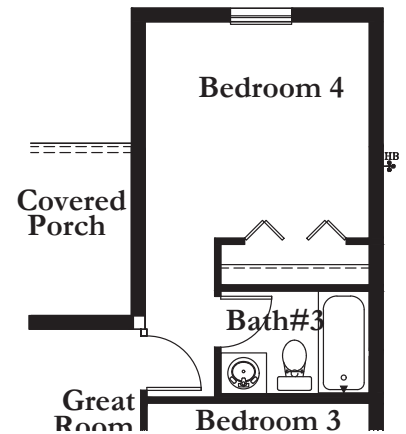
OPTIONAL FEATURES



Optional Deluxe Primary Bath 1

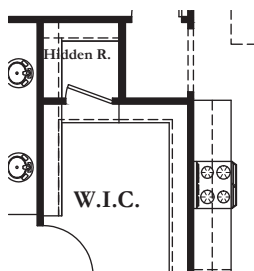


Optional Deluxe Primary Bath 2

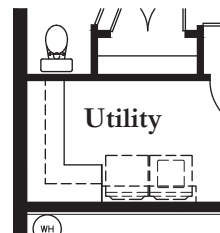


Optional Bath 3

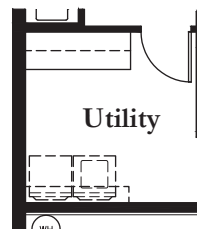
*ONLY AVAILABLE WITH OPT. BEDROOM 4



Optional Hidden Room
At Primary Walk-In Closet

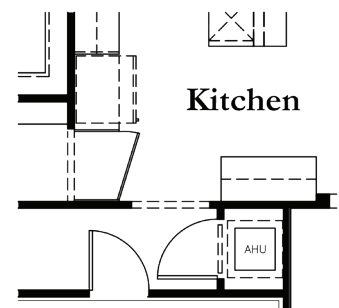


Optional Deluxe Utility
with Optional Deluxe Bath 1



Optional Deluxe Utility 2

*CABINET LAYOUT CHANGES WHEN
OPT. DELUXE PRIMARY BATH 2 IS SELECTED



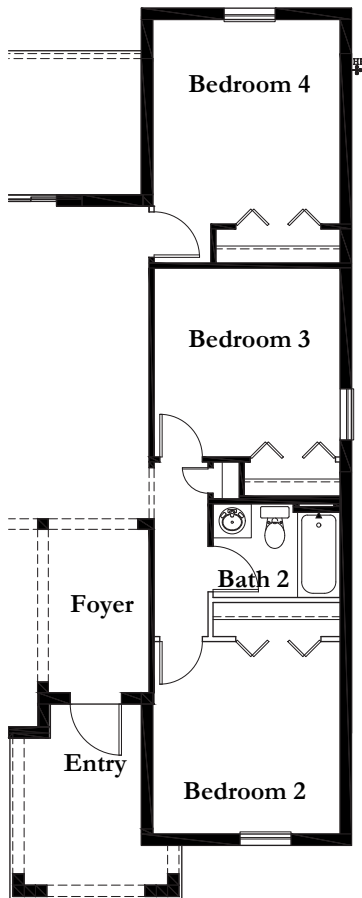
Optional Cabinets

ILO KITCHEN CLOSET

Country Club Estates

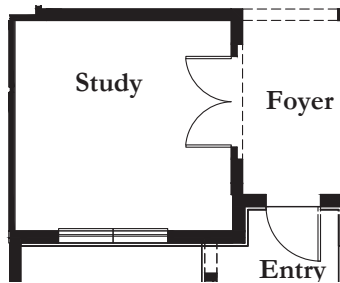
BRIELLA Approx. 2,085 Sq. Ft. • 3 Bedrooms • 2 Bathrooms • Flex Room/Study • 3-Car Garage

OPTIONAL FEATURES



Optional Bedroom 4

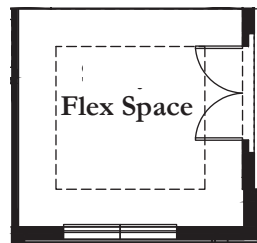
*ADDS 190 LIVING SQ. FT.
*ADDS 56 SQ. FT. TO ENTRY



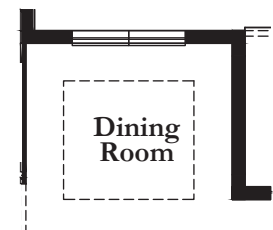
**Optional Study
ILO Flex Space**



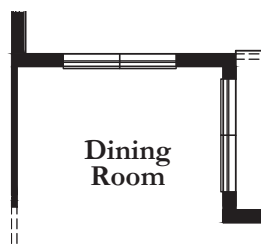
**Optional Tray
at Great Room**



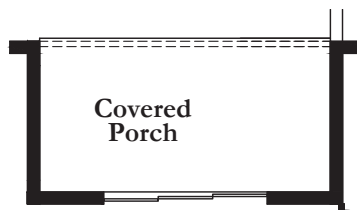
**Optional Tray
at Flex Space**



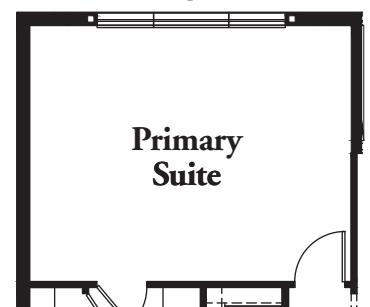
**Optional Tray
at Dining Room**



**Optional Windows
at Dining Room**



**Optional 9' Sliding Glass Door
at Great Room**



**Optional Windows
at Primary Suite**

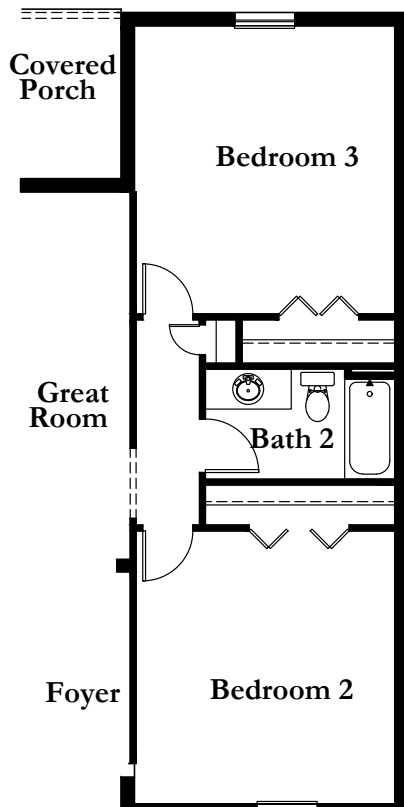
©2021 Landsea Homes US Corporation. LANDSEA® and LIVE IN YOUR ELEMENT® are federally registered trademarks of Landsea or its licensors. Plans, pricing, product information, square footage, amenities and community/building information are subject to change without notice or obligation. Photographs, renderings, virtual tours and floor plans are for representational purposes only and may not reflect the exact features or dimensions of your home. Models shown do not reflect racial or other preference. Homes shown do not represent actual homesites. Square footages are approximate. Some features and options shown may not be offered in your community/building. Please see the actual purchase agreement for additional information, disclosures and disclaimers relating to your home and its features. All rights reserved and strictly enforced. This is not an offering where prohibited by law. No information contained herein shall be deemed to constitute a representation or warranty of any kind. Please consult a Landsea Homes sales representative for details. Mercedes Premier Realty CQ1040509. 🏠

LANDSEA
HOMES
Live in your element®

Country Club Estates

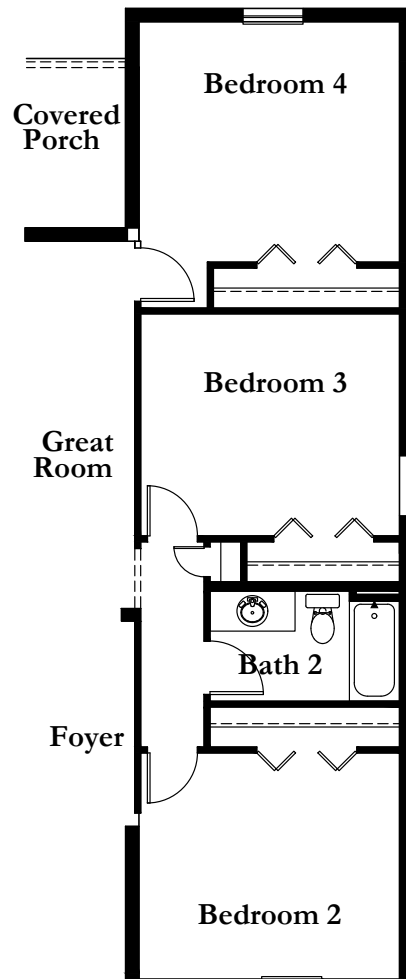
BRIELLA Approx. 2,085 Sq. Ft. • 3 Bedrooms • 2 Bathrooms • Flex Room/Study • 3-Car Garage

OPTIONAL FEATURES



**Optional 2' Side Extension
at Bedroom 2 and Bedroom 3**

*ADDS 80 LIVING SQ. FT.



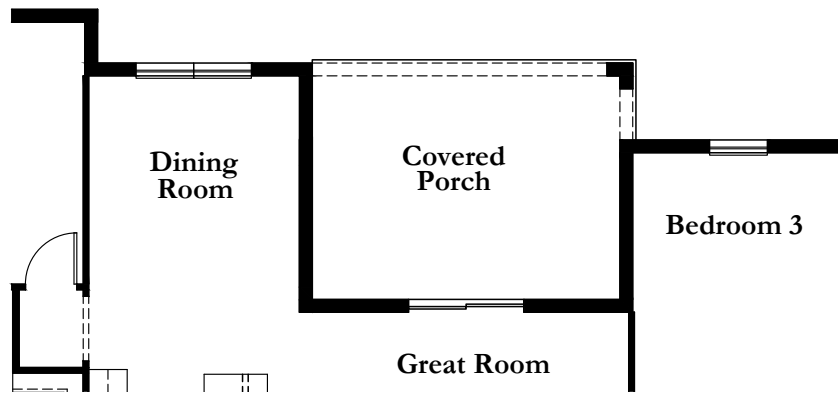
**Optional 2' Side Extension
at Bedroom 2, 3 and 4**

MUST SELECT OPTIONAL BEDROOM 4
*ADDS 98 LIVING SQ. FT.

Country Club Estates

BRIELLA Approx. 2,085 Sq. Ft. • 3 Bedrooms • 2 Bathrooms • Flex Room/Study • 3-Car Garage

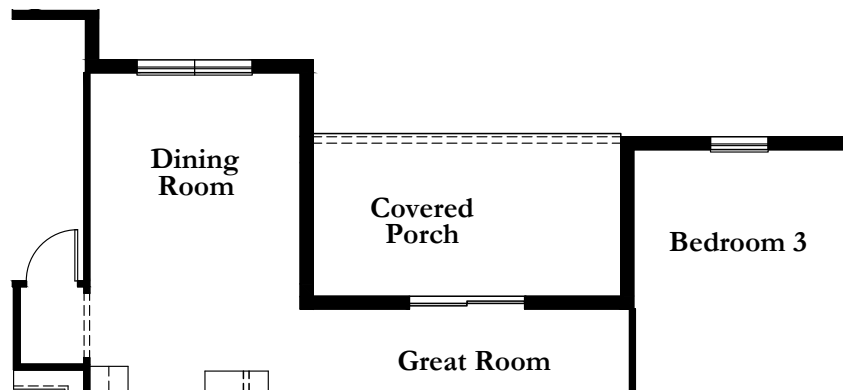
OPTIONAL FEATURES



Optional Dining and Porch 4' Extension

*ADDS 45 LIVING SQ. FT.

*ADDS 67 PORCH SQ. FT.



Optional Dining 4' Extension

*ADDS 45 LIVING SQ. FT.