

Country Club Estates

BAILEY [with Study]

Approx. 2,424 Sq. Ft. • 3 Bedrooms • 2.5 Bathrooms • Study • 2-Car Garage



TRADITIONAL



MEDITERRANEAN II



CRAFTSMAN

©2021 Landsea Homes US Corporation. LANDSEA® and LIVE IN YOUR ELEMENT® are federally registered trademarks of Landsea or its licensors. Plans, pricing, product information, square footage, amenities and community/building information are subject to change without notice or obligation. Photographs, renderings, virtual tours and floor plans are for representational purposes only and may not reflect the exact features or dimensions of your home. Models shown do not reflect racial or other preference. Homes shown do not represent actual homesites. Square footages are approximate. Some features and options shown may not be offered in your community/building. Please see the actual purchase agreement for additional information, disclosures and disclaimers relating to your home and its features. All rights reserved and strictly enforced. This is not an offering where prohibited by law. No information contained herein shall be deemed to constitute a representation or warranty of any kind. Please consult a Landsea Homes sales representative for details. Mercedes Premier Realty CQ1040509. 🏠

LANDSEA
HOMES
Live in your element®

Country Club Estates

BAILEY [with Study]

Approx. 2,424 Sq. Ft. • 3 Bedrooms • 2.5 Bathrooms • Study • 2-Car Garage



WEST INDIES



FRENCH COUNTRY

©2021 Landsea Homes US Corporation. LANDSEA® and LIVE IN YOUR ELEMENT® are federally registered trademarks of Landsea or its licensors. Plans, pricing, product information, square footage, amenities and community/building information are subject to change without notice or obligation. Photographs, renderings, virtual tours and floor plans are for representational purposes only and may not reflect the exact features or dimensions of your home. Models shown do not reflect racial or other preference. Homes shown do not represent actual homesites. Square footages are approximate. Some features and options shown may not be offered in your community/building. Please see the actual purchase agreement for additional information, disclosures and disclaimers relating to your home and its features. All rights reserved and strictly enforced. This is not an offering where prohibited by law. No information contained herein shall be deemed to constitute a representation or warranty of any kind. Please consult a Landsea Homes sales representative for details. Mercedes Premier Realty CQ1040509. 🏠

LANDSEA
HOMES
Live in your element®

Country Club Estates

BAILEY [with Study]

Approx. 2,424 Sq. Ft. • 3 Bedrooms • 2.5 Bathrooms • Study • 2-Car Garage



FRENCH COUNTRY II



CONTEMPORARY



COASTAL

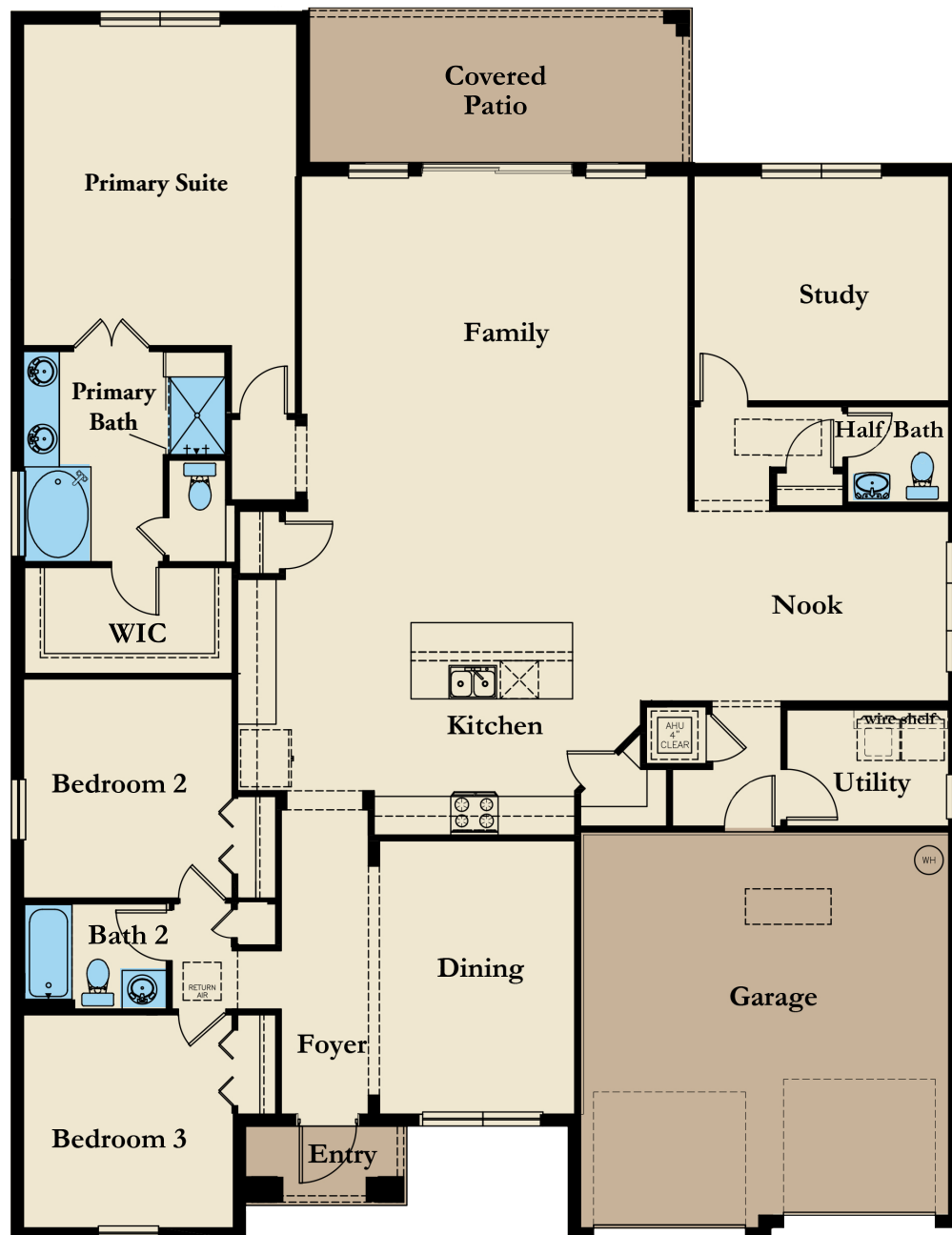
©2021 Landsea Homes US Corporation. LANDSEA® and LIVE IN YOUR ELEMENT® are federally registered trademarks of Landsea or its licensors. Plans, pricing, product information, square footage, amenities and community/building information are subject to change without notice or obligation. Photographs, renderings, virtual tours and floor plans are for representational purposes only and may not reflect the exact features or dimensions of your home. Models shown do not reflect racial or other preference. Homes shown do not represent actual homesites. Square footages are approximate. Some features and options shown may not be offered in your community/building. Please see the actual purchase agreement for additional information, disclosures and disclaimers relating to your home and its features. All rights reserved and strictly enforced. This is not an offering where prohibited by law. No information contained herein shall be deemed to constitute a representation or warranty of any kind. Please consult a Landsea Homes sales representative for details. Mercedes Premier Realty CQ1040509. 🏠

LANDSEA
HOMES
Live in your element®

Country Club Estates

BAILEY [with Study]

Approx. 2,424 Sq. Ft. • 3 Bedrooms • 2.5 Bathrooms • Study • 2-Car Garage

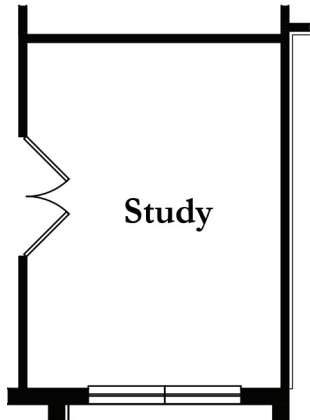


Country Club Estates

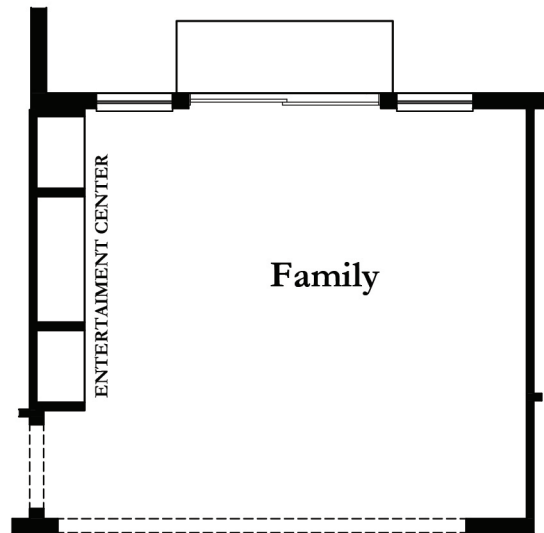
BAILEY [with Study]

Approx. 2,424 Sq. Ft. • 3 Bedrooms • 2.5 Bathrooms • Study • 2-Car Garage

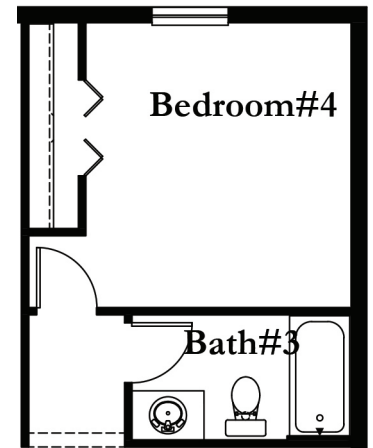
OPTIONAL FEATURES



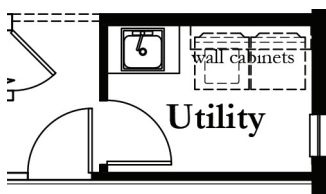
OPTIONAL STUDY ILO DINING



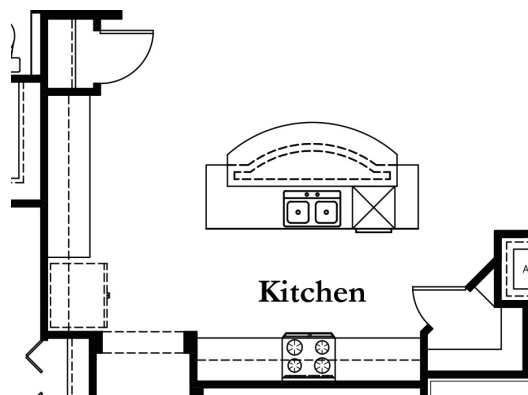
OPTIONAL FAMILY ROOM
ENTERTAINMENT CENTER



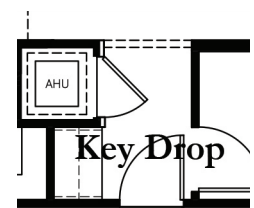
OPTIONAL BEDROOM 4
AND BATH 3 ILO STUDY



OPTIONAL DELUXE UTILITY



OPTIONAL KITCHEN ISLAND



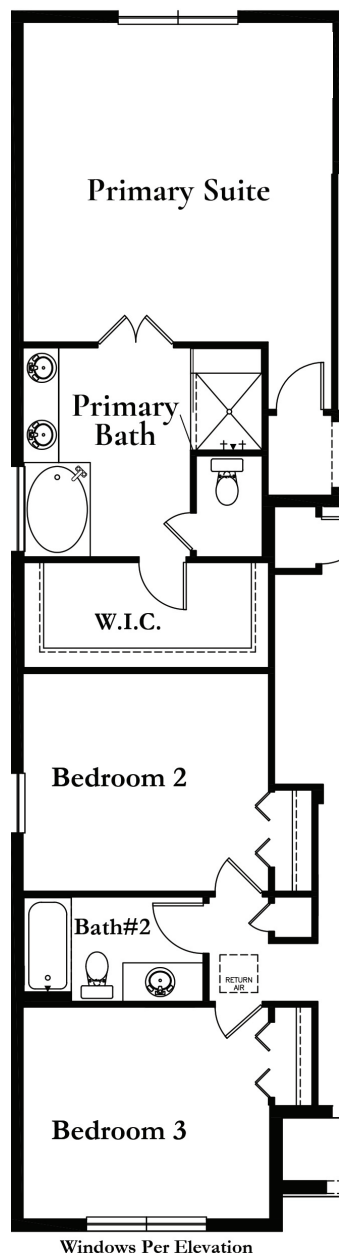
OPTIONAL CABINETS
AT KEY DROP

Country Club Estates

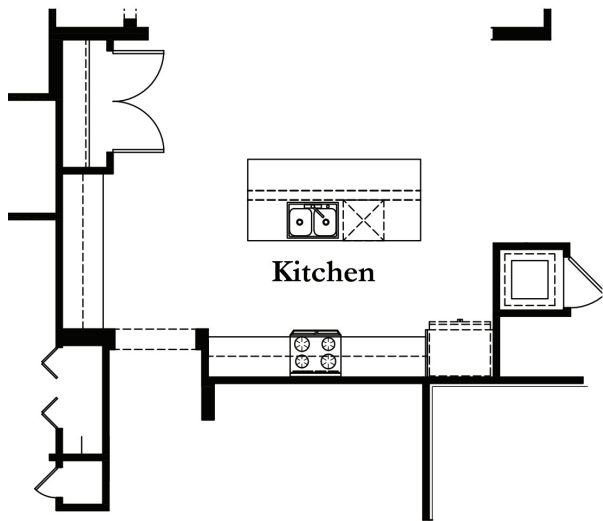
BAILEY [with Study]

Approx. 2,424 Sq. Ft. • 3 Bedrooms • 2.5 Bathrooms • Study • 2-Car Garage

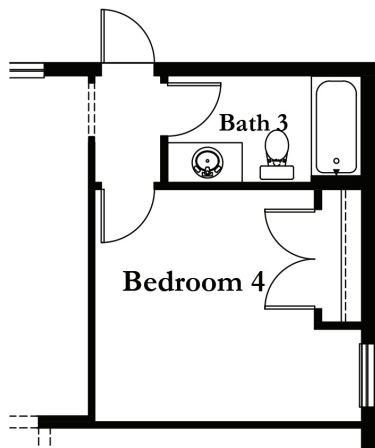
OPTIONAL FEATURES



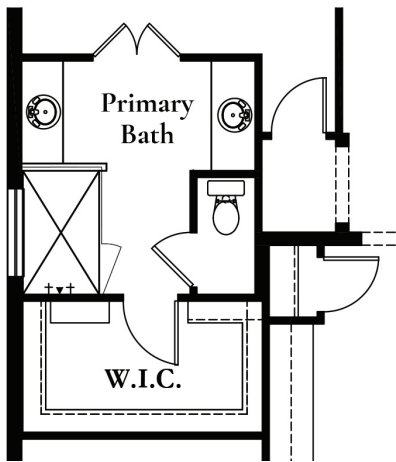
OPTIONAL 2'-0" SIDE EXTENSION
*ADDS 129 LIVING SQ. FT.



OPTIONAL KITCHEN LAYOUT



OPTIONAL BEDROOM 4
AND POOL BATH
*ONLY AVAILABLE WITH
OPTIONAL FULL COVERED PORCHES



OPTIONAL PRIMARY
BATH LAYOUT

Country Club Estates

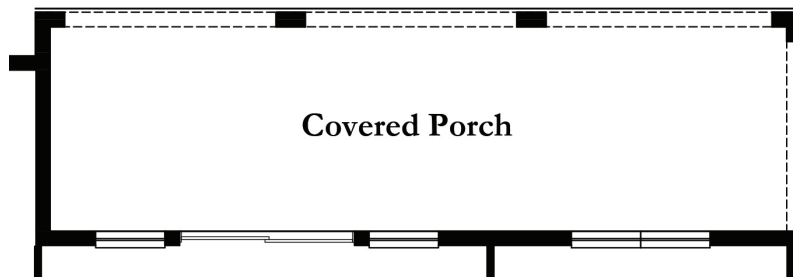
BAILEY [with Study]

Approx. 2,424 Sq. Ft. • 3 Bedrooms • 2.5 Bathrooms • Study • 2-Car Garage

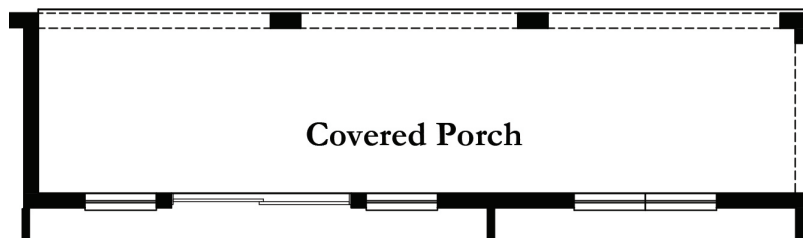
OPTIONAL FEATURES



OPTIONAL 20'-0" X 8'-0"
COVERED PORCH



OPTIONAL 34'-4" X 10'-0"
COVERED PORCH



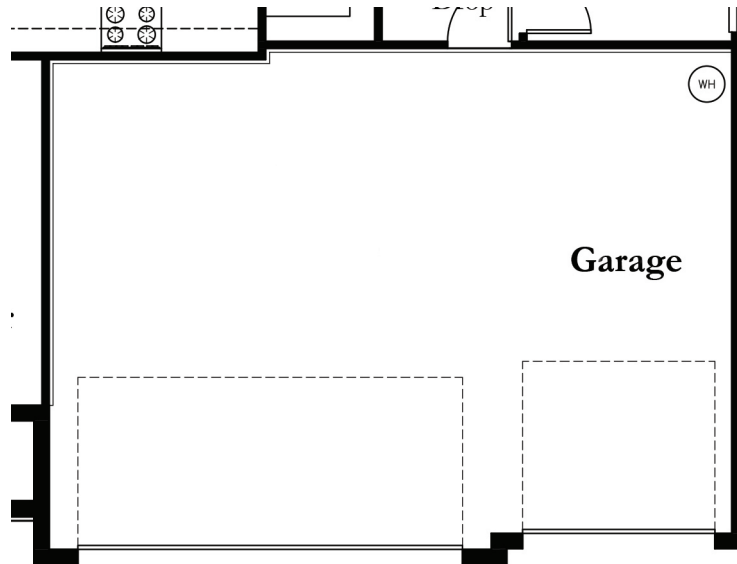
OPTIONAL 34'-4" X 8'-0"
COVERED PORCH

Country Club Estates

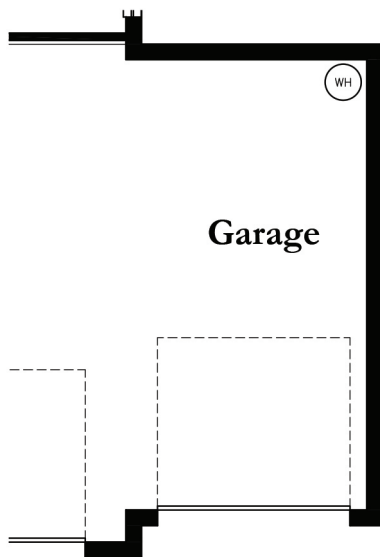
BAILEY [with Study]

Approx. 2,424 Sq. Ft. • 3 Bedrooms • 2.5 Bathrooms • Study • 2-Car Garage

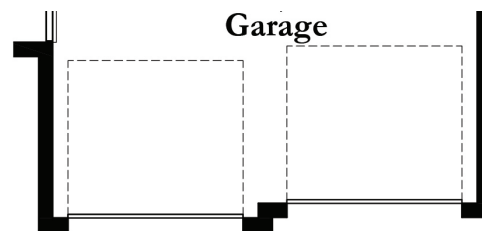
OPTIONAL FEATURES



OPTIONAL INSET 3 CAR GARAGE ILO DINING
* ~154 LIVING SQ. FT.



OPTIONAL 3 CAR GARAGE



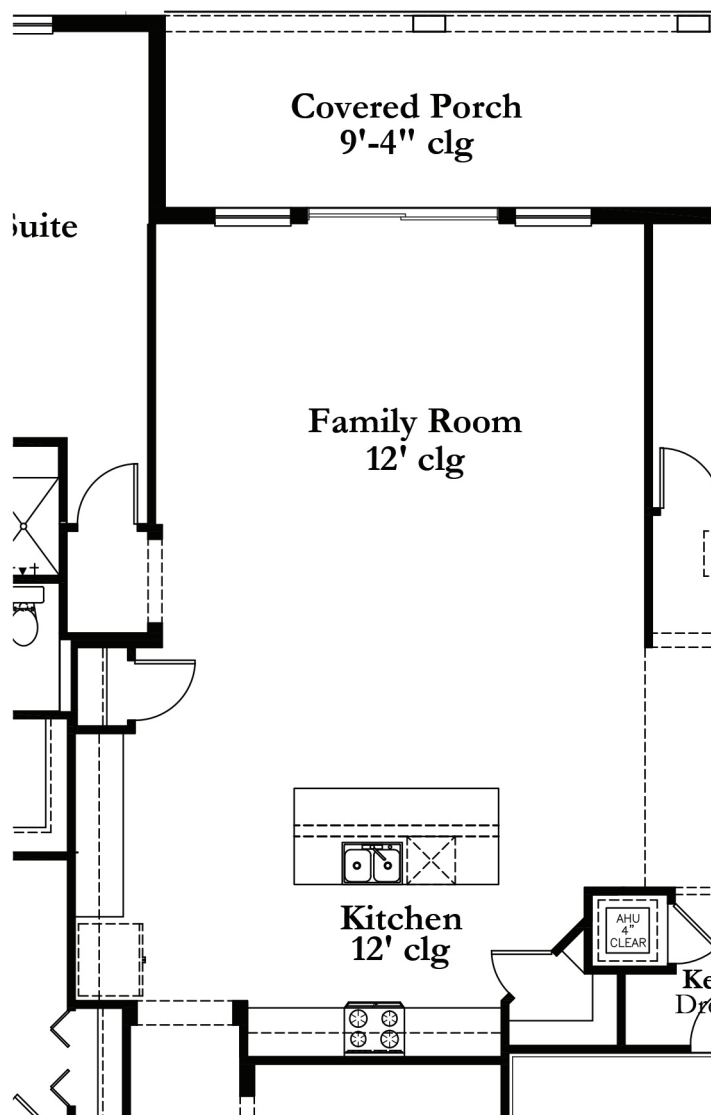
OPTIONAL 2' GARAGE EXTENSION

Country Club Estates

BAILEY [with Study]

Approx. 2,424 Sq. Ft. • 3 Bedrooms • 2.5 Bathrooms • Study • 2-Car Garage

OPTIONAL FEATURES



OPTIONAL 12' CEILING POP-UP AT LIVING AREA
* ONLY AVAILABLE WITH OPTIONAL FULL COVERED PORCH