

St. John's Preserve

AMBER II Approx. 1,804 Sq. Ft. • 3 Bedrooms • 2 Bathrooms • 2-Car Garage



TRADITIONAL



MEDITERRANEAN



FRENCH COUNTRY



CRAFTSMAN

©2021 Landsea Homes US Corporation. LANDSEA® and LIVE IN YOUR ELEMENT® are federally registered trademarks of Landsea or its licensors. Plans, pricing, product information, square footage, amenities and community/building information are subject to change without notice or obligation. Photographs, renderings, virtual tours and floor plans are for representational purposes only and may not reflect the exact features or dimensions of your home. Models shown do not reflect racial or other preference. Homes shown do not represent actual homesites. Square footages are approximate. Some features and options shown may not be offered in your community/building. Please see the actual purchase agreement for additional information, disclosures and disclaimers relating to your home and its features. All rights reserved and strictly enforced. This is not an offering where prohibited by law. No information contained herein shall be deemed to constitute a representation or warranty of any kind. Please consult a Landsea Homes sales representative for details. Mercedes Premier Realty CQ1040509. 🏠

LANDSEA
HOMES
Live in your element®

St. John's Preserve

AMBER II Approx. 1,804 Sq. Ft. • 3 Bedrooms • 2 Bathrooms • 2-Car Garage



TRANSITIONAL



COASTAL



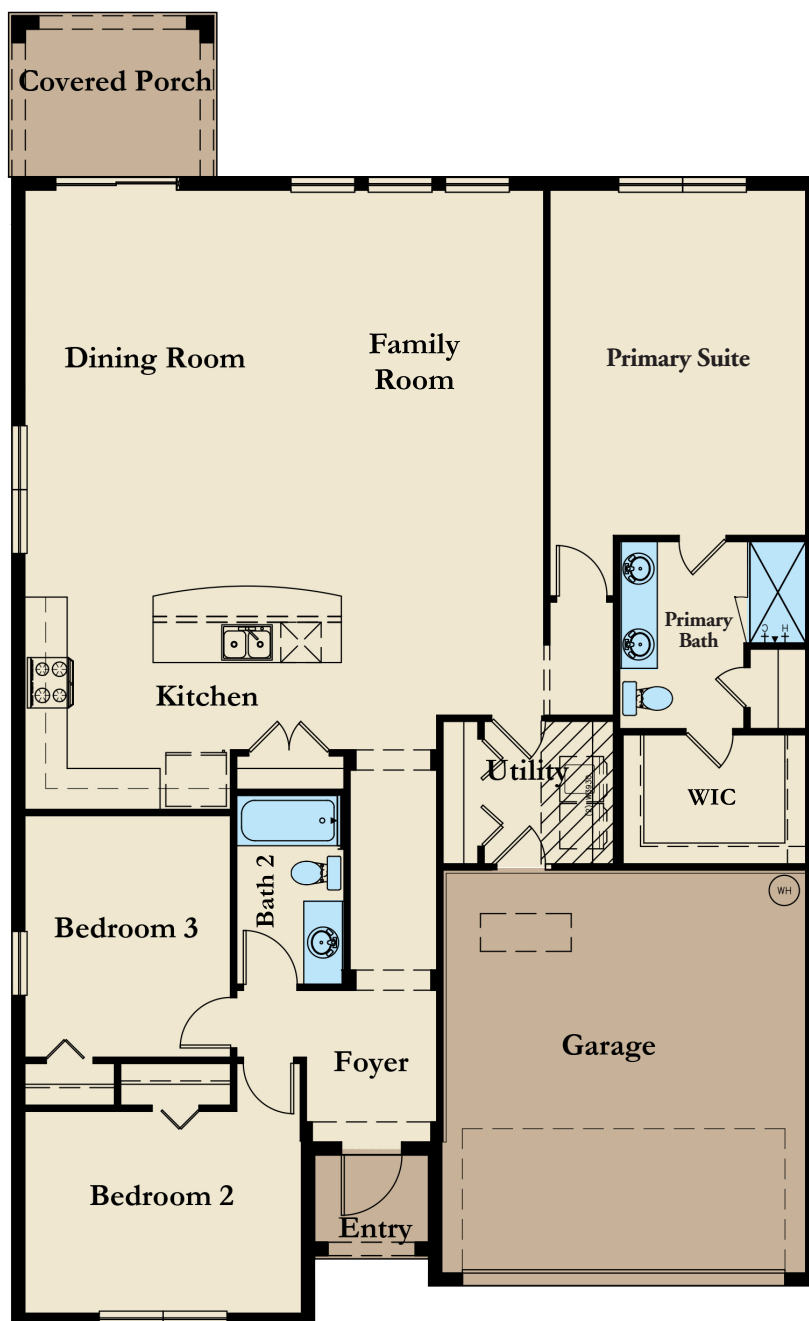
MODERN



CONTEMPORARY

St. John's Preserve

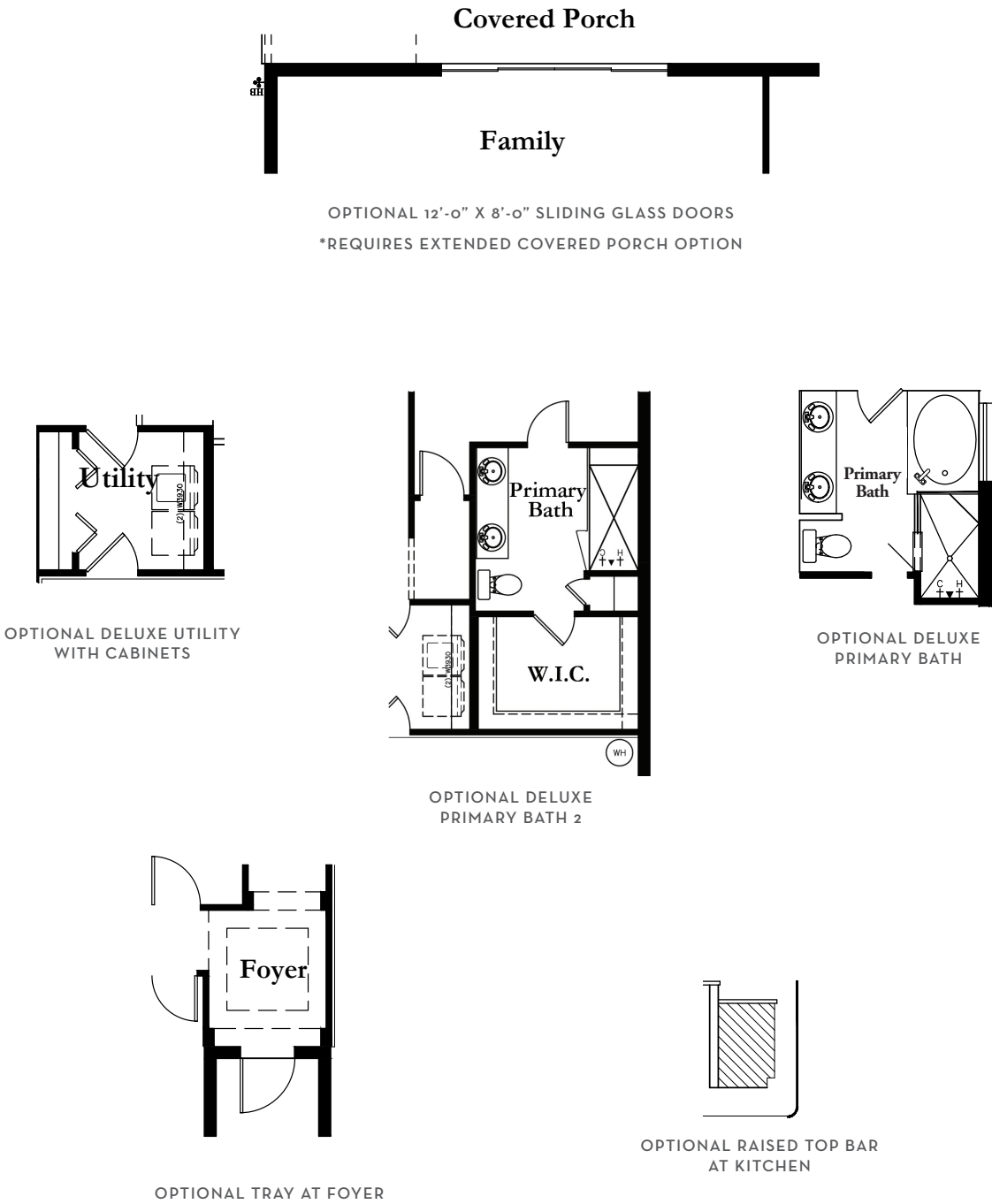
AMBER II Approx. 1,804 Sq. Ft. • 3 Bedrooms • 2 Bathrooms • 2-Car Garage



St. John's Preserve

AMBER II Approx. 1,804 Sq. Ft. • 3 Bedrooms • 2 Bathrooms • 2-Car Garage

OPTIONAL FEATURES

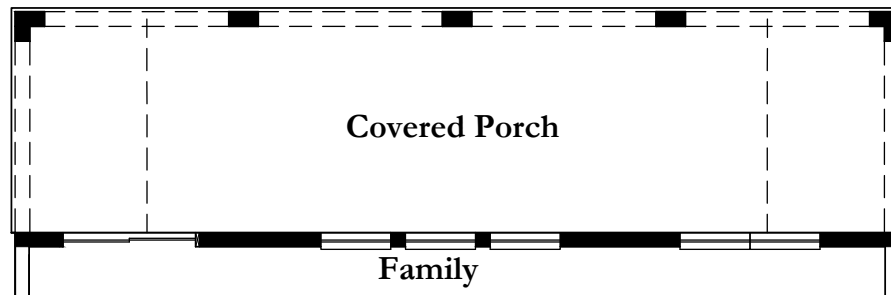


©2021 Landsea Homes US Corporation. LANDSEA® and LIVE IN YOUR ELEMENT® are federally registered trademarks of Landsea or its licensors. Plans, pricing, product information, square footage, amenities and community/building information are subject to change without notice or obligation. Photographs, renderings, virtual tours and floor plans are for representational purposes only and may not reflect the exact features or dimensions of your home. Models shown do not reflect racial or other preference. Homes shown do not represent actual homesites. Square footages are approximate. Some features and options shown may not be offered in your community/building. Please see the actual purchase agreement for additional information, disclosures and disclaimers relating to your home and its features. All rights reserved and strictly enforced. This is not an offering where prohibited by law. No information contained herein shall be deemed to constitute a representation or warranty of any kind. Please consult a Landsea Homes sales representative for details. Mercedes Premier Realty CQ1040509. 🏠

St. John's Preserve

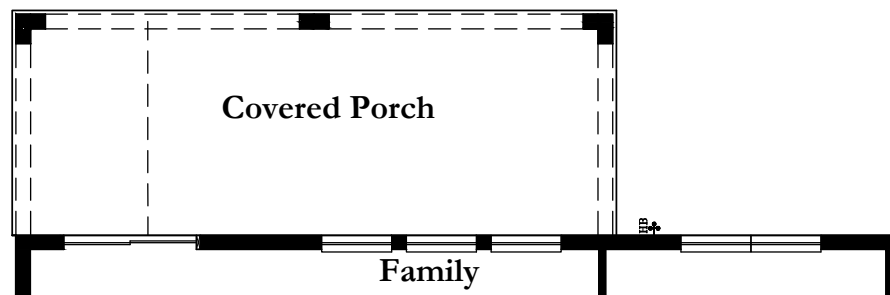
AMBER II Approx. 1,804 Sq. Ft. • 3 Bedrooms • 2 Bathrooms • 2-Car Garage

OPTIONAL FEATURES



OPTIONAL 40'-0" X 10'-0" COVERED PORCH

*ADDS 400 SQ. FT.



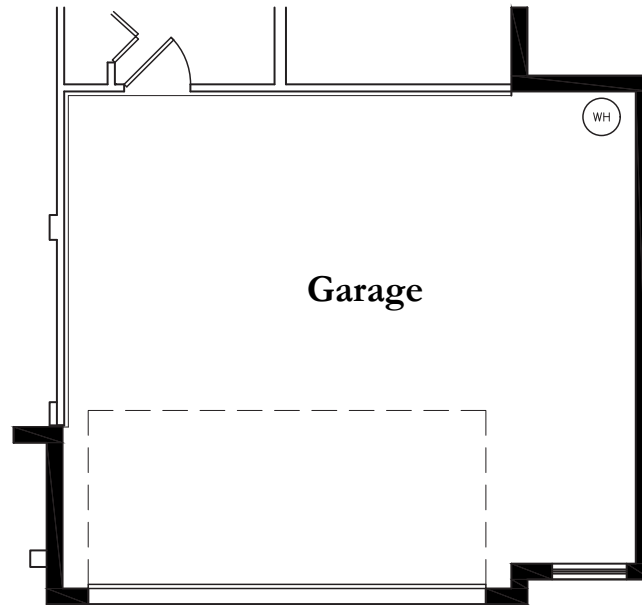
OPTIONAL 27'-0" X 10'-0" COVERED PORCH

*ADDS 270 SQ. FT.

St. John's Preserve

AMBER II Approx. 1,804 Sq. Ft. • 3 Bedrooms • 2 Bathrooms • 2-Car Garage

OPTIONAL FEATURES



OPTIONAL 5' GARAGE EXTENSION

*ADDS 101 SQ. FT.



OPTIONAL 2' GARAGE EXTENSION

*ADDS 39 SQ. FT.