

# SKYE RIDGE

by Landsea Homes at Victory

# Skye Ridge at Victory

## FACT SHEET

### GENERAL INFORMATION

20975 W. Pasadena Ave., Buckeye, AZ 85396  
At the corner of Verrado Way and Indian School Road  
(623) 232-8436

Sales office is open daily.  
Summer Hours: 10am – 6pm daily; Monday, 1pm – 6pm  
Winter Hours: 10am – 5pm daily; Monday, 1pm – 5pm

Total Number of Homes: 86

### HOA DUES

Residents will be part of the Skye Ridge Community HOA and will pay monthly dues for the maintenance of amenities and common areas, including landscaping and parks. Monthly dues are approximately \$258 at build-out.

### LENDING PARTNER

**LANDSEA<sup>®</sup>**  
**MORTGAGE**

Powered by NFM Lending

(888) 577-5977

getapproved@landseamortgage.com

### AMENITIES

Victory Club	Hiking and Biking Trails
Pool	Event Lawn
Spa	Sports Pavilion
Fitness Center	Neighborhood Parks
Championship Golf Courses	Restaurants

### SCHOOLS

Litchfield Elementary School District

**Elementary School (K – 5)**

Verrado Elementary School

**Middle School (6 – 8)**

Verrado Middle School

Agua Fria Union High School District

**High School (9 – 12)**

Verrado High School

# Unique Features


Active Adult  
Community

Modern  
Architecture

LiveFlex<sup>®</sup> Options

High Performance  
Homes

20975 W. Pasadena Ave., Buckeye, AZ 85396 • (623) 232-8436

© 2024 Landsea Homes US Corporation. LANDSEA®, LIVE IN YOUR ELEMENT® and LIVEFLEX® are federally registered trademarks of Landsea. Bedroom(s) marked with LiveFlex® are eligible for the LiveFlex optional program for an additional cost. You may select one (1) bedroom marked with LiveFlex for the program and pick your preferred package of options for that room. Plans, terms, pricing, square footages, product information, features, promotions, LiveFlex® options, amenities and community/neighborhood information are subject to change without notice or obligation. Square footages are approximate. Renderings are artist's conceptions. Homes shown may not reflect actual homesites. Site map is for illustrative purposes only and not to scale. Please see the actual purchase agreement for additional information, disclosures and disclaimers relating to your home, its features and your LiveFlex options. Individual energy costs and savings may vary. Landsea Homes does not guarantee any specific level of energy costs or savings. All rights reserved and strictly enforced. This is not an offering where prohibited by law. No information contained herein shall be deemed to constitute a representation or warranty of any kind. Please consult a Landsea Homes sales representative for details. Arizona Broker #BR531087000. LIC #C0688244000. ROC #257091. ROC #295355. ROC #324050. ROC #275051.10/23. Landsea Mortgage is a division of NFM, Inc. dba NFM Lending, NFM NMLS #2893. This is a co-marketing piece with Landsea Homes US Corporation ("Seller"). Landsea Mortgage has a financial relationship with Landsea Home Loans, and you may choose not to use Landsea Mortgage in connection with the purchase of a Landsea home. You are entitled to shop around for the best lender/real estate company for you. Landsea Mortgage is an equal housing lender. For full agency and state licensing information, please visit [www.nfmmlending.com/licensing](http://www.nfmmlending.com/licensing). NFM, Inc.'s NMLS #2893 ([www.nmlsconsumeraccess.org](http://www.nmlsconsumeraccess.org)). NFM, Inc is not affiliated with, or an agent or division of, a governmental agency or depository institution. Copyright © 2024. 

**LANDSEA<sup>®</sup>**  
**HOMES**  
*Live in your element<sup>®</sup>*

# Skye Ridge at Victory

## HIGH PERFORMANCE HOMES

Enhancing your home's comfort and convenience while saving money and preserving natural resources.

- Home Automation Supported by Apple® Technology
- Energy Savings
- Sustainability
- Healthy Lifestyle Features



See HPH brochure for details

## REFINED INTERIORS

- 9' First-Floor Ceiling Height
- 18" x 18" Ceramic Tile at Entry, Kitchen, All Bathrooms and Laundry Room
- 4" Baseboards Throughout
- Ceiling Fan Pre-Wire at Great Room and Primary Bedroom
- Two-Panel Interior Doors
- Kwikset® Door Hardware with Entry Deadbolt and Smart Lock
- Cat 6 Wiring at Great Room and Primary Bedroom
- Structured Wiring Enclosure
- Doorbell Camera Pre-Wire
- Three (3) Wireless Smart Switches
- Wireless Access Point
- Apple® HomePod mini®

## KITCHENS FOR LIVING

- Stained-Wood Cabinets with 36" Uppers
- Granite Slab Countertops
- Kitchen Island
- Stainless Steel Kitchen Sink
- Chrome Pullout Kitchen Faucet
- Samsung® Stainless Steel Energy-Saving Appliances: 30" Electric Range, Microwave/Hood Combo and Dishwasher
- One (1) USB Combo Receptacle

## LUXURIOUS BATHROOMS

- Spacious Walk-In Closet at Primary Suite
- Double Sinks at Primary Bathroom
- Cultured Marble Countertops
- Private Water Closet
- Elongated Toilet
- Frameless Mirrored Medicine Cabinet

## ENERGY-SAVING FEATURES

- ENERGY STAR® Certified Homes
- Energy-Saving LED Lighting
- ENERGY STAR® Rated Kitchen Appliances
- Honeywell® Wi-Fi Digital Thermostats
- R-38 Ceiling/R-15 Exterior Wall Insulation
- Dual-Pane Low-E Windows with Vinyl Frames
- High-Efficiency Air Conditioner
- EPA WaterSense® Low-Flow Plumbing Fixtures
- Building Performance Sealant at Windows, Doors and Exterior Walls

## QUALITY CONSTRUCTION FEATURES

- REME HALO® Whole Home Air Purifier
- Tankless Hot Water Heater
- Post-Tension Slab Foundation
- Radiant Barrier Roof Sheathing
- Soft Water and RO Loop Pre-Plumbed
- Fully Finished Garage
- Wi-Fi Garage Door Opener with Two (2) Remotes
- Garage Coach Lights
- Sherwin-Williams® Low-VOC Paint
- Front Yard Desert Landscaping with Automatic Watering System

## ADDITIONAL OPTIONS

- LiveFlex® Option Package
- Gourmet Kitchen
- Primary Bathroom Configurations
- Design Center Upgrades: Appliances, Cabinetry, Countertops, Door Hardware, Flooring, Lighting, Window Coverings and More

20975 W. Pasadena Ave., Buckeye, AZ 85396 • (623) 232-8436

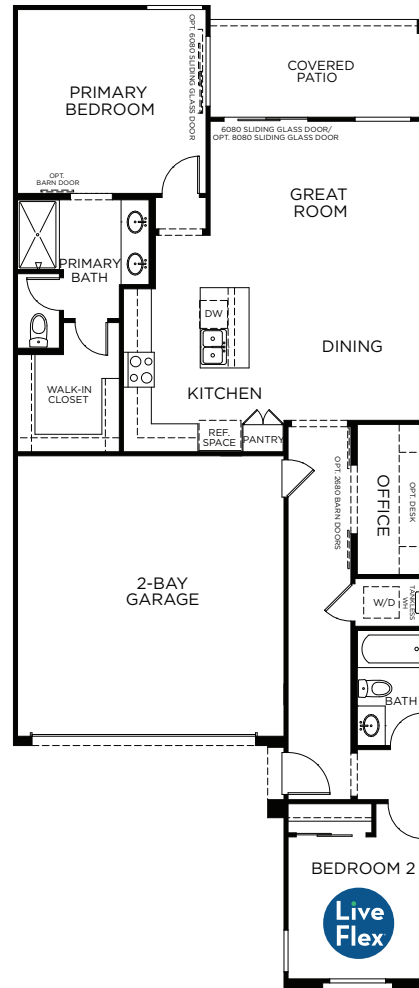
© 2024 Landsea Homes US Corporation. LANDSEA®, LIVE IN YOUR ELEMENT® and LIVEFLEX® are federally registered trademarks of Landsea. Bedroom(s) marked with LiveFlex® are eligible for the LiveFlex optional program for an additional cost. You may select one (1) bedroom marked with LiveFlex for the program and pick your preferred package of options for that room. Plans, terms, pricing, square footages, product information, features, promotions, LiveFlex® options, amenities and community/neighborhood information are subject to change without notice or obligation. Square footages are approximate. Renderings are artist's conceptions. Homes shown may not reflect actual homesites. Site map is for illustrative purposes only and not to scale. Please see the actual purchase agreement for additional information, disclosures and disclaimers relating to your home, its features and your LiveFlex options. Individual energy costs and savings may vary. Landsea Homes does not guarantee any specific level of energy costs or savings. All rights reserved and strictly enforced. This is not an offering where prohibited by law. No information contained herein shall be deemed to constitute a representation or warranty of any kind. Please consult a Landsea Homes sales representative for details. Arizona Broker #BR531087000. LIC #C0688244000. ROC #257091. ROC #295355. ROC #324050. ROC #275051.10/23. Landsea Mortgage is a division of NFM, Inc. dba NFM Lending, NFM NMLS #2893. This is a co-marketing piece with Landsea Homes US Corporation ("Seller"). Landsea Mortgage has a financial relationship with Landsea Home Loans, and you may choose not to use Landsea Mortgage in connection with the purchase of a Landsea home. You are entitled to shop around for the best lender/real estate company for you. Landsea Mortgage is an equal housing lender. For full agency and state licensing information, please visit [www.nfmlending.com/licensing](http://www.nfmlending.com/licensing). NFM, Inc.'s NMLS #2893 ([www.nmlsconsumeraccess.org](http://www.nmlsconsumeraccess.org)). NFM, Inc is not affiliated with, or an agent or division of, a governmental agency or depository institution. Copyright © 2024.

**LANDSEA**<sup>®</sup>  
**HOMES**<sup>®</sup>  
*Live in your element*<sup>®</sup>

# Skye Ridge at Victory

## AURORA

1,236 Square Feet • 2 Bedrooms • 2 Baths • 2-Car Garage



## PRELIMINARY

20975 W. Pasadena Ave., Buckeye, AZ 85396 • (623) 232-8436

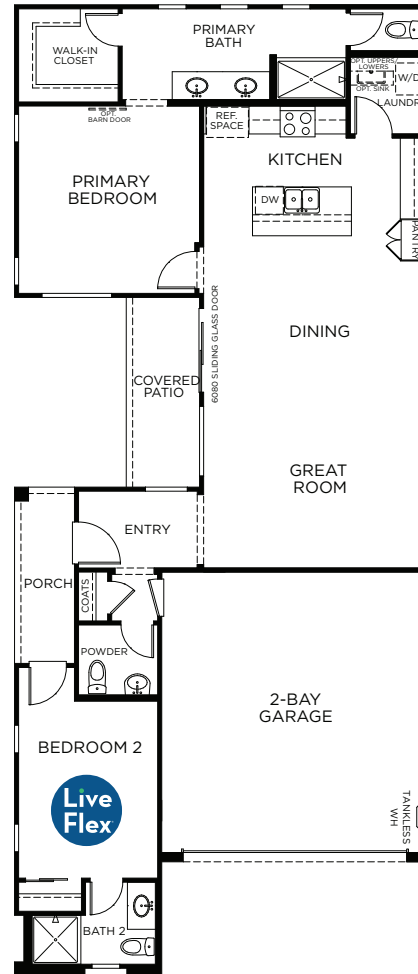
© 2024 Landsea Homes US Corporation. LANDSEA®, LIVE IN YOUR ELEMENT® and LIVEFLEX® are federally registered trademarks of Landsea. Bedroom(s) marked with LiveFlex® are eligible for the LiveFlex optional program for an additional cost. You may select one (1) bedroom marked with LiveFlex for the program and pick your preferred package of options for that room. Plans, terms, pricing, square footages, product information, features, promotions, LiveFlex® options, amenities and community/neighborhood information are subject to change without notice or obligation. Square footages are approximate. Renderings are artist's conceptions. Homes shown may not reflect actual homesites. Site map is for illustrative purposes only and not to scale. Please see the actual purchase agreement for additional information, disclosures and disclaimers relating to your home, its features and your LiveFlex options. Individual energy costs and savings may vary. Landsea Homes does not guarantee any specific level of energy costs or savings. All rights reserved and strictly enforced. This is not an offering where prohibited by law. No information contained herein shall be deemed to constitute a representation or warranty of any kind. Please consult a Landsea Homes sales representative for details. Arizona Broker #BR531087000. LIC #C0688244000. ROC #257091. ROC #295355. ROC #324050. ROC #275051.10/23. Landsea Mortgage is a division of NFM, Inc. dba NFM Lending, NFM NMLS #2893. This is a co-marketing piece with Landsea Homes US Corporation ("Seller"). Landsea Mortgage has a financial relationship with Landsea Home Loans, and you may choose not to use Landsea Mortgage in connection with the purchase of a Landsea home. You are entitled to shop around for the best lender/real estate company for you. Landsea Mortgage is an equal housing lender. For full agency and state licensing information, please visit [www.nfmlending.com/licensing](http://www.nfmlending.com/licensing). NFM, Inc.'s NMLS #2893 ([www.nmlsconsumeraccess.org](http://www.nmlsconsumeraccess.org)). NFM, Inc is not affiliated with, or an agent or division of, a governmental agency or depository institution. Copyright © 2024.

**LANDSEA**<sup>®</sup>  
**HOMES**  
*Live in your element*<sup>®</sup>

# Skye Ridge at Victory

## ECLIPSE

1,278 Square Feet • 2 Bedrooms • 2.5 Baths • 2-Car Garage



PRELIMINARY

20975 W. Pasadena Ave., Buckeye, AZ 85396 • (623) 232-8436

© 2024 Landsea Homes US Corporation. LANDSEA®, LIVE IN YOUR ELEMENT® and LIVEFLEX® are federally registered trademarks of Landsea. Bedroom(s) marked with LiveFlex® are eligible for the LiveFlex optional program for an additional cost. You may select one (1) bedroom marked with LiveFlex for the program and pick your preferred package of options for that room. Plans, terms, pricing, square footages, product information, features, promotions, LiveFlex® options, amenities and community/neighborhood information are subject to change without notice or obligation. Square footages are approximate. Renderings are artist's conceptions. Homes shown may not reflect actual homesites. Site map is for illustrative purposes only and not to scale. Please see the actual purchase agreement for additional information, disclosures and disclaimers relating to your home, its features and your LiveFlex options. Individual energy costs and savings may vary. Landsea Homes does not guarantee any specific level of energy costs or savings. All rights reserved and strictly enforced. This is not an offering where prohibited by law. No information contained herein shall be deemed to constitute a representation or warranty of any kind. Please consult a Landsea Homes sales representative for details. Arizona Broker #BR531087000. LIC #C0688244000. ROC #257091. ROC #295355. ROC #324050. ROC #275051.10/23. Landsea Mortgage is a division of NFM, Inc. dba NFM Lending, NFM NMLS #2893. This is a co-marketing piece with Landsea Homes US Corporation ("Seller"). Landsea Mortgage has a financial relationship with Landsea Home Loans, and you may choose not to use Landsea Mortgage in connection with the purchase of a Landsea home. You are entitled to shop around for the best lender/real estate company for you. Landsea Mortgage is an equal housing lender. For full agency and state licensing information, please visit [www.nfmlending.com/licensing](http://www.nfmlending.com/licensing). NFM, Inc.'s NMLS #2893 ([www.nmlsconsumeraccess.org](http://www.nmlsconsumeraccess.org)). NFM, Inc is not affiliated with, or an agent or division of, a governmental agency or depository institution. Copyright © 2024.

**LANDSEA**<sup>®</sup>  
**HOMES**  
*Live in your element*<sup>®</sup>

# Skye Ridge at Victory



ECLIPSE

AURORA

SPANISH/MISSION



ECLIPSE

AURORA

BUNGALOW/CRAFTSMAN




ECLIPSE

AURORA

DESERT PRAIRIE

20975 W. Pasadena Ave., Buckeye, AZ 85396 • (623) 232-8436

© 2024 Landsea Homes US Corporation. LANDSEA®, LIVE IN YOUR ELEMENT® and LIVEFLEX® are federally registered trademarks of Landsea. Bedroom(s) marked with LiveFlex® are eligible for the LiveFlex optional program for an additional cost. You may select one (1) bedroom marked with LiveFlex for the program and pick your preferred package of options for that room. Plans, terms, pricing, square footages, product information, features, promotions, LiveFlex® options, amenities and community/neighborhood information are subject to change without notice or obligation. Square footages are approximate. Renderings are artist's conceptions. Homes shown may not reflect actual homesites. Site map is for illustrative purposes only and not to scale. Please see the actual purchase agreement for additional information, disclosures and disclaimers relating to your home, its features and your LiveFlex options. Individual energy costs and savings may vary. Landsea Homes does not guarantee any specific level of energy costs or savings. All rights reserved and strictly enforced. This is not an offering where prohibited by law. No information contained herein shall be deemed to constitute a representation or warranty of any kind. Please consult a Landsea Homes sales representative for details. Arizona Broker #BR531087000. LIC #C0688244000. ROC #257091. ROC #295355. ROC #324050. ROC #275051.10/23. Landsea Mortgage is a division of NFM, Inc. dba NFM Lending, NFM NMLS #2893. This is a co-marketing piece with Landsea Homes US Corporation ("Seller"). Landsea Mortgage has a financial relationship with Landsea Home Loans, and you may choose not to use Landsea Mortgage in connection with the purchase of a Landsea home. You are entitled to shop around for the best lender/real estate company for you. Landsea Mortgage is an equal housing lender. For full agency and state licensing information, please visit [www.nfmmlending.com/licensing](http://www.nfmmlending.com/licensing). NFM, Inc.'s NMLS #2893 ([www.nmlsconsumeraccess.org](http://www.nmlsconsumeraccess.org)). NFM, Inc is not affiliated with, or an agent or division of, a governmental agency or depository institution. Copyright © 2024. 


**LANDSEA**<sup>®</sup>  
**HOMES**  
*Live in your element*<sup>®</sup>

# SKYE RIDGE

by Landsea Homes at Victory



20975 W. Pasadena Ave., Buckeye, AZ 85396 • (623) 232-8436

© 2024 Landsea Homes US Corporation. LANDSEA®, LIVE IN YOUR ELEMENT® and LIVEFLEX® are federally registered trademarks of Landsea. Bedroom(s) marked with LiveFlex® are eligible for the LiveFlex optional program for an additional cost. You may select one (1) bedroom marked with LiveFlex for the program and pick your preferred package of options for that room. Plans, terms, pricing, square footages, product information, features, promotions, LiveFlex® options, amenities and community/neighborhood information are subject to change without notice or obligation. Square footages are approximate. Renderings are artist's conceptions. Homes shown may not reflect actual homesites. Site map is for illustrative purposes only and not to scale. Please see the actual purchase agreement for additional information, disclosures and disclaimers relating to your home, its features and your LiveFlex options. Individual energy costs and savings may vary. Landsea Homes does not guarantee any specific level of energy costs or savings. All rights reserved and strictly enforced. This is not an offering where prohibited by law. No information contained herein shall be deemed to constitute a representation or warranty of any kind. Please consult a Landsea Homes sales representative for details. Arizona Broker #BR531087000. LIC #C0688244000. ROC #257091. ROC #295355. ROC #324050. ROC #275051.10/23. Landsea Mortgage is a division of NFM, Inc. dba NFM Lending, NFM NMLS #2893. This is a co-marketing piece with Landsea Homes US Corporation ("Seller"). Landsea Mortgage has a financial relationship with Landsea Home Loans, and you may choose not to use Landsea Mortgage in connection with the purchase of a Landsea home. You are entitled to shop around for the best lender/real estate company for you. Landsea Mortgage is an equal housing lender. For full agency and state licensing information, please visit [www.nfmlending.com/licensing](http://www.nfmlending.com/licensing). NFM, Inc.'s NMLS #2893 ([www.nmlsconsumeraccess.org](http://www.nmlsconsumeraccess.org)). NFM, Inc is not affiliated with, or an agent or division of, a governmental agency or depository institution. Copyright © 2024. 

**LANDSEA**<sup>®</sup>  
**HOMES**<sup>®</sup>  
*Live in your element*<sup>®</sup>