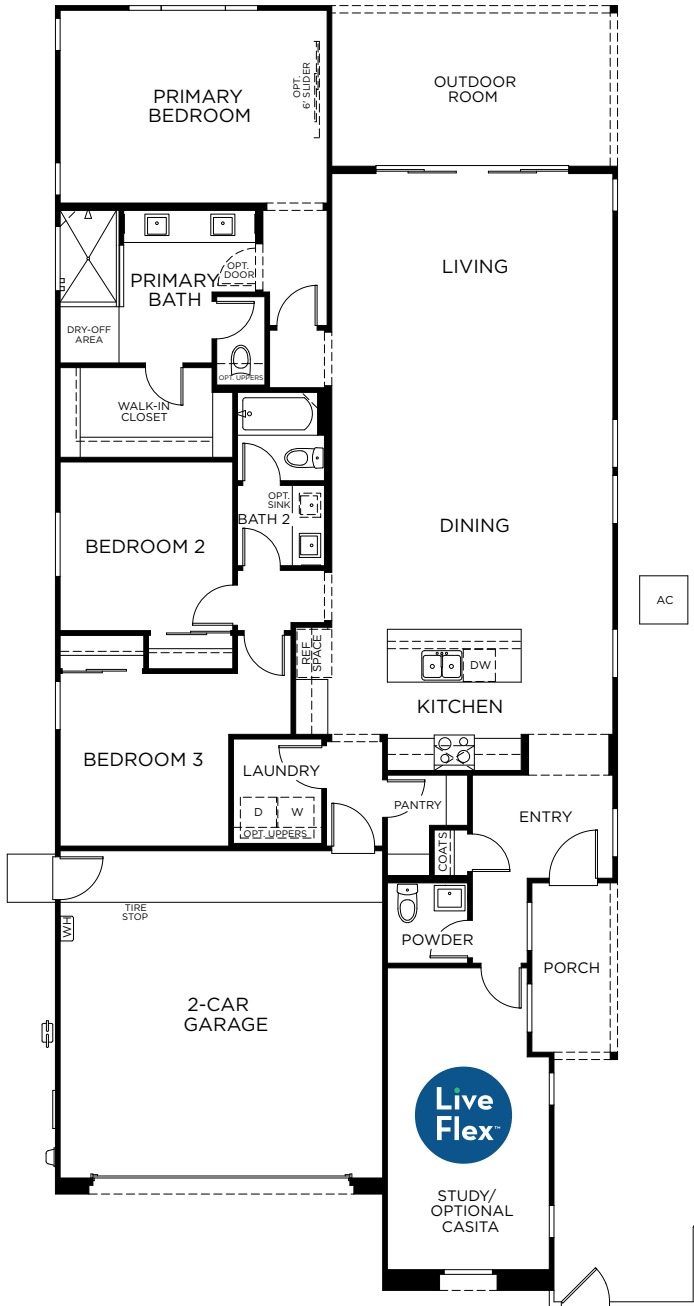


# Farmstead at Harvest

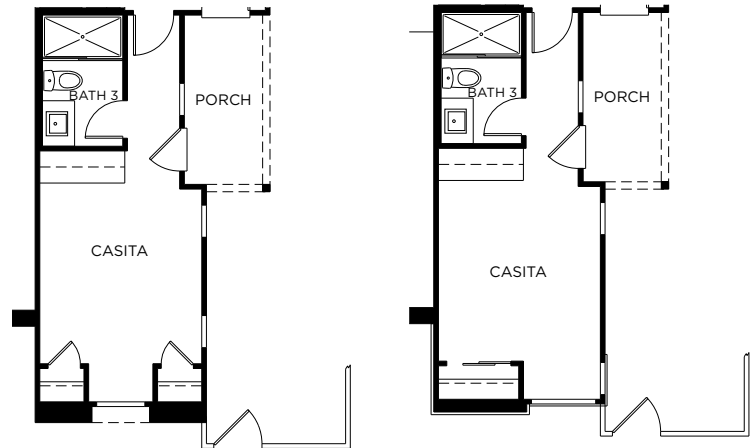
CLEMENTINE

Approx. 1,939 Sq. Ft. • 3 - 4 Bedrooms • 2.5 - 3 Bathrooms • 2-Car Garage

## FIRST FLOOR

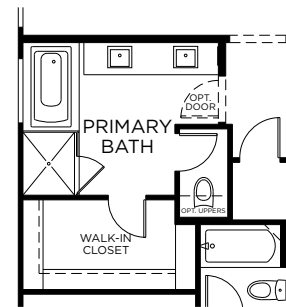


## OPTIONAL FEATURES



OPTIONAL CASITA IN LIEU OF STUDY AT ELEVATIONS A AND B

OPTIONAL CASITA IN LIEU OF STUDY AT ELEVATION C



OPTIONAL TUB AND SHOWER AT MASTER BATH

© 2021 Landsea Homes. LANDSEA® and LIVE IN YOUR ELEMENT® are federally registered trademarks of Landsea. Bedroom(s) marked with LiveFlex™ are eligible for the LiveFlex optional program for an additional cost. You may select one (1) bedroom marked with LiveFlex for the program, and pick your preferred package of options for that room. Plans, pricing, product information, features, LiveFlex options, amenities and community/neighborhood information are subject to change without notice or obligation. Photographs, renderings, virtual tours and floor plans are for representational purposes only and may not reflect the exact features or dimensions of your home or LiveFlex options. Models do not reflect racial or other preferences. Homes shown do not represent actual homesites. Square footages are approximate. LiveFlex program and some features or options shown may not be offered in your community. Please see the actual purchase agreement for additional information, disclosures and disclaimers relating to your home, its features and your LiveFlex options. All rights reserved and strictly enforced. This is not an offering where prohibited by law. No information contained herein shall be deemed to constitute a representation or warranty of any kind. Please consult a Landsea Homes sales representative for details. A & J Companies ROC #257091. Landsea Homes Arizona broker #BR531087000. ROC #C0688244000. 🏠

**LANDSEA**  
HOMES  
*Live in your element®*

# Farmstead at Harvest

CLEMENTINE

Approx. 1,939 Sq. Ft. • 3 – 4 Bedrooms • 2.5 – 3 Bathrooms • 2-Car Garage



ELEVATION A



ELEVATION B



ELEVATION C

© 2021 Landsea Homes. LANDSEA® and LIVE IN YOUR ELEMENT® are federally registered trademarks of Landsea. Bedroom(s) marked with LiveFlex™ are eligible for the LiveFlex optional program for an additional cost. You may select one (1) bedroom marked with LiveFlex for the program, and pick your preferred package of options for that room. Plans, pricing, product information, features, LiveFlex options, amenities and community/neighborhood information are subject to change without notice or obligation. Photographs, renderings, virtual tours and floor plans are for representational purposes only and may not reflect the exact features or dimensions of your home or LiveFlex options. Models do not reflect racial or other preferences. Homes shown do not represent actual homesites. Square footages are approximate. LiveFlex program and some features or options shown may not be offered in your community. Please see the actual purchase agreement for additional information, disclosures and disclaimers relating to your home, its features and your LiveFlex options. All rights reserved and strictly enforced. This is not an offering where prohibited by law. No information contained herein shall be deemed to constitute a representation or warranty of any kind. Please consult a Landsea Homes sales representative for details. A & J Companies ROC #257091. Landsea Homes Arizona broker #BR531087000. ROC #C0688244000. 🏠

**LANDSEA**<sup>®</sup>  
**HOMES**  
*Live in your element*<sup>®</sup>